



## Batteries / batteries / Baterías

Premium AGM Power Sports Battery Application & Specification Guide

Batterie AGM haut de gamme pour sports motorisés guide d'applications et de spécifications

Guía de Aplicaciones y Especificaciones Batería Power Sports AGM Premium



2013



# TABLE OF CONTENTS

How to Use This Guide .....	1
Battery Specification Data .....	1
Battery Safety: Safe Battery Installation, Charging .....	2-3
Battery Applications	
Motorcycles .....	4-7
All Terrain Vehicles .....	8-9
Personal Watercraft .....	10
Snowmobiles .....	11-13
Scooters / Mopeds .....	14
Utility Vehicles .....	15
Recycling .....	Inside Back Cover

**DISCLAIMER STATEMENT:** The instructions are based on sound engineering principles, research, extensive field experience, and technical judgements of industry members, and are subject to change in light of developments in technology, field experience, and incoming fit data. The producer of this catalog disclaims any representation or warranty, express or implied, concerning the data or recommendations contained herein, and in no event shall be liable for any loss or damage claimed to have arisen as a result of the use of data or from following the recommendation set forth in this catalog.

## HOW TO USE THIS GUIDE

**Step 1:** Find the model, CC and year of your vehicle in the **Battery Application Section**.

**Step 2:** Select your battery replacement part number.

CC	MODEL	YEAR	AGM
<b>HONDA (Continued)</b>			
1200cc	GL 1200L Goldwing - Limited	1985	ETX18L(64)
	GL 1200SEI Goldwing - SEI	1986	ETX18L(64)
1100cc	CB1100F Supersport	1983	ETX15L
	CBR1100XX	2003-99	
	CBR1100XX	1998-97	ETX12

**Step 3:** Find details regarding your battery replacement option in the **Battery Specification Section**.






BATTERY TYPE	CAP. AH (10 HR)	DIMENSIONS (in.) L / W / H	DIMENSIONS (mm) L / W / H	ASSEMBLY FIGURE (as per cover polarity)	WEIGHT (lbs.)	WEIGHT (kgs.)	REG. CHARGE CURRENT (Amps)	CCA @ 0°F (-18°C)
<b>PREMIUM AGM ACTIVATED - 12 Volt</b>								
ETX14 (75,77)	12	5 $\frac{1}{4}$ / 3 $\frac{1}{8}$ / 5 $\frac{1}{8}$	150 / 87 / 145	+ -	12.0	5.4	3.0	200
ETX15 (75)	14	5 $\frac{1}{4}$ / 3 $\frac{1}{2}$ / 6 $\frac{1}{8}$	134 / 90 / 166	+ -	11.0	5.0	3.0	190
ETX15L	14	5 $\frac{1}{4}$ / 3 $\frac{1}{2}$ / 6 $\frac{1}{8}$	134 / 90 / 166	- +	11.0	5.0	3.0	190
ETX16 (74, 77)	19	6 $\frac{1}{8}$ / 4 / 6 $\frac{1}{8}$	175 / 100 / 155	+ -	17.0	7.7	4.0	275

## BATTERY SPECIFICATION DATA

BATTERY TYPE	CAP. AH (10 HR)	DIMENSIONS (in.) L / W / H	DIMENSIONS (mm) L / W / H	ASSEMBLY FIGURE (as per cover polarity)	WEIGHT (lbs.)	WEIGHT (kgs.)	REG. CHARGE CURRENT (Amps)	CCA @ 0°F (-18°C)
<b>PREMIUM AGM ACTIVATED - 12 Volt</b>								
ETX9	8	5 $\frac{1}{4}$ / 3 $\frac{1}{8}$ / 4 $\frac{3}{8}$	150 / 87 / 105	+ -	6.3	2.9	1.5	120
ETX12	10	5 $\frac{1}{4}$ / 3 $\frac{1}{8}$ / 5 $\frac{1}{8}$	150 / 87 / 130	+ -	9.4	4.3	2.0	180
ETX14 (130)	12	5 $\frac{1}{4}$ / 3 $\frac{1}{8}$ / 5 $\frac{1}{4}$	150 / 87 / 145	+ -	12.0	5.4	3.0	220
ETX14L (130)	12	5 $\frac{1}{4}$ / 3 $\frac{1}{8}$ / 5 $\frac{1}{4}$	150 / 87 / 145	- +	12.0	5.4	3.0	220
ETX15 (75)	14	5 $\frac{1}{4}$ / 3 $\frac{1}{2}$ / 6 $\frac{1}{8}$	134 / 90 / 166	+ -	11.0	5.0	3.0	220
ETX15L	14	5 $\frac{1}{4}$ / 3 $\frac{1}{2}$ / 6 $\frac{1}{8}$	134 / 90 / 166	- +	11.0	5.0	3.0	190
ETX16 (129)	19	6 $\frac{1}{8}$ / 4 / 6 $\frac{1}{8}$	175 / 100 / 155	+ -	17.0	7.7	4.0	325
ETX16L (129)	19	6 $\frac{1}{8}$ / 4 / 6 $\frac{1}{8}$	175 / 100 / 155	- +	17.0	7.7	4.0	325
ETX18L	20	8 $\frac{1}{8}$ / 3 $\frac{1}{8}$ / 6 $\frac{1}{8}$	206 / 91 / 163	- +	18.0	8.2	5.0	340
ETX20L	17.5	6 $\frac{1}{8}$ / 3 $\frac{1}{8}$ / 6 $\frac{1}{8}$	175 / 87 / 155	- +	15.5	7.0	4.0	310
ETX30L	26	6 $\frac{1}{8}$ / 5 $\frac{1}{8}$ / 6 $\frac{1}{8}$	168 / 131 / 176	- +	21.7	9.8	6.0	400
ETX30LA	26	6 $\frac{1}{8}$ / 5 $\frac{1}{8}$ / 7 $\frac{1}{8}$	168 / 131 / 197	- +	21.7	9.8	6.0	400

# SAFETY FIRST

**⚠ DANGER/POISON**

 <b>SHIELD EYES.</b> EXPLOSIVE GASES CAN CAUSE BLINDNESS OR INJURY.	 <b>NO</b> • SPARKS • FLAMES • SMOKING	 <b>SULFURIC ACID</b> CAN CAUSE BLINDNESS OR SEVERE BURNS.	 <b>FLUSH EYES IMMEDIATELY WITH WATER.</b>  <b>GET MEDICAL HELP FAST.</b>
--	---	---	--

**KEEP OUT OF THE REACH OF CHILDREN.  
DO NOT TIP. KEEP VENT CAPS TIGHT AND LEVEL.  
DO NOT OPEN FLUSH COVER BATTERIES.**

**DANGER**  
EXPLOSIVE GASES

Cigarettes, flames or sparks could cause battery to explode. Always shield eyes and face from battery. Do not charge or use booster cables or adjust post connections without proper instruction and training.

**KEEP VENT CAPS TIGHT AND LEVEL.**

---

**POISON**  
CAUSES SEVERE BURNS

Contains sulfuric acid. Avoid contact with skin, eyes or clothing. In event of accident flush with water and call a physician immediately.

**KEEP OUT OF REACH OF CHILDREN.**

## CALIFORNIA PROPOSITION 65 WARNING

Batteries, battery posts, terminals and related accessories contain lead and lead compounds, and other chemicals known to the state of California to cause cancer, birth defects and reproductive harm.

**Wash hands after handling.**

## DANGER OF EXPLODING BATTERIES

Batteries contain sulfuric acid and produce explosive mixtures of hydrogen and oxygen. Because self-discharge action generates hydrogen gas even when the battery is not in operation, make sure batteries are stored and worked on in a well-ventilated area. **ALWAYS wear safety glasses and a face shield** when working on or near batteries. When working with batteries:

- **Always wear proper eye, face and hand protection.**
- Keep all sparks, flames and cigarettes away from the battery.
- Do not attempt to open a flush cover battery.
- **Never lean over battery** while boosting, testing or charging.
- Cover vent caps with a damp cloth to minimize gas seepage.
- Make sure work area is well ventilated.
- **Do not remove or damage vent caps.**

## SAFE BATTERY INSTALLATION

To assure safe installation and proper operation, follow these installation procedures:

- **Always wear proper eye, face and hand protection.**
- **Disconnect ground cable first.** (This is usually the negative cable. However, older vehicles may have a positive ground).
- Remove old battery – note position of positive (+) terminal and negative (–) terminal. **Mark the cables for correct connection to new battery.**
- Clean terminals and cable connections with a wire brush. Broken connections or frayed or cut cables should be replaced.
- Install the new battery in the same position as the old one.\* **Be sure to secure it with the hold-down assembly.‡**
- Make sure the terminals do not touch any metal mounting, engine or body parts.
- Connect cables tightly. **Connect ground cable last to avoid sparks.**

\* Premium AGM batteries are supplied with unique terminal hardware (2 spacers and 2 bolts for cable to terminal connection). This hardware is required for proper installation among various applications. Other hardware may damage terminals and should not be used. The spacers are required for side mount cable installation only! **The top mount terminal position does not require the round spacers, use supplied bolts only!**

‡ ETX14, ETX15, ETX16, ETX16L, and ETX30LA batteries may require included height adapter(s) for secure installation into the vehicle. If the adapter is not needed, discard.

**Installation of height adapter(s):** Remove adapter(s) from top of battery, flip adapter over (tabs facing up) and install on the bottom of battery. Battery should fit securely between tabs. Installation of an adapter will raise the height of the battery allowing use of the vehicle's original hold-down. Be sure the battery is securely anchored in the battery tray. If not, modifications to the vehicle's hold-down may be necessary.

## SAFE CHARGING

Before beginning the charging operation, read and follow the instructions that come with the charger. **Never attempt to charge a battery without first reviewing the instructions for the charger being used.** In addition to the charger manufacturer's instructions, these general precautions should be followed:

- Always charge batteries in a well-ventilated area and **wear proper eye protection.**
- Turn the charger and timer "OFF" before connecting the leads to the battery **to avoid dangerous sparks.**
- To avoid an explosion, never try to charge a visibly damaged or frozen battery.
- Connect the charger leads to the battery; red positive (+) lead to the positive (+) terminal and black negative (-) lead to the negative (-) terminal. If the battery is still in the vehicle, connect the negative lead to the engine block, away from the battery, to serve as a ground. (If the vehicle is positive grounded, connect the positive lead to the engine block.)
- Make sure that the leads to the connections are tight.
- Set the timer, turn the charger on and slowly increase the charging rate until the desired ampere value is reached.
- If the battery becomes hot or if violent gassing or spewing of electrolyte occurs, reduce the charging rate or temporarily halt the charger.
- Always turn the charger "OFF" before removing charger leads from the battery **to avoid dangerous sparks.**

## PREMIUM AGM CHARGING

The Premium AGM Power Sports Battery Line is a sealed valve regulated design. Proper charging is important since overcharging and undercharging will damage the product. **We recommend the use of a voltage regulated charger having on-charge voltage, at room temperature, at or between 14.4 to 14.6 volts at 68°F (20°C).** The only way to determine state of charge of your Power Sports Battery is with a voltmeter. The chart at right shows the relationship of stabilized voltage to state of charge.

<b>OPEN CIRCUIT VOLTAGE AS IT RELATES TO STATE OF CHARGE.</b>	
<u>Open Circuit Voltage*</u>	<u>State of Charge</u>
12.70 or greater . . . . .	100%
12.60 . . . . .	75%
12.30 . . . . .	50%
12.00 . . . . .	25%
11.80 . . . . .	0%

\* The actual stabilized OCV can only be determined after the battery has been removed from the charger for 24 hours.

PART NO.	FOOT-NOTES	CCA @ 0°F	10 AH Rating	APPROX. WT.		LENGTH		WIDTH		HEIGHT		<i>Replaces these part numbers:</i>
				lbs.	kg	in.	mm	in.	mm	in.	mm	
ETX9	38,39	120	8	7.1	3.2	5½	150	3⅞	88	4⅞	106	YTX9, YTX9-BS
ETX12	38,39	180	10	9.4	4.3	5½	150	3⅞	88	5½	130	YTX12, YTX12-BS, YB12B-B2
ETX14	38,39,42,75	220	12	12.0	5.4	5½	150	3⅞	88	5½	145	YTX14, YTX14-BS, YTX16-BS, YTX16-BS-1, GYZ16H, YB16B-A (1), YB16B-A1 (1)
ETX14L	38,39	220	12	12.0	5.4	5½	150	3⅞	88	5½	145	YTX14L, YTX14L-BS
ETX15	38,39,42,76	220	14	11.0	5.0	5½	134	3½	90	6⅞	166	YTX14AH, YTX14AH-BS, YB14-A2, YB14-B2, YB14A-A1 (1), YB14A-A2
ETX15L	38,39	220	14	11.0	5.0	5½	134	3½	90	6⅞	166	YTX14AHL, YTX14AHL-BS, YB14L-A1, YB14L-A2, YB14L-B2, 12N14-3A, SYB14L-A2 (2), SYB14L-B2 (2), 12N14-3B
ETX16	38,39,42,74	325	19	17.0	7.7	6⅞	175	4	100	6⅞	155	YB16-B-CX, YB16-B, YB16C-B, Y60-N24-A
ETX16L	38,39,42,74	325	19	17.0	7.7	6⅞	175	4	100	6⅞	155	YB16HL-A-CX, YB16L-B, YB16CL-B, Y60-N24AL-B, 12N16-3B, 12N24-3, 12N24-3A, SYB16L-B
ETX18L	38,39	340	20	18.0	8.2	8⅞	206	3⅞	91	6⅞	163	YTX24HL, YTX24HL-BS, Y50-N18L-A-CX, Y50-N18L-A-LM, Y50-N18L-A, Y50-N18L-A3, SY50-N18L-AT (2), 12N18-3A
ETX20L	38,39	310	17.5	15.5	7.0	6⅞	177	3⅞	88	6⅞	155	YTX20L, YTX20L-BS, YTX20HL, YTX20HL-BS, YTX20HL-BS-PW, GYZ20L, YB18L-A
ETX30L	38,39	400	26	21.7	9.8	6⅞	168	5⅞	131	6⅞	176	YIX30L, YB30LB
ETX30LA	38,39,78	400	26	21.7	9.8	6⅞	168	5⅞	131	7¼	197	YB30CL-B

All batteries have a black cover and gray case.

**FOOTNOTES:** 38 – “Non-spillable” defined by DOT (Department of Transportation) definitions

39 – “Non-spillable” defined by ICAO (Int’l Comm. Airline Org.) and IATA (Int’l Airline Transport Assoc.) definitions

42 – Height without adapter

74 – Shipped with 20mm adapter

75 – Shipped with two (2) 17mm adapters

76 – Shipped with 10mm adapter

78 – Shipped with 22mm height adapter

(1) – Hold-down modification required

(2) – Disable sensor

# MOTORCYCLES

# APPLICATION DATA

CC	MODEL	YEAR	PREMIUM AGM Activated/ Ready to install
<b>APRILIA</b>			
1000cc	ETV 1000 Capo Nordo	2003-02	ETX14
	Futura	2005	ETX12
	RST Futura	2004-01	ETX12
	RSV 1000 R, Factory	2011-04	ETX12
	RSV Mille,R, SP	2009-00	ETX12
	SL 1000 Falco	2003-00	ETX14
	Tuono	2011-03	ETX12
850cc	MANA850	2011-09	ETX14
750cc	Dorsoduro	2011-09	ETX14
	Pegaso Strada, Factory, Trail	2010	ETX12
	Shiver	2011-09	ETX14
650cc	Pegaso 650	1999-92	ETX15L
	Pegaso Strada, Factory, Trail	2010-09	ETX12
600cc	Tuareg 600 Wind	1988-87	ETX15L
500cc	Atlantic 500	2005-02	ETX15L
	Scarabeo	2011-09	ETX12
	Scarabeo	2005-04	ETX15L
349cc	EXT 350	1998-85	ETX15L
	Tuareg 350	1998-87	ETX15L
	Wind	1987	ETX15L
150cc	Leonardo 150	2005	ETX14
<b>BENELLI</b>			
900cc	900 (6 Cyl)		ETX30LA{146}
500cc	500LS		ETX15L
150cc	Velvet	1999	ETX9
<b>BIG DOG</b>			
1750cc	Boxer, Bulldog	ALL	ETX20L
	Husky/ Husky XT	ALL	ETX20L
	Mastiff, Pitbull	ALL	ETX20L
	Prosport, Prosport 18	ALL	ETX20L
	Vintage Classic, Sport	ALL	ETX20L
	Woft	ALL	ETX20L
1570cc	Vintage Classic / Light	ALL	ETX20L
1442cc	Aerosport, Bulldog	ALL	ETX20L
	Pitbull, Prosport	ALL	ETX20L
	Vintage Classic / Light	ALL	ETX20L
1340cc	Aeroglide, Aerosport	ALL	ETX20L
	Coyote, Proglide	ALL	ETX20L
	Vintage Classic / Light	ALL	ETX20L
<b>BMW</b>			
1300cc	K1300R, S	2012-09	ETX14
1200cc	HP2 Sport/Megamoto	2011-10	ETX14
	K1200R, S	2012-05	ETX14
	R1200GS	2012-05	ETX14
900cc	R90/6,S	1976-74	ETX30LA{146}
800cc	F800ST, GS	2012-09	ETX14
750cc	K75	1995-94	ETX30LA{146}
<b>BOURGET BIKE WORKS</b>			
	Chopper, Magnum		ETX20L
	Fatso, Auto-Motorcycle, Retro		ETX20L
	Joker, Black Jack Ace, Kruzer,		ETX20L
	Low-Blow, Beach Crusier, Fat Daddy		ETX20L
<b>BUELL</b>			
1200cc	Cyclone M2	2002-97	ETX20L
	Lightning S1	1999-96	ETX14
	Lightning X1	2002-99	ETX20L
	RR,RS1200	1994-89	ETX16{56}
	Thunderbolt S2	1996-95	ETX16{56}
	Thunderbolt S3	2002-97	ETX20L
	XB12R,S	2010-04	ETX14
	XB12X Ulysses	2010-06	ETX14
1125cc	1125R, CR	2010-08	ETX14L
1000cc	RR1000	1988-87	ETX16{56}

CC	MODEL	YEAR	PREMIUM AGM Activated/ Ready to install
<b>BUELL (Continued)</b>			
984cc	Firebolt XB9R,Lightning XB9S	2010-02	ETX14
500cc	Blast	2009-01	ETX14
<b>CAGIVA</b>			
900cc	Elefant E900		ETX14
750cc	Elefant	1997-94	ETX16{56}
500cc	T4 E Elefant	1988	ETX15L
350cc	Elefant 2 Cyl.	1986	ETX15L
	Elefant Bifaro	1989	ETX15L
	T4 E Elefant	1987	ETX15L
<b>CAN AM</b>			
990cc	Spyder	2012-07	ETX18L
<b>CCM</b>			
600cc	All Electric Start	2001-96	ETX9
<b>DUCATI</b>			
1000cc	Hailwood Replica	1985-81	ETX16
900cc	I.E.,Paso	1995-90	ETX16{56}
860cc	860 GS,GTS	1980-78	ETX30LA{146}
750cc	750 F1,Paso	1998-97	ETX15L
	750 F1,Paso	1988-85	ETX15L
650cc	650 Indiana	1987	ETX15L
600cc	600 Monster	2000	ETX15L
	600 SL Pantha	1984-81	ETX15L
500cc	500 SL Pantha	1981	ETX15L
<b>EXCELSIOR-HENDERSON</b>			
1386cc	Super X	2001-99	ETX20L
<b>GILERA</b>			
600cc	RC 600C	1993	ETX15L
	Top Rally, XRT		ETX15L
	XRT		ETX15L
350cc	Nordwest	1993	ETX15L
<b>HARLEY-DAVIDSON</b>			
1803cc	CVO FLH (Touring)	2012-10	ETX30LA{146}
	CVO FLST (Softail)	2012-10	ETX20L
	CVO FXD Fat Bob (Dyna)	2012-10	ETX20L
1690cc	FLHTK (Touring)	2012-10	ETX30LA{146}
	FLST, FXST Series (Softail)	2012-11	ETX20L
1584cc	FL/FLH Series(Touring)	2012-07	ETX30LA{146}
	FXD Series(Dyna)	2012-07	ETX20L
	FXST, FLST Series(Softail)	2012-07	ETX20L
1450cc	FL/FLH Series(Touring)	2006-99	ETX30LA{146}
	FLST,FXST Series(Softail)	2008-00	ETX20L
	FXD Series(Dyna)	2006-99	ETX20L
1340cc	FL/FLH Electra,Sport,Tour	1996-80	ETX18L
	FL/FLH Series(Touring)	2009	ETX30LA{146}
	FL/FLH Series(Touring)	1998-97	ETX30LA{146}
	FL/FLH Series(Touring)	1996-82	ETX18L
	FLST Series(Softail)	1999-97	ETX20L
	FLST Series(Softail)	1996-91	ETX16L
	FX/FXR Series	1994-79	ETX16
	FXD Dyna	1996-91	ETX16L
	FXD Dyna	1983	ETX16L
	FXD/FXST Series(Dyna)	2006	ETX20L
	FXD/FXST Series(Dyna)	1998-97	ETX20L
	FXST Series(Softail)	1996-91	ETX16L
	FXST Softail	1998-97	ETX20L
	FXST/FLST Softail	1990-84	ETX16
	FXSTC Series(Softail)	1996-91	ETX16L
1250cc	VRSC V-Rod	2012-08	ETX20L
1200cc	FX Series - Electric Start	1980-71	ETX16
	XL Sportster Series	2003-97	ETX20L
	XL, XLH Sportster	2012-04	ETX14L
	XL/XLH Sportster,Roadster	1996-88	ETX16

{56} Hold-down modifications may be necessary. {146} Do NOT Use Height Adapter Supplied with Battery.

# APPLICATION DATA

# MOTORCYCLES

CC	MODEL	YEAR	PREMIUM AGM Activated/ Ready to install
<b>HARLEY-DAVIDSON (Continued)</b>			
1200cc	XR1200X	2011	ETX14L
1130cc	VRSC V-Rod	2008-02	ETX14
1100cc	XL/XLH Sportster,Roadster	1992-86	ETX16
1000cc	XL, XLH Sportster	1985-79	ETX16
	XLCR Cafe Racer	1978-77	ETX16
	XLS Roadster	1985-79	ETX16
	XLX61, XR1000	1985-83	ETX16
883cc	XL Sportster Series	2003-97	ETX20L
	XL, XLH Sportster	2012-04	ETX14L
	XL/XLH Sportster,Roadster	1996-86	ETX16
500cc	MT500 (Military)	1998-95	ETX15L
<b>HONDA</b>			
1800cc	GL1800 Goldwing	2012-01	ETX20L
	NRX1800 Valkyrie	2005-04	ETX20L
	VTX1800	2011-02	ETX20L
1500cc	GL1500 Goldwing	2002-88	ETX18L
	GL1500 Valkyrie	2003-97	ETX14
1300cc	VTX1300R,S, Retro	2012-03	ETX14
1200cc	GL1200 Goldwing	1987-84	ETX18L
1100cc	CB1100F Supersport	1983	ETX15L
	CBR1100XX	2000-97	ETX12
	GL1100 Goldwing	1983-80	ETX18L
	ST1100,ABS	2002-91	ETX14
	VF1100S V65 Sabre	1985-84	ETX20L{56}
	VT1100	2007-00	ETX14
1050cc	CBX	1982-79	ETX20L{56}
1000cc	CB1000	1995-94	ETX12
	CB1000C Custom	1983	ETX15L
	CBR1000F Hurricane	1996-87	ETX15L
	GL1000 Goldwing	1979-75	ETX18L
	VF1000R Interceptor	1986-84	ETX14
	VTR1000F Super Hawk	2000-97	ETX12
900cc	CB900C,F	1982-80	ETX15L
	CBR900RR	1999-93	ETX9
800cc	PC800 Pacific Coast	1998-89	ETX12
	VFR800F1 Interceptor	2001-98	ETX12
	VT800C Shadow	1988	ETX15
750cc	CB750 Nighthawk	2003-91	ETX15
	CB750A Hondamatic	1978-76	ETX18L
	CB750C Custom	1982-80	ETX15L
	CB750F Supersport	1982-75	ETX15L
	CB750K, Limited	2001-99	ETX15L
	CB750K, Limited	1994	ETX15L
	CB750K, Limited	1982-69	ETX15L
	CB750SC Nighthawk	1983-82	ETX15L
	RVF750R	1994	ETX9
	VF750C V45 Magna	1983-82	ETX15
	VF750C,D Magna	2003-95	ETX12
	VF750F V45 Interceptor	1984-83	ETX15
	VF750S V45 Sabre	1983-82	ETX15L{55}
	VFR750F	1997-90	ETX12
	VFR750R	1990	ETX9
	VT750C,D Shadow, Ace Deluxe	2003-98	ETX14
700cc	CB700SC Nighthawk	1986-84	ETX15L
	VF700C Magna	1986-84	ETX15
	VF700F Interceptor	1985-84	ETX15
	VF700S Sabre	1985-84	ETX15L
	VT700C Shadow	1987-86	ETX15
650cc	CX650C Custom	1983	ETX15
	CX650T Turbo	1983	ETX15L
	GL650I Silverwing Interstate	1983	ETX15L
	NT650 Hawk GT	1991-88	ETX9
	NT650V	1991	ETX9
	NX650	1989-88	ETX9
	SLR650	ALL	ETX9

CC	MODEL	YEAR	PREMIUM AGM Activated/ Ready to install
<b>HONDA (Continued)</b>			
650cc	Vigor 650	ALL	ETX9
	XR650L	2012-93	ETX9
600cc	CBR600	2000-87	ETX9
	VT600C,CD,Shadow Deluxe,VLX	2003-88	ETX9
500cc	CX500,C,D,T	1982-78	ETX15L
	FT500 Ascot	1983-82	ETX15L
	GL500 Interstate,Silver Wing	1982-81	ETX15L
400cc	CB400F	1990-89	ETX9
200cc	TR200 Fat Cat	1987-86	ETX9
<b>HUSABERG</b>			
600cc	FC600	1992	ETX9
499cc	FC499	1992	ETX9
400cc	FC400	2000-97	ETX9
<b>HUSQVARNA</b>			
610cc	SM 610 S Supermotard	2002-99	ETX14
	TE610	2002-98	ETX14
410cc	410 WXC	2002-01	ETX14
400cc	400 TE	2002-01	ETX14
360cc	WR360	2002-01	ETX14
250cc	WR250	2001-00	ETX14
<b>HYOSUNG</b>			
650cc	GT650, R, S	2011-09	ETX14
250cc	GT250, R	2011-09	ETX14
	GV250	2011-09	ETX9
<b>INDIAN</b>			
1650cc	Chief	2003-02	ETX18L
1450cc	Scout,Spirit	2003-02	ETX16{56}
<b>KAWASAKI</b>			
2000cc	VN2000-A Vulcan	2012-04	ETX14
1700cc	VN1700 Voyager, Nomad, Vaquero	2012-09	ETX14
1600cc	VN1600-A Vulcan Classic, D,Nomad	2009-03	ETX14
	VN1600-B Vulcan Mean Streak	2009-04	ETX14
1500cc	VN1500 Vulcan 88	1998-87	ETX18L
	VN1500-D, E, N Vulcan Classic	2009-96	ETX14
	VN1500G,J,L,R Nomad,Drifter	2006-99	ETX14
	VN1500P Mean Streak	2003-02	ETX14
1400cc	ZG1400 Concours	2012-08	ETX14
	ZX14 Ninja	2012-06	ETX14
1300cc	KZ1300 Voyager	1982-79	ETX18L
	ZN1300 Voyager	1988-83	ETX16L
1200cc	ZG1200 Voyager XII	2003-86	ETX18L{57}
	ZRX1200 DAEG	2011-09	ETX12
	ZRX1200R	2005-01	ETX14
	ZX-12R	2005-00	ETX14
	ZX1200	2002-00	ETX14
	ZZR1200	2005-02	ETX14
1100cc	KZ1100 GPZ	1982	ETX16L
	KZ1100, LTD	1983-81	ETX20L{56}
	ZN1100 LTD	1985-84	ETX15L
	ZR1100	1993	ETX14
	ZRX1100	2000-99	ETX14
	ZX1100 GPZ	1984-83	ETX16L
	ZX1100 GPZ,ABS	1997-95	ETX14
	ZX1100 Ninja ZX-11	1993-91	ETX15L
	ZX1100D Ninja ZX-11	2001-94	ETX14
1000cc	GPZ1000	1982	ETX15L
	KZ1000	1977	ETX15L
	KZ1000 Replica	1983-82	ETX20L{56}
<b>KAWASAKI</b>			
1000cc	KZ1000, CSR, LTD	1983-80	ETX20L{56}
	KZ1000, LTD	1980-77	ETX15L
	KZ1000C,Police	1981-80	ETX16L{56}
	KZ1000E,Shaft	1980-79	ETX16L{56}

{55} Sensor NOT included with replacement battery. Disconnect sensor. {56} Hold-down modifications may be necessary.

{57} When ordering battery, specify sensor.

# MOTORCYCLES

# APPLICATION DATA

CC	MODEL	YEAR	PREMIUM AGM Activated/ Ready to install
<b>KAWASAKI (Continued)</b>			
1000cc	KZ1000G	1980	ETX15L
	KZ1000P,Police	2005-02	ETX20L
	KZ1000P,Police	2001-81	ETX20L{56}
	Z1000	2012-03	ETX9
	ZG1000 Concours	2006-86	ETX20L{56}
	ZL1000 Eliminator	1987	ETX15L
	ZX1000 Ninja	1990-86	ETX15L
900cc	900Z	1975-73	ETX15L
	Ninja GPZ900R ZX900A1-A16	2003-84	ETX15L
	Vulcan 900 Classic	2012-06	ETX12
	ZL900 Eliminator	1986-85	ETX15L
	ZX900 Ninja	1986-84	ETX15L
	ZX900 Ninja ZX-9R	2003-98	ETX9
	ZX900-B Ninja ZX-9R	1997-94	ETX12
800cc	VN800 Vulcan Classic,Drifter	2006-04	ETX12
	VN800 Vulcan,Classic	2003-95	ETX14
750cc	KZ750	1979-76	ETX15L{55}
	KZ750 Spectre	1983-82	ETX15L
	KZ750, LTD	1980	ETX15L
	VN750A Vulcan	2006-86	ETX15L
	Z750 (EU)	2011-09	ETX9
	ZR-7,S	2003-00	ETX12
	ZR750, S	2006-05	ETX9
	ZR750C,Zephyr	1992-91	ETX12
	ZX750 GPZ	1985-83	ETX15L{55}
	ZX750 Ninja R	1990-87	ETX15L
	ZX750 Ninja ZX-7	1995-91	ETX12
	ZX750 Ninja ZX-7	1989	ETX15L
	ZX750 Ninja ZX-7RR	1997-91	ETX9
	ZX750P, Ninja ZX-7R	2003-91	ETX12
700cc	VN750A Vulcan	1985	ETX15L
	ZN700 LTD	1985-84	ETX15L
650cc	ER6n	2012-09	ETX12
	KL650A,KLR	2012-87	ETX15L
	KLE650 Versys	2012-08	ETX12
	KLX650	1996-93	ETX9
	Ninja 650R	2012-06	ETX12
	W650	2002-00	ETX14
636cc	ZX636-B, C Ninja ZX-6R	2006-03	ETX9
600cc	KL600B	1986-85	ETX15L
	ZX600 E, F Ninja ZX-6, 6R	2002-93	ETX12
	ZX600 G, J Ninja ZX-6R	2008-98	ETX9
	ZX600 K, M, N Ninja ZX-6RR	2006-03	ETX9
	ZX600-FA Ninja ZX-6R	2012-08	ETX9
	ZZR-600	2009-05	ETX9
	ZZR-600	2004-02	ETX12
500cc	EX500A,D Ninja, R	2010-87	ETX15L
250cc	EX250 Ninja R	2012-09	ETX9
<b>KTM</b>			
640cc	Adventure, Duke, Super Moto	2002-99	ETX9
620cc	620 LC4	1998-94	ETX9
	620 SC Rally Adventure	1998-94	ETX9
	Duke 620e	1997-95	ETX9
400cc	400 LC4 EXC	2002-93	ETX9
	400 LC4 RXC	1999-94	ETX9
	400 LC4 SXC	2002-00	ETX9
<b>LAVERDA</b>			
1200cc	Mirage	1982	ETX30LA{146}
	TS Mirage	1984-83	ETX30LA{146}
1000cc	Corsa	1984	ETX30LA{146}
	Jota	1984-82	ETX30LA{146}

CC	MODEL	YEAR	PREMIUM AGM Activated/ Ready to install
<b>MOTO GUZZI</b>			
1200cc	Norge	2012-09	ETX14{124}
	Sport, ABS	2012-09	ETX14{124}
	Stervio	2012-09	ETX14{124}
1100cc	Bassa	2000-94	ETX30LA{146}
	Breva, Griso	2012-05	ETX14{124}
	California 1100, Jackal, Special	2012-05	ETX14{124}
	California 1100, Jackal, Special	2004-94	ETX30LA{146}
	V11EV	2005-98	ETX30LA{146}
1064cc	California Classic, Vintage	2012-10	ETX20L
1000cc	Daytona	1997-93	ETX30LA{146}
	LAPD	1993	ETX20L{56}
	S	1993	ETX20L{56}
936cc	Bellagio	2010	ETX20L
850cc	850 T5	1985-84	ETX30LA{146}
	LeMans III	1984-83	ETX30LA{146}
750cc	Breva	2010-04	ETX15L
	V-75	1987-86	ETX20L{56}
	V7 Classic	2012-09	ETX15L
500cc	V-50 II	1982-80	ETX30LA{146}
<b>MOTO MORINI</b>			
500cc	500 Camel,Special, Sport	1985-82	ETX20L{56}
350cc	350 Kangaru	1985-83	ETX20L{56}
<b>MOTO-SKI</b>			
500cc	Futura 500	1980	ETX15L
	Grand Prix Special	1980	ETX15L
464cc	Futura LC	1980	ETX15L
440cc	Ultra Sonic	1980	ETX15L
<b>MUZ</b>			
500cc	Saxon Country,Tour,Silver Star	1998-95	ETX15L
<b>NORTON</b>			
1200cc	9 1/2	2010	ETX14{124}
	Corsaro, Veloce, Avio	2010	ETX14{124}
	Granpasso	2010	ETX14{124}
	Scrambler	2010	ETX14{124}
	Sport	2010	ETX14{124}
850cc	850 Commando		ETX15L
<b>PIAGGIO (VESPA)</b>			
250cc	Superhexagon GTX		ETX12
	X9		ETX12
	APE CAR,MP		ETX30LA{146}
<b>POLARIS (VICTORY)</b>			
1731cc	Vision, Jackpot	2011-08	ETX20L
1634cc	Vegas, Kingpin, Hammer, Jackpot, 8-ball	2012-08	ETX20L
1500cc	V92C,DC	2003-98	ETX20L
	V92SC	2001-00	ETX20L
	V92TC	2006-02	ETX20L
	V92V	2007-03	ETX20L
<b>ROYAL ENFIELD</b>			
	All Models - Electric Start	2003-00	ETX15L
<b>SUZUKI</b>			
1800cc	VLR1800 (C109R)	2012-06	ETX14{124}
	VZR1800(M109R)	2012-06	ETX14{124}
1600cc	M95	2005	ETX14
	Marauder	2005-04	ETX14
1500cc	C90(Intruder)	2006-05	ETX14
	VL1500 Intruder	2012-98	ETX14
	VZ1500 Boulevard M90	2012-09	ETX14{124}
1400cc	GV1400G,C,D Cavalcade	1989-86	ETX18L{57}
	VS1400GLP Intruder	2011-87	ETX14
1300cc	GSX1300BK	2011-08	ETX12
	GSX1300R	2012-08	ETX12

{55} Sensor NOT included with replacement battery. Disconnect sensor. {56} Hold-down modifications may be necessary. {57} When ordering battery, specify sensor. {124} Shipped with 17mm adapter that may be required for proper fit. {146} Do NOT Use Height Adapter Supplied with Battery.



# APPLICATION DATA

# MOTORCYCLES

CC	MODEL	YEAR	PREMIUM AGM Activated/ Ready to install
<b>SUZUKI (Continued)</b>			
1200cc	GSF1200,S Bandit	2005-97	ETX12
	GV1200GL Madura	1986-85	ETX15L
1150cc	GS1150E,S	1986-83	ETX15L{55}
1100cc	GS1100E,S	1983-80	ETX15L{55}
	GS1100G,K,L	1984-80	ETX15L
	GSX1100F Katana	1993-88	ETX15L
	GSX1100G	1993-91	ETX14
	GSXR1100	1992-86	ETX15L
	GSXR1100W	1998-93	ETX12
1000cc	DL1000	2012-02	ETX14
	GS1000	1982-78	ETX15L
	GSXR1000	2004-01	ETX12
	SV1000	2007-03	ETX14
	TL1000S	2002-97	ETX12
900cc	RF900R	1997-94	ETX9
850cc	GS850G,GL	1986	ETX15L
	GS850G,GL	1983-79	ETX15L
800cc	C50 Boulevard(Volusia)	2007-05	ETX12
	M50(Marauder)	2006-05	ETX12
	S50 Boulevard(Intruder)	2006-05	ETX14
	VL800	2010-01	ETX12
	VS800GL, Intruder	2012-92	ETX14
	VX800	1993-90	ETX14
	VZ800 Marauder	2008-97	ETX12
750cc	GS750, Katana	1983-77	ETX15L
	GSX750F Katana	2006-98	ETX9
	GSX750F Katana	1997-89	ETX15L
	GSXR750	1999-96	ETX9
	GSXR750	1992-86	ETX15L
	GSXR750W	1995-94	ETX9
	GSXR750W	1993	ETX15L
	GT750 Lemans	1977-72	ETX15L
	VS750GLP Intruder	1991-88	ETX14
700cc	GS700E,ES	1985	ETX15L
	GSX700E	1985	ETX15L
	GV700GL Madura	1986-85	ETX15L
	VS700GL Intruder	1987-85	ETX14
670cc	XN85 Turbo	1983	ETX15L
650cc	DL650	2012-04	ETX12
	DR650SE	2012-97	ETX9
	DR650SE	1995-94	ETX12
	GR650 Tempter,X	1984-83	ETX15L
	GS650G,L,M	1983-81	ETX15L
	GSX650F	2011-08	ETX9
	LS650 Savage, S40	2012-86	ETX15L
	SV650, S	2012-03	ETX12
	XN85 Turbo	1984	ETX15L
620cc	QUV620F	2006-05	ETX20L
600cc	GSF600S Bandit	2002-95	ETX9
	GSX600F Katana	2006-98	ETX9
	GSXR600,W	2012-97	ETX9
	GSXR600,W	1993-92	ETX9
	RF600R	1996-94	ETX9
450cc	GS450	1988-83	ETX12{56}
400cc	GSF400 Bandit	1993-91	ETX9
300cc	GS300L	1985-82	ETX12{56}
125cc	DRZ125	2012	ETX20L
<b>TRIUMPH</b>			
2300cc	Rocket 3	2012-03	ETX20L
1600cc	Thunderbird	2012-10	ETX20L
1200cc	Daytona 1200	1999	ETX15L
	Daytona 1200	1997-93	ETX15L
	Trophy 1200	2004-91	ETX14
1050cc	Sprint GT	2012-11	ETX12
	Sprint ST, Speed Triple	2012-05	ETX12

CC	MODEL	YEAR	PREMIUM AGM Activated/ Ready to install
<b>TRIUMPH (Continued)</b>			
955cc	Daytona 955i	2001-97	ETX14
	Speed Triple	2004-98	ETX14
	Sprint RS,ST	2002-99	ETX14
	Tiger	2002-01	ETX14
900cc	Scrambler, Bonneville	2007-06	ETX12
	Thruxton	2008-03	ETX12
885cc	Daytona, Legend, Adventurer	2001-93	ETX15L
	Speed,Sprint,SS	1999-93	ETX15L
	Thunderbird,Trident, Trophy	2003-91	ETX15L
	Tiger	2001-93	ETX14
790cc	America	2003-02	ETX12
	Bonneville	2005-01	ETX12
	Speedmaster	2005-03	ETX12
750cc	Royal T140ES	1982	ETX15L
	Trident 750	1998-95	ETX15L
675cc	Street Triple	2012-09	ETX9
600cc	Daytona	2005-03	ETX9
	Speed Triple	2003	ETX12
	TT600	2003-00	ETX12
<b>YAMAHA</b>			
1700cc	XV1700A, RS, Silverado	2007-04	ETX20L
1600cc	XV1600 Road Star	2006-99	ETX20L
1300cc	Stryker	2012-11	ETX20L
	V Star 1300	2012-09	ETX20L
	XVZ13 Royal Star	2012-96	ETX20L
	XVZ13 Venture Royale	1993-86	ETX18L{57}
1200cc	FJ1200	1993-91	ETX14
	FJ1200	1990-86	ETX15L
	XVZ12 Venture Royale	1985-83	ETX18L
1100cc	FJ1100	1985-84	ETX15L
	XJ1100 Maxim	1982	ETX18L
	XS1100	1983-78	ETX18L
	XV1100 Virago	1999-86	ETX18L
1000cc	FZR1000	1996-91	ETX14
	FZR1000	1990-87	ETX15L
	GTS1000A	1994-93	ETX14
	XV1000 Virago	1985-84	ETX18L
	YZF1000R	1998-97	ETX14
920cc	XV920 Virago	1982	ETX18L{57}
	XV920,R,M Virago	1983-81	ETX18L
900cc	XJ900R Seca	1983	ETX15L
850cc	TDM850	1993-92	ETX12
	XS850	1981-80	ETX15L
750cc	FZ750,R	1988-85	ETX15L
	TX750	1974-73	ETX16L{56}
	XJ750 Maxim	1983-82	ETX15L{55}
	XJ750M Midnight Maxim	1983	ETX15L
	XJ750R Seca	1983-81	ETX15L
	XS750	1979-74	ETX15L
	YZF750,R	1998-94	ETX12
700cc	FZ700 Fazer	1987-86	ETX15L
	FZX700 Fazer	1987-86	ETX15L
	XJ700X Maxim, X	1986-85	ETX15L
650cc	TX650	1974	ETX15L
	XS650	1983-75	ETX15L
600cc	XJ600S Seca II	1999-92	ETX9
	XT600,E	1996-90	ETX9
	YZF600R	2007-95	ETX12
550cc	XZ550R Vision	1983-82	ETX15L
500cc	TX500	1974-73	ETX15L
	XS500	1978-75	ETX15L

{55} Sensor NOT included with replacement battery. Disconnect sensor. {56} Hold-down modifications may be necessary.  
 {57} When ordering battery, specify sensor.

CC	MODEL	YEAR	PREMIUM AGM Activated/ Ready to install
<b>ARCTIC CAT</b>			
700cc	700	2008-06	ETX15
	H1	2009	ETX16
650cc	All 650 Models	2011-04	ETX15
500cc	All 500 Models	2010-04	ETX15
400cc	DVX	2010-04	ETX9
	LE, TBX, VP	2005-04	ETX15
	TRV400	2010-08	ETX15
366cc	366	2011-08	ETX15
300cc	All 300 Models	2010-04	ETX15L
	DVX 300	2011-10	ETX12
250cc	All 250 Models	2005-04	ETX15L
	DVX250	2010-06	ETX12
150cc	150	2011-10	ETX9

<b>BRP (CAN-AM)</b>			
800cc	Outlander EFI, Renegade	2012-06	ETX20L
650cc	Outlander EFI	2009-06	ETX20L
	Outlander MAX	2010	ETX20L
	Quest	2005-02	ETX16L{56}
	Quest - Optional	2005-02	ETX18L
500cc	Outlander, MAX, Renegade	2012-10	ETX20L
	Quest	2005-99	ETX16L{56}
	Quest - Optional	2005-02	ETX18L
	Traxter	2005-99	ETX16L{56}
	Traxter - Optional	2005-02	ETX18L
400cc	Outlander, XT	2011-04	ETX20L
250cc	DS250	2011-06	ETX12
200cc	Rally	2006-03	ETX15

<b>CANNONDALE</b>			
432cc	All Models	2003-01	ETX9

<b>DAZON</b>			
150cc	Raider - Classic, Max (Kart)	2004	ETX9

<b>E-TON</b>			
250cc	Vector250	2012-10	ETX12
150cc	CXL150 Yukon II	2012-02	ETX9
	Viper150R	2012-10	ETX9
	YXL150 Yukon	2001-00	ETX9

<b>HONDA</b>			
700cc	TRX700XX	2012-08	ETX9
680cc	TRX680 FourTrax Rincon	2012-06	ETX20L
650cc	TRX650FourTrax Rincon	2005-03	ETX14
	TRX650FourTrax Rincon - Optional	2004-03	ETX20L
500cc	TRX500 Foreman, Rubicon, FA, FE, FM, TM	2012-01	ETX14
450cc	TRX450FourTrax, Foreman, ES	2004-98	ETX14
420cc	TRX420 Fourtrax Rancher	2012-11	ETX14
	TRX420 Rancher	2009-07	ETX14
400cc	FL400R Pilot	1990-89	ETX14
	TRX400EX, FourTrax,Sportrax	2012-99	ETX9
	TRX400FW Foreman	2003-95	ETX14
	TRX400Rancher AT	2007-04	ETX14
350cc	FL350R Odyssey	1985	ETX12
	TRX350	1989-86	ETX14
	TRX350 Rancher	2006-00	ETX14
300cc	TRX300EX, Sportrax	2011-93	ETX9
	TRX300FW	2000-88	ETX14
250cc	ATC250ES,SX	1987-81	ETX12
	TRX250 FourTrax	1987-85	ETX12
	TRX250 FourTrax,Recon	2012-97	ETX12
	TRX250X, EX	2012-01	ETX9
200cc	ATC200	1986-81	ETX15
	ATC200X	1987	ETX12
	TRX200 FourTrax	1984	ETX15
	TRX200,SX FourTrax	1998-86	ETX12

CC	MODEL	YEAR	PREMIUM AGM Activated/ Ready to install
<b>HONDA (Continued)</b>			
125cc	ATC125M	1987-86	ETX12
	TRX125	1988-87	ETX9

<b>HYOSUNG</b>			
450cc	TE450S	2012-10	ETX9

<b>KAWASAKI</b>			
750cc	KVF750 Brute Force 4x4	2012-05	ETX14
700cc	KSV700 (KFX700)	2010-04	ETX14
	KVF700A,B,D Prairie 4x4	2006-04	ETX14
650cc	KVF650 Brute Force	2012-02	ETX14
	KVF650 Prairie 650	2008-02	ETX14
400cc	KLF400 Bayou 4x4	2000-93	ETX16L{56}
	KSF400-A(KFX400)	2006-03	ETX9
	KVF400A,B Prairie 400 - Canada	2001-97	ETX16L{56}
	KVF400A,B Prairie 400 - US	2000-97	ETX15
	KVF400C,D Prairie 4x4 - Canada	2002-99	ETX14
	KVF400C,D Prairie 4x4 - US	2002-97	ETX15
360cc	KVF360 Prairie 4x4 - US	2012-03	ETX15
300cc	KEF300 Lakota	2003-95	ETX15
	KLF300 B,C Bayou 4x4 - US	2003-88	ETX15
	KLF300 Bayou	1987-85	ETX16L{56}
	KLF300C Bayou 4x4 - Canada	2005-92	ETX16L{56}
	KVF300A,B Prairie 4x4 - US	2002-99	ETX15
	KVF300B Prairie 300 - Canada	2002-99	ETX16L{56}
250cc	KLF250A-Bayou - Canada	2005-03	ETX15
220cc	KLF220A Bayou - Canada	2002-92	ETX15

<b>KYMCO</b>			
500cc	MXU500	2012-10	ETX20L
300cc	MXU300SD	ALL	ETX12
	Mongoose 300	2012-10	ETX12
250cc	Mongoose	ALL	ETX12
150cc	MXU150	ALL	ETX9

<b>POLARIS</b>			
850cc	Sportsman	2012-10	ETX20L
	Sportsman	2009	ETX30LA{146}
800cc	Sportsman	2012-05	ETX30LA{146}
700cc	Sportsman,Military	2010-02	ETX30LA{146}
600cc	Sportsman	2005-04	ETX30LA{146}
550cc	Sportsman X2	2012-10	ETX20L
	Sportsman XP	2012-10	ETX15
525cc	Outlaw 525	2012-08	ETX9
500cc	All Models ex. Predator	2012-99	ETX15
	Predator, Outlaw	2006-03	ETX9
	Sportsman EFI	2010-06	ETX30LA{146}
	Sportsman HO	2012-96	ETX15
450cc	Diesel .445 Liter - Secondary Battery	2003-99	ETX15
	Diesel .445 Liter - Diesel, Primary Battery	2003-99	ETX30LA{146}
	Outlaw	2010-07	ETX9
400cc	Sportsman HO	2012-08	ETX15
335cc	Sportsman	2001-98	ETX15
330cc	Magnum,Trail Boss	2012-03	ETX15
	Sportsman	2010	ETX15
300cc	Hawkeye 4x4	2010-07	ETX15
200cc	Phoenix, Sawtooth	2012-05	ETX12

<b>SUZUKI</b>			
750cc	LT-A750X King Quad	2012-07	ETX14{124}
700cc	LT-700 King Quad	2007-05	ETX14{124}
	LT-V700F Twin Peaks	2005-04	ETX14
500cc	LT-A500 King Quad	2012-10	ETX14{124}
	LT-A500F QuadMaster	2001-00	ETX14
	LT-A500F Vinson - 4WD	2007-04	ETX14{124}
	LT-A500F Vinson - 4WD	2003-02	ETX14
	LT-F500F Vinson - w/MT	2007-04	ETX14{124}

{56} Hold-down modifications may be necessary. {124} Shipped with 17mm adapter that may be required for proper fit.

{146} Do NOT Use Height Adapter Supplied with Battery.

# APPLICATION DATA

CC	MODEL	YEAR	PREMIUM AGM Activated/ Ready to install	CC	MODEL	YEAR	PREMIUM AGM Activated/ Ready to install
<b>SUZUKI (Continued)</b>				<b>YAMAHA (Continued)</b>			
500cc	LT-F500F Vinson - w/MT	2003	ETX14	400cc	YFM400 Big Bear	2012-00	ETX20L
	LT-F500F-QuadRunner	2001-98	ETX14		YFM400F(A) Kodiak - w/AT	2006-03	ETX15
450cc	LT-A450X King Quad - 4WD	2011-07	ETX14		YFM400F(A) Kodiak - w/AT	2002-96	ETX20L
400cc	LT-A400 King Quad	2012-11	ETX14		YFM400FW Kodiak 4x4	1995-93	ETX15
	LT-A400, F Eiger	2009-02	ETX14	350cc	BW350 Big Wheel	1988-87	ETX12{56}
	LT-Z400 QuadSport	2012-03	ETX9		YFM350ER	1995-87	ETX15
300cc	LT-300E Quadrunner	1989-87	ETX15		YFM350FW Big Bear 4x4	1999-87	ETX15
	LT-F300F KingQuad	2002-99	ETX15		YFM350FX Wolverine	2010-06	ETX15
	LT-F300F KingQuad Canada or Optional US	2002-99	ETX18L{117}		YFM350G,FG Grizzly	2012-07	ETX15
280cc	LT-F4WDX King Quad	1998-91	ETX15		YFM350U Big Bear 4x2	1999-96	ETX15
	LT-F4WDX King Quad Canada or Optional US	1999-91	ETX18L{117}		YFM35B Bruin	2008-05	ETX15
250cc	LT-4WD Quadrunner	1999-87	ETX15	250cc	YFP350 Terra-Pro	1988	ETX15
	LT-4WD Quadrunner - Optional	1999-87	ETX18L{117}		YFM250 Bear Tracker	2004-99	ETX15
	LT-F250 Quadrunner	2002-88	ETX15		YFM250 Moto 4	1991-89	ETX15
	LT-F250 Quadrunner	1986-85	ETX18L{117}		YFM250B Big Bear	2010-07	ETX15
	LT-F250 Quadrunner - Optional	2001-88	ETX18L{117}		YFM250B Bruin	2006-05	ETX15
	LT-F250,F Ozark	2012-02	ETX12	230cc	YFM25X Bear Tracker	2002-99	ETX15
	LT-Z250 QuadSport	2011-04	ETX9		YFU1 Pro-Hauler	1989	ETX15
230cc	LT-230E Quadrunner	1993-87	ETX12	225cc	YFM225	1988-86	ETX15
<b>YAMAHA</b>					YTM225DR,DX	1986-83	ETX15
700cc	YFM700FG Grizzly	2012-07	ETX20L	200cc	YFM200,DX	1989-85	ETX15
660cc	YFM660 Grizzly	2008-02	ETX20L		YTM200	1985-83	ETX15
	YFM660R Raptor	2005-01	ETX14				
600cc	YFM600 Grizzly	2001-98	ETX20L				
550cc	YFM550 Grizzly	2012-09	ETX20L				
450cc	YFM Kodiak	2007-04	ETX20L				
	YFM450,FG Grizzly	2012-07	ETX20L				
	YFM450FX Wolverine	2009-06	ETX20L				

{56} Hold-down modifications may be necessary.

{117} Battery must be rotated for correct polarity. Hold-down modifications may be necessary. Top and front terminal mounts only.

# PERSONAL WATERCRAFT

# APPLICATION DATA

CC	MODEL	YEAR	PREMIUM AGM Activated/ Ready to install
<b>AQUA-JET</b>			
432cc	SX1 (All)	1990-89	ETX16{56}
430cc	SX1 (All)	1991	ETX16{56}
<b>ARCTIC CAT</b>			
1000cc	Tigershark (All Models)	1999-97	ETX15L
900cc	Tigershark (All Models)	1999	ETX15L
	Tigershark (All Models)	1996-95	ETX15L
770cc	Tigershark (All Models)	1999-96	ETX15L
640cc	Tigershark (All Models)	1999-93	ETX15L
<b>BRP-SEA-DOO</b>			
1500cc	All other models	2007-94	ETX16L{56}
	GTI, GTX, RXP, RXT, WAKE	2012-04	ETX30LA
	GTX 4-TEC,RXP	2007-02	ETX30LA
950cc	All Other Models	2004-97	ETX16L{56}
	GTX 4-TEC,RXP	2004-99	ETX30LA
780cc	All Other Models	2007-95	ETX16L{56}
	GTX 4-TEC,RXP	2002-96	ETX30LA
720cc	All Other Models	2005-95	ETX16L{56}
650cc	All Models	1993	ETX16L{56}
	All Other Models	1995-94	ETX16L{56}
	GTX 4-TEC,RXP	1995-94	ETX30LA
580cc	All Models	1993-88	ETX16L{56}
	All Other Models	1997-94	ETX16L{56}
	GTX 4-TEC,RXP	1993-92	ETX30LA
<b>HONDA</b>			
1470cc	AquaTrax F-15, 15X	2012-03	ETX20L
1200cc	AquaTrax F/R12, R-12X	2009-02	ETX20L
<b>KAWASAKI</b>			
1500cc	JT1500-A, STX, STX-15F	2012-04	ETX20L
	JT1500B, C, 250X, Ultra LX, 260(L)X, 300(L)X	2012-07	ETX20L
1200cc	JH1200-A, B Ultra 150	2005-99	ETX20L
	JT 1200-A,B, C, STX-R, STX-12F	2009-02	ETX20L
1100cc	JH1100 ZXi	2003-96	ETX20L
	JH1100-B Ultra 130	2004-01	ETX20L
	JT1100 STX	2003-97	ETX20L
900cc	JT900	2005-95	ETX20L
800cc	JS800 SX-R	2012-03	ETX20L
750cc	JH750,SS,ST, Xi	1999-92	ETX16L{56}
	JH750ST	1996	ETX16L{56}
	JS750 ST, Sxi	2002-95	ETX20L
650cc	JF,JL,JS 650	1996-86	ETX16L{56}
550cc	JS550	1995-86	ETX16L{56}
	JS550	1985-82	ETX16L{56}
440cc	JS440	1992-87	ETX16L{56}
	JS440	1986-77	ETX16L{56}

CC	MODEL	YEAR	PREMIUM AGM Activated/ Ready to install
<b>KAWASAKI (Continued)</b>			
400cc	JS400	1976	ETX16L{56}
300cc	JS300	1991-86	ETX16L{56}
<b>POLARIS</b>			
1200cc	Genesis	2001-99	ETX16L{56}
	Genesis i	2004-99	ETX16L{56}
	MSX 140	2004-03	ETX16L{56}
	Pro 1200	2001-00	ETX16L{56}
	SLX	2001-00	ETX16L{56}
	Virage TX	2001-00	ETX16L{56}
	Virage Txi	2002-01	ETX16L{56}
1050cc	SL 1050	1998-97	ETX16L{56}
	SLT-X	1999-96	ETX16L{56}
	SLX	1999	ETX16L{56}
900cc	SL 900	1997-96	ETX16L{56}
800cc	Octane	2004-02	ETX16L{56}
	SL 780	1997-96	ETX16L{56}
	SLT- 780	1997-96	ETX16L{56}
	SLX 780	1997-96	ETX16L{56}
	SLX Pro 785	2000-98	ETX16L{56}
	Virage i	2004-02	ETX16L{56}
750cc	MSX 110	2004-03	ETX16L{56}
	MSX 150	2004-03	ETX16L{56}
	SL 750	1995-94	ETX16L{56}
	SLT- 750	1995	ETX16L{56}
700cc	Freedom	2004-02	ETX16L{56}
	Hurricane	1997-96	ETX16L{56}
	SL 700	1998-97	ETX16L{56}
	SL 700 Deluxe	1998-96	ETX16L{56}
	SLH	2001-99	ETX16L{56}
	SLT-H	1999	ETX16L{56}
	Virage	2004-00	ETX16L{56}
650cc	SL 650	1995-94	ETX16L{56}
<b>YAMAHA</b>			
1800cc	FX, FZ	2012-09	ETX16L{56}
1200cc	All Wave Runner Models	2005-99	ETX16L{56}
1100cc	All Wave Runner Models	1998-91	ETX16L{56}
	VX	2012-09	ETX16L{56}
1000cc	All Wave Runner Models	1990-87	ETX16L{56}
800cc	All Wave Runner Models	2009-98	ETX16L{56}
760cc	All Wave Runner Models	2000-96	ETX16L{56}
700cc	All Wave Runner Models	2004-93	ETX16L{56}
	Superjet	2012-09	ETX16L{56}
	Superjet	2005-91	ETX16L{56}
650cc	All Wave Runner Models	1996-90	ETX16L{56}
	Superjet	1990	ETX16L{56}
500cc	All Wave Runner Models	1993-87	ETX16L{56}

{56} Hold-down modifications may be necessary.

# APPLICATION DATA

# SNOWMOBILES

CC	MODEL	YEAR	PREMIUM AGM Activated/ Ready to install	CC	MODEL	YEAR	PREMIUM AGM Activated/ Ready to install
<b>ARCTIC CAT</b>				<b>ARCTIC CAT</b>			
900cc	King Cat	2006-04	ETX18L	440cc	Panther, Puma	1993-89	ETX15L
	Mountain Cat 900	2004-02	ETX18L		Panther, Puma	1978-71	ETX15L
	ZR 900	2006-03	ETX18L		Prowler	1993-90	ETX15L
800cc	Mountain Cat 800	2004-01	ETX18L		Trail Cat 4000	1981	ETX15L
	Pantera 800	2004-02	ETX18L		VIP	1976-74	ETX15L
	Pantera 800	1998	ETX18L		Z 440	2007-94	ETX15
	ZL, ZR 800	2003-02	ETX18L		ZR 440	1993	ETX15L
700cc	Firecat	2006-03	ETX18L	400cc	Cheetah	1973-72	ETX15L
	Sabercat 700	2006-04	ETX18L		El Tigre	1976-73	ETX15L
	Wildcat	1992-91	ETX18L		Jag	1993-89	ETX15L
	Wildcat EFI	1993	ETX16L{56}		Jag	1985	ETX15L
650cc	Puma	1971	ETX15L		Panther, Puma	1973-71	ETX15L
	Wildcat	1990-87	ETX18L	370cc	Panther 370	2007-01	ETX15
600cc	Bearcat WT	2007-03	ETX18L		Z 370	2007-99	ETX15
	Firecat	2006-04	ETX18L	340cc	340 Z	1977	ETX15L
	Panther 660	2007-06	ETX18L		Bearcat 340	2000-95	ETX15
	Sabercat 600	2006-04	ETX18L		Cheetah	1994-92	ETX15L
	T600 Turbo, Touring, Trail	2007-02	ETX18L		Cheetah	1976-72	ETX15L
	Triple Touring 600	2001-99	ETX18L		El Tigre	1976-73	ETX15L
580cc	EXT	1994-93	ETX15L		Jag 340	1999-98	ETX15
	EXT	1991-89	ETX16L{56}		Jag 340	1991-87	ETX15L
	EXT Dlx EFI	1998-97	ETX18L		Jag 340	1980-77	ETX15L
	Pantera	1998-95	ETX18L		Lynx, Panther, Puma	2000-94	ETX15
	Pantera	1993	ETX15L		Lynx, Panther, Puma	1993-91	ETX15L
570cc	Bearcat 570	2010-04	ETX18L		Lynx, Panther, Puma	1980-71	ETX15L
	Mountain Cat 570	2004-03	ETX18L		Trail Cat 3000	1980-79	ETX15L
	Panther 570	2007-02	ETX18L	300cc	El Tigre	1976-74	ETX15L
	Z 570	2008-02	ETX18L		Lynx, Panther	1991	ETX15L
550cc	Bearcat WT	2007-03	ETX18L		Lynx, Panther	1976-71	ETX15L
	Cheetah 550	1994	ETX15	250cc	250 Z	1977	ETX15L
	Cheetah, Cougar	1990	ETX16L{56}		El Tigre	1973	ETX15L
	Cheetah, Cougar	1988-86	ETX16L{56}	120cc	F 120	2006	ETX16L{56}
	Cougar	1994-91	ETX15L		Z, ZR	2005-00	ETX15
	EXT	1994	ETX15L	60cc	Kitty Cat	2000-94	ETX15
	El Tigre	1990-86	ETX15L		Kitty Cat	1993-72	ETX15L
	El Tigre EXT	1992-91	ETX15L	<b>BRP-SKI-DOO</b>			
	Panther	1993	ETX15L	1500cc	Elite 1500	2006-04	ETX30LA{146}
500cc	Cheetah	1991	ETX15L	1200cc	GSX, GTX, MX Z	2011-09	ETX20L
	Cheetah, Cougar	1990-85	ETX16L{56}		Grand Touring	2012-10	ETX20L
	El Tigre	1985-84	ETX15L	1000cc	Expedition, Legend, Skandic	2006-03	ETX18L
	El Tigre	1981-77	ETX15L		ZX Types	2006-05	ETX20L
	Firecat	2006-03	ETX18L	800cc	All Models - thru '98	1998-94	ETX18L
	Pantera, Panther	1992-90	ETX15L		All Models - thru '98	1972-70	ETX18L
	Pantera, Panther	1986	ETX15L		All Models,CK3,4-Stroke Types	2006-05	ETX18L
	Pantera, Panther	1985-77	ETX16L{56}		All Models,CK3,4-Stroke Types	2004	ETX20L
	Z	2000-98	ETX15		All Models,CK3,4-Stroke Types	2003-99	ETX18L
440cc	440 Z	1977	ETX15L		Expedition, Legend, Skandic	2012-09	ETX20L
	Bearcat 440	2000-95	ETX15		GSX, GTX, MX Z	2012-09	ETX20L
	Cheetah	1994	ETX15L		GSX, GTX, MX Z	2006	ETX20L
	Cheetah	1978-72	ETX15L		GSX, GTX, MX Z	2004	ETX20L
	Cheetah, Cougar	1988-86	ETX16L{56}		Legend	2002	ETX18L
	Cougar	1994-93	ETX15L		Renegade, Summit	2012-04	ETX20L
	Cross Country Cat	1977	ETX15L		ZX Types	2006-02	ETX20L
	El Tigre	1988-87	ETX15L	700cc	All Models - thru '98	1998-93	ETX18L
	El Tigre	1980-73	ETX15L		All Models,CK3,4-Stroke Types	2004-99	ETX18L
	Jag	1993-86	ETX15L		Legend	2002	ETX18L
	Jag	1981-80	ETX15L		ZX Types	2003-02	ETX20L
	Jag Liquid	1996	ETX15	635cc	All Models - thru '98	1995-75	ETX18L
	Jag, Deluxe	1999-94	ETX15		All Models - thru '98	1972-70	ETX18L
	Lynx	1980-74	ETX15L	600cc	All Models - thru '98	1998-89	ETX18L
	Pantera	1991-87	ETX15L		All Models,CK3,4-Stroke Types	2008-99	ETX18L
	Pantera	1978-77	ETX15L		Expedition, Skandic, Summit	2012-09	ETX20L
	Pantera, Panther	1988-84	ETX16L{56}		GSX, GTX	2012-04	ETX20L
	Pantera, Panther	1981	ETX16L{56}		Legend	2002	ETX20L
	Panther 440	2003-94	ETX15				

{56} Hold-down modifications may be necessary. {146} Do NOT Use Height Adapter Supplied with Battery.

# SNOWMOBILES

# APPLICATION DATA

CC	MODEL	YEAR	PREMIUM AGM Activated/ Ready to install
<b>BRP-SKI-DOO (Continued)</b>			
600cc	ZX Types	2007-02	ETX20L
550cc	All Models - thru '98	1986-84	ETX18L
	All Models,CK3,4-Stroke Types	2008-03	ETX18L
	Expedition, Freestyle, Skandic	2012-09	ETX20L
	GSX, GTX, MX Z	2012-07	ETX20L
	Grand Touring, Renegade	2012-10	ETX20L
	Tundra	2012	ETX20L
	ZX Types	2006-03	ETX20L
500cc	All Models - thru '98	1998-79	ETX18L
	All Models,CK3,4-Stroke Types	2006-99	ETX18L
	Legend	2002	ETX20L
	ZX Types	2006-02	ETX20L
470cc	All Models - thru '98	1995-94	ETX18L
	All Models - thru '98	1992-90	ETX18L
	All Models - thru '98	1982-78	ETX18L
	All Models - thru '98	1975	ETX18L
440cc	All Models - thru '98	1998-95	ETX18L
	All Models - thru '98	1992-71	ETX18L
	All Models,CK3,4-Stroke Types	2006-99	ETX18L
	ZX Types	2003-02	ETX20L
400cc	All Models - thru '98	1975-70	ETX18L
380cc	All Models - thru '98	1998-80	ETX18L
	All Models,CK3,4-Stroke Types	2006	ETX18L
	All Models,CK3,4-Stroke Types	2004-99	ETX18L
	ZX Types	2006-02	ETX20L
340cc	All Models - thru '98	1980-70	ETX18L
300cc	All Models - thru '98	1979-70	ETX18L
	All Models,CK3,4-Stroke Types	2006-03	ETX18L
	Expedition, Freestyle, Skandic	2006	ETX20L
	Skandic	2010-09	ETX20L
270cc	All Models - thru '98	1998-86	ETX18L
	All Models - thru '98	1983	ETX18L
	All Models - thru '98	1981	ETX18L
	All Models,CK3,4-Stroke Types	2004-99	ETX18L
250cc	All Models - thru '98	1996-81	ETX18L
	All Models - thru '98	1979-75	ETX18L
120cc	ZX Types	2006	ETX20L
	ZX Types	2004-02	ETX20L

<b>KAWASAKI</b>			
550cc	All Models	1982	ETX18L
440cc	All Models	1982-77	ETX18L
340cc	All Models	1981-77	ETX18L

<b>POLARIS</b>			
900cc	900 Fusion, Switchback	2006-05	ETX15
	900 RMK	2006-05	ETX15
800cc	Indy Classic,Touring, XC	2009-99	ETX15
	Indy,Sport,Trail,Transport	1998-94	ETX15
	Rush, RMK, Pro, Assault, SWBK	2012-11	ETX20L
750cc	FS Wide Track	2012-10	ETX30LA{146}
	FS,FST	2010-06	ETX20L
	Indy,Sport,Trail,Transport	1993	ETX15
	Turbo LX, IQ	2012-08	ETX20L
	Turbo Switchback, Turbo Dragon	2010-06	ETX20L
700cc	Indy Classic,Touring, XC	2006-96	ETX15
	Indy,Sport,Trail,Transport	2001	ETX15
650cc	Indy Classic,Touring, XC	1992	ETX15
	Indy,Trail, Widetrack	1991-88	ETX18L
600cc	IQ Touring	2010-08	ETX15
	Indy Classic,Touring, XC	2009-93	ETX15
	Indy,Trail, Widetrack	1987-82	ETX18L
	Rush, IQ, Shift, Switchback	2012-09	ETX20L
	Turbo LX	2010	ETX20L
	Wide Track	2012-10	ETX30LA{146}

CC	MODEL	YEAR	PREMIUM AGM Activated/ Ready to install
<b>POLARIS (Continued)</b>			
550cc	IQ, LXT, Shift	2012-11	ETX20L
	Indy Classic,Touring, XC	2006-00	ETX15
	Indy,Sport,Trail,Transport	2008-05	ETX15
	Indy,Sport,Trail,Transport	2001	ETX15
	Indy,Sport,Trail,Transport	1999	ETX15
544cc	Trail, Trail Touring	2011-09	ETX15
500cc	Centurion	1980	ETX15
	Indy Classic,Touring, XC	2006-92	ETX15
	Indy,Sport,Trail,Transport	1999-92	ETX15
	Indy,Trail, Widetrack	2011-86	ETX18L
440cc	Galaxy 340, 440	1980	ETX15
	Indy Classic,Touring, XC	2005-04	ETX15
	Indy Classic,Touring, XC	2000-93	ETX15
	Indy,Sport,Trail,Transport	2003-92	ETX15
	Indy,Trail, Widetrack	1991	ETX18L
	Indy,Trail, Widetrack	1989-82	ETX18L
	Sprint,Star	1985	ETX16{56}
400cc	Indy,Trail, Widetrack	1991-85	ETX18L
340cc	Apollo	1980	ETX15
	Galaxy 340, 440	1980	ETX15
	Indy Classic,Touring, XC	2006-03	ETX15
	Indy,Indy Lite	2003-92	ETX15
	Indy,Trail, Widetrack	1991-88	ETX18L
	Indy,Trail, Widetrack	1983-82	ETX18L
	Sprint,Star	1990-86	ETX16{56}
	TX,C,L	1980	ETX18L
250cc	Gemini 250	1980	ETX15
	Indy StarLite	1995-92	ETX15
	Indy StarLite	1991	ETX18L
	Sprint,Star	1984-82	ETX16{56}
120cc	120 Pro X	2006	ETX20L
	120 Pro X	2005-04	ETX15
	Indy,Indy Lite	2003-00	ETX15

<b>SCORPION</b>			
440cc	Sting 440	1980	ETX15L
	Whip 440	1980	ETX15L
400cc	Sting 400	1980	ETX15L
340cc	Whip 340	1980	ETX15L
290cc	Lil' Whip	1980	ETX15L

<b>YAMAHA</b>			
1049cc	Nytro	2012-10	ETX20L
	RS Rage,Vector,Venture	2012-05	ETX20L
	VK Professional	2012-06	ETX20L
1000cc	Apex	2012-06	ETX14
	Attak	2006	ETX14
	Nytro	2009-06	ETX20L
	RS1000S, GT, RS	2009	ETX20L
	RX1000R, RX	2005-03	ETX20L
973cc	Vector	2009	ETX20L
	Viking	2009	ETX20L
800cc	Mountain Max 800	1997	ETX18L
	VX800 V-Max	1996-95	ETX18L
750cc	VX750 V-Max	1998-92	ETX18L
700cc	Mountain Max 700	2004-97	ETX18L
	SX, SXV	2006-98	ETX18L
	VT700 Venture	2004-98	ETX18L
	VX700 V-Max,DeLuxe	2002-98	ETX18L
600cc	Mountain Max 600	2002-99	ETX18L
	SRX600	1999	ETX18L
	SX,SXV	2006-00	ETX18L
	VT600 Venture	2006-99	ETX18L
	VX600 V-Max	2003-99	ETX18L
540cc	Excel V	1980	ETX18L
	SRV 540	1981-80	ETX15L

{56} Hold-down modifications may be necessary. {146} Do NOT Use Height Adapter Supplied with Battery.

# APPLICATION DATA

# SNOWMOBILES

CC	MODEL	YEAR	PREMIUM AGM Activated/ Ready to install	CC	MODEL	YEAR	PREMIUM AGM Activated/ Ready to install
<b>YAMAHA (Continued)</b>				<b>YAMAHA (Continued)</b>			
500cc	PZ500 Phazer	2012-09	ETX14	300cc	ET300 Enticer	1984-83	ETX15L
	SX,SXV	2001-00	ETX18L		ET300 Enticer	1981-80	ETX15L
	Venture Lite	2012-09	ETX14		ET300 Enticer	1979	ETX18L
480cc	PZ480E Phazer Deluxe,LE,S,II	1998-84	ETX15L		GP,GS,SM300	1977-75	ETX18L
	VT480 VentureGT, XL	1998-91	ETX15L	250cc	ET250	1981	ETX15L
440cc	Enticer 440	1980	ETX15L		ET250	1979-77	ETX18L
	Exciter 440	1981	ETX15L		Enticer 250	1980	ETX15L
	Exciter 440	1976	ETX18L	125cc	SV125 Sno Sport	1991-90	ETX15L
	GP440	1977-76	ETX18L				
	Prestige 440	1976	ETX18L				
	SS,SRX	1981-80	ETX15L				
	SS,SRX	1979-76	ETX18L				
410cc	ET410TR Enticer	2004-02	ETX18L				
	ET410TR Enticer	1995-89	ETX18L				
340cc	CS340 Ovation	1999-89	ETX15L				
	EC340E	1981	ETX15L				
	ET340 Enticer	1988-82	ETX15L				
	ET340 Enticer	1980	ETX15L				
	ET340 Enticer	1979	ETX18L				
	ET340 Enticer	1978	ETX15L				
	EX340 Excel, III	1988-83	ETX15L				
	EX340 Excel, III	1979	ETX15L				
	Exciter 340	1976	ETX18L				
	GS340	1977-76	ETX18L				
	SRX340	1976	ETX18L				

# SCOOTER / MOPED

# APPLICATION DATA

CC	MODEL	YEAR	PREMIUM AGM Activated/ Ready to install
<b>APRILIA</b>			
500cc	Scarabeo	2011-09	ETX12
250cc	Sport City	2012-09	ETX12
<b>E-TON</b>			
150cc	Beamer R4-150	2012-10	ETX9
	Matrix R4-150	2012-10	ETX9
<b>HONDA</b>			
250cc	CH250 Elite	1990-85	ETX12
	CN250 Helix	2007-86	ETX12
150cc	CH150 Elite	1987	ETX9
125cc	FES125	ALL	ETX9
	Pantheon 125	ALL	ETX9
<b>HYOSUNG</b>			
250cc	NS3-250	2012-09	ETX9
<b>KYMCO</b>			
500cc	Xciting 500i	2012-09	ETX14
300cc	Downtown 300	2012	ETX12
250cc	People 250	2011-09	ETX12
	Venox250	2011-09	ETX9
	Xciting 250i	2011-10	ETX12

CC	MODEL	YEAR	PREMIUM AGM Activated/ Ready to install
<b>PIAGGIO</b>			
500cc	BV500	2012-08	ETX14
	MP3 500	2012-08	ETX14
400cc	MP3 400	2012-08	ETX14
250cc	BV250	2011-08	ETX14
	MP3 250	2012-08	ETX14
<b>PIAGGIO (VESPA)</b>			
300cc	GTS, GTV 250	2010	ETX14
	GTS300	2012-10	ETX14
150cc	LX150 4T	2012-10	ETX12
<b>PIAGGIO - GILERA</b>			
500cc	Fuoco 500ie	2012-10	ETX14
	Nexus 500ie	2010	ETX15L
300cc	Nexus 300ie	2011-10	ETX14
200cc	Runner 200	2012-10	ETX12
125cc	Runner 125	2012-10	ETX14
<b>SUZUKI</b>			
650cc	AN650 Burgman	2012-03	ETX14
<b>SYM</b>			
250cc	RV250	2012-09	ETX12
200cc	HD	2012-09	ETX9
125cc	HD 125	2011-10	ETX9



# APPLICATION DATA

# UTILITY VEHICLE

CC	MODEL	YEAR	PREMIUM AGM Activated/ Ready to install
<b>ARCTIC CAT</b>			
1000cc	Prowler 1000	2012-10	ETX30LA{146}
	Wildcat	2012	ETX30LA{146}
700cc	700 GT	2011	ETX18L
	Advantage Camo	2011	ETX18L
	Prowler	2012-10	ETX30LA{146}
	Prowler	2009	ETX18L
650cc	Prowler	2010-06	ETX18L
550cc	Prowler	2012-10	ETX30LA{146}
	Prowler	2009	ETX18L
<b>BRP (CAN-AM)</b>			
1000cc	Commander	2012-11	ETX20L
800cc	Commander	2012-11	ETX20L
<b>HONDA</b>			
700cc	MUV700 Big Red	2012-08	ETX14
<b>KAWASAKI</b>			
750cc	Teryx - Canada	2012-08	ETX14
620cc	Advantage Classic	2007-03	ETX20L
	KAF620 Mule 2500,2510,2520	2000-98	ETX16L{56}
	KAF620 Mule 2500,2510,2520	1996-93	ETX16L{56}
	KAF620 Mule 3000, 3010, 3020	2007-01	ETX20L
	KAF620F, Mule 4010 - Canada	2012-09	ETX20L
610cc	KAF610 Mule Camo	2012-07	ETX15
540cc	KAF540 Mule 2010,2020,2030	1993-91	ETX16L{56}
450cc	KAF450 Mule 1000	1996-91	ETX16L{56}
400cc	KAF400 Mule, 600, 610	2012-05	ETX15
300cc	KAF300, Mule 500, 520, 550	2001-91	ETX15

CC	MODEL	YEAR	PREMIUM AGM Activated/ Ready to install
<b>KYMCO</b>			
500cc	UXV500	2012-10	ETX20L
<b>POLARIS</b>			
900cc	Ranger RZR	2012-11	ETX30LA{146}
800cc	RZR	2012-08	ETX20L
	Ranger	2012-10	ETX30LA{146}
	Ranger RZR 4	2012-10	ETX30LA{146}
700cc	Ranger	2010-06	ETX30LA{146}
500cc	Ranger 4x4	2012-11	ETX15
	Ranger 4x4	2010-05	ETX30LA{146}
	Ranger 6x6, 4x4	2004-98	ETX30LA{146}
425cc	Ranger	2003-02	ETX30LA{146}
400cc	Ranger	2012-11	ETX15
170cc	Ranger RZR	2012-10	ETX12
<b>SUZUKI</b>			
620cc	QUV620F	2005	ETX20L

{56} Hold-down modifications may be necessary. {146} Do NOT Use Height Adapter Supplied with Battery.



# Batteries are Recyclable!

Imagine the environmental damage that can be caused by carelessly discarding 18 pounds of lead, two pounds of plastic, and a gallon of acid: the contents of a lead-acid battery. Now imagine that damage compounded by 75,000,000: the approximate number of lead-acid batteries available for recycling each year in the United States.

Fortunately, used lead-acid batteries can be safely recycled. In fact, they have been recycled since the 1920s, and today these batteries have a

higher recycling rate than other waste products such as aluminum, paper, and beverage containers made of glass or plastic, just to name a few. Over 98% of all used batteries are recycled today.

This is an EPA-permitted recycling system, which is important for you to know because hazardous disposal laws place heavy penalties on offenders and considerable paperwork burden on everyone. You can be assured that your scrap is being recycled in an environmentally safe manner.



**S**crap lead-acid batteries are disassembled in a ventilated battery breaker, where the lead, plastic and acid are safely separated.

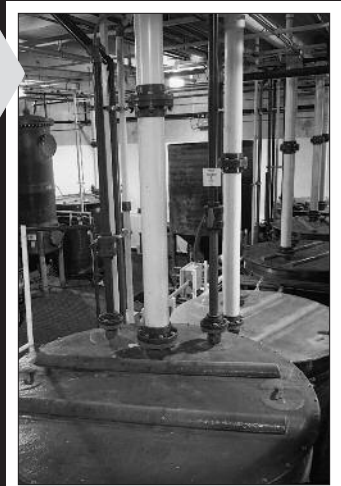


**T**he lead is processed and smelted in the reverberatory furnace, producing metal which goes to the refinery. There it is placed in kettles, combined with reagents, and alloyed into lead for use in new batteries.

**T**he recycled plastic from the battery cases and covers is reclaimed in the plastic recovery plant, where it is cleaned and separated into polypropylene and lead-bearing materials. Polypropylene is recycled to make cases and covers for new batteries and other plastic products.

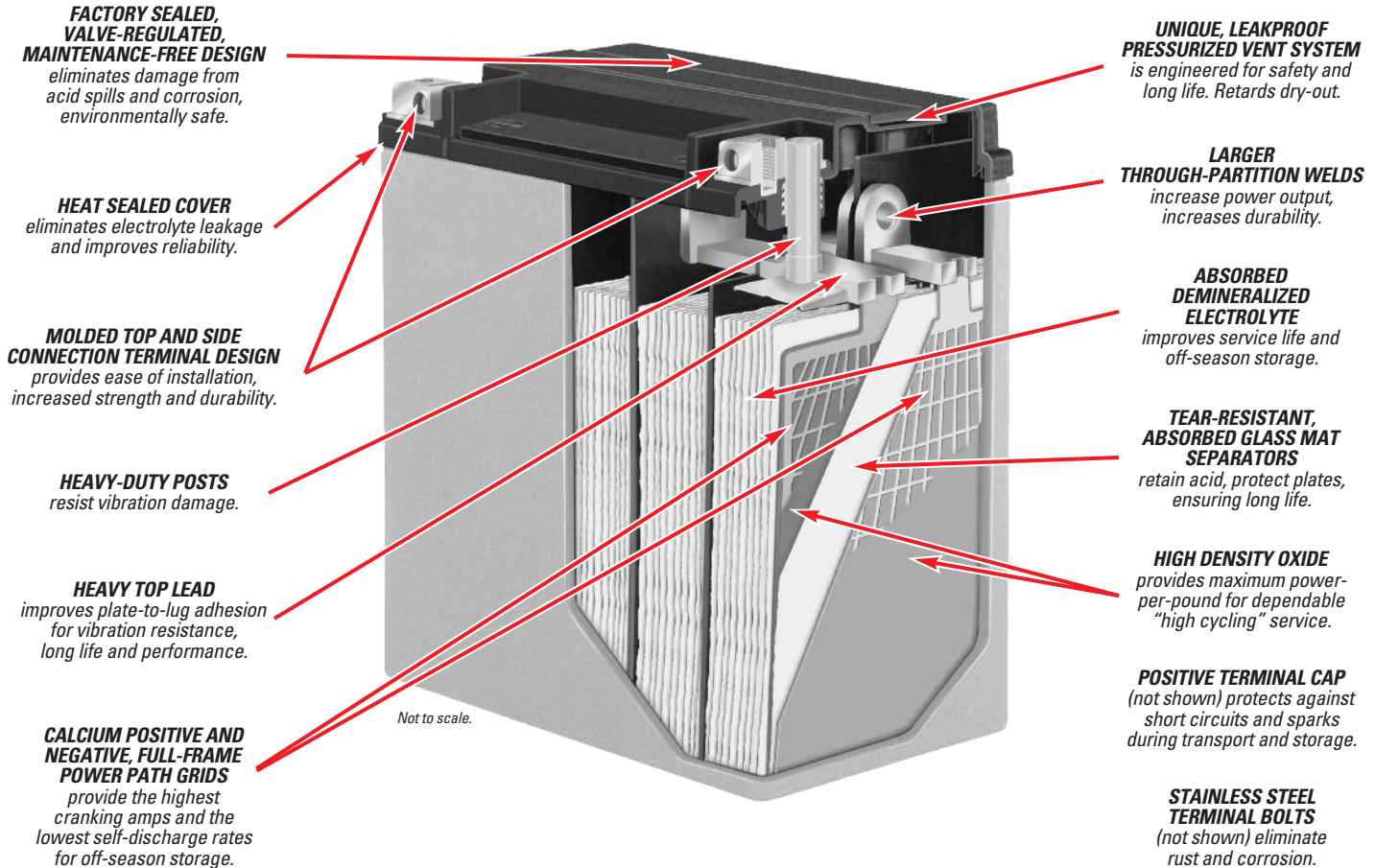


**B**attery acid is recycled in a patented acid reclamation plant. This one-of-a-kind, computer-controlled facility allows recycling of used battery acid for use in the production of new batteries. Tests show no difference in the performance of batteries using recycled sulfuric acid when compared to batteries using new acid.



# Premium AGM Power Sports Batteries

Premium quality, specially designed Absorbed Glass Mat (AGM) batteries are manufactured under strict quality controls to assure superior performance and long life. The AGM design allows easy installation without the worry of acid spills and damage to equipment.



Distributed by / Distribué par / Distribuido por  
CQ Sourcing, Inc., 4721 Hargrove Road, Raleigh, NC 27616



**CALIFORNIA  
PROPOSITION 65  
WARNING:**

Batteries, battery posts, terminals and related accessories contain lead and lead compounds, and other chemicals known to the State of California to cause cancer and birth defects or other reproductive harm. **WASH HANDS AFTER HANDLING! BATTERIES PRODUCE EXPLOSIVE GASES. FOLLOW ALL SAFETY INSTRUCTIONS.**

**PROPOSITION 65  
AVERTISSEMENT  
DE L'ÉTAT DE LA  
CALIFORNIE :**

Les batteries, les bornes et les cosses de batterie ainsi que les accessoires contiennent du plomb, des composants de plomb et d'autres produits chimiques qui, selon l'État de la Californie, causent le cancer, des anomalies congénitales et des problèmes reproductifs. **LAVEZ LES MAINS APRÈS MANIPULATION. LES BATTERIES PRODUISENT DES GAZ EXPLOSIFS. SUIVEZ TOUTES LES INSTRUCTIONS DE SÉCURITÉ.**

**PROPOSTA 65  
DEL ESTADO  
DE CALIFORNIA  
ADVERTENCIA:**

Las baterías, los postes de las baterías, sus terminales y sus accesorios contienen plomo, compuestos de plomo y otros químicos, que de acuerdo al Estado de California pueden causar cáncer, defectos de nacimiento u otros daños en el sistema reproductivo. **¡LÁVESE LAS MANOS DESPUÉS DE USAR ESTOS PRODUCTOS! LAS BATERÍAS PRODUCEN GASES EXPLOSIVOS. SIGA LAS INSTRUCCIONES DE SEGURIDAD.**