

HAND TOOLS

TOOLS STORAGE

- Trigger Lock Drawer System Keeps Drawers in Place
- Ball Bearing Drawer Slides with Auto Return
- Drawer Liners in All Drawers (Black Foam)
- Brushed Aluminum Handles and Drawer Pulls
- Barrel Style Lock
- Cart Body Made of 20-ga Steel
- Drawers Made of 22-ga Steel

Gear Wrench 32" 2 Drawer XL Series Black & Silver Tool Cart CPM 83152



- Trigger Lock Drawer System Keeps Drawers in Place
- Ball Bearing Drawer Slides with Auto Return
- Drawer Liners in All Drawers (Black Foam)
- Brushed Aluminum Handles and Drawer Pulls
- Barrel Style Lock
- Cart Body Made of 20-ga Steel
- Drawers Made of 22-ga Steel

Gear Wrench 32" 4 Drawer XL Series Black & Silver Tool Cart CPM 83153



- Magnets allow case to be fixed to any ferrous surface.
- Built-in hooks for hanging case
- Impact-resistant material helps to prevent breakage

DeWalt Tools 15 Pc. Magnetic ToughCase SBD DWMT15



- Organizes 1/4" Fractional and Metric Sockets.
- Twenty-six socket compartments allow you to keep your 1/4" standard and deep sockets in one convenient holder. Holds sockets up to 5/8" or 15 mm. Design of holders leaves sockets exposed for easy identification. Powerful magnets securely hold sockets in tray, and tray to any steel surface. Made of strong ABS plastic.

Lisle 1/4" Magnetic Socket Holder (Red) LST 40120



- Organizes 3/8" Fractional and Metric Sockets.
- Twenty-eight socket compartments that allow you to keep your 3/8" standard and deep sockets in one convenient holder.
- Holds sockets up to 1" or 24 mm.
- Design of holders leaves sockets exposed for easy identification.
- Powerful magnets securely hold sockets in tray, and tray to any steel surface.
- Made of strong ABS plastic.
- Fits most 3/8" socket sets.

Lisle 3/8" Magnetic Socket Holders (Red) LST 40200



- Organizes 1/2" Chrome and Impact Sockets.
- Twenty-two socket compartments allow you to keep your 1/2" standard and deep sockets in one convenient holder.
- Holds sockets up to 1" or 20 mm.
- Design of holders leaves sockets exposed for easy identification.
- Powerful magnet holds sockets in tray.
- Rubber feet protect tool box from scratching.
- Made of strong ABS plastic.
- Made especially for impact socket sets.

Lisle 1/2" Magnetic Socket Holder (Red) LST 40900

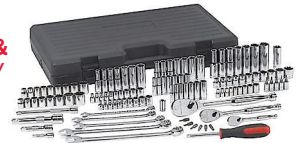


HAND TOOLS

TOOL SETS

- Blow-mold case for storage

Gear Wrench 118-Piece 1/4", 3/8" & 1/2" Drive 6 and 12-Point Standard/Deep Socket Set SAE/ Metric AHT 83001D



Gear Wrench 3/8" Drive Universal Set - 26 Pc. AHT 40426A



- Contents: 1/4" Drive 4" Extension Bar; 20 - 1/4" Drive 6 Point Sockets: SAE: 5/32", 3/16", 7/32", 1/4", 9/32", 5/16", 11/32", 3/8", 7/16", 1/2" Metric: 4mm, 5mm, 6mm, 7mm, 8mm, 9mm, 10mm, 11mm, 12mm, 13mm; 1/4" Drive Ratchet

Gear Wrench 1/4" Drive Socket Set, SAE/Metric, 22 Piece AHT 8800A



- Full polish chrome quick-release ratchet
- Knurled full polish chrome extensions
- Sockets feature Surface Drive® Technology to reduce fastener rounding
- Full polish chrome sockets with large hard stamp size markings

Gear Wrench 3/8" Drive Socket Set, SAE/Metric, 20 Piece AHT 8801A



- SAE and Metric, standard and deep sockets

TEQ Correct 1/4", 3/8 & 1/2" Drive Combination Socket Set, 152 Piece AHT TEQ336



- SAE and Metric, standard and deep sockets

TEQ Correct 1/4" & 3/8" Drive Combination Socket Set, 80 Piece AHT TEQ335



* Disclaimer: Not all products listed in this catalog are stocked in all stores or DC locations. If not stocked, they are available via special order.

- SAE and Metric, standard and deep sockets

TEQ Correct 3/8" Drive Combination Socket Set, 47 Piece AHT TEQ334



- Black chrome plating resists corrosion
- Heavy-duty construction
- Laser etched markings

AutoCraft Black Chrome Socket Set, 48 Piece AHT AC846



TEQ Correct 1/4" Drive Socket Set, 38 Piece AHT TEQ261



- Chrome-plated finish resists corrosion
- Spring-loaded ball bearing securely holds sockets in place
- Durable reusable storage box

AutoCraft 1/4" Drive Ratchet Socket Set, 22 Piece AHT AC333



- Chrome-plated finish resists corrosion
- Spring-loaded ball bearing securely holds sockets in place
- Durable reusable storage box

AutoCraft 3/8" Drive Ratchet Socket Set, 21 Piece AHT AC332



- Chrome-plated finish resists corrosion
- Spring-loaded ball bearing securely holds sockets in place
- Durable reusable storage box

AutoCraft 1/2" 19 Pc. Drive Ratchet Socket Set AHT AC331



- Chrome-plated finish resists corrosion

AutoCraft 1/2" 12 Pc. Ratchet Socket Set AHT AC330



- Chrome-plated finish resists corrosion

AutoCraft 1/2" 12 Pc. Ratchet Socket Set SAE AHT AC329



- (3) Universal Joints: 1/4", 3/8", 1/2". (4) Adapters: 1/2"(F) x 3/8"(M), 3/8"(F) x 1/4"(M), 1/4"(F) x 3/8"(M), 3/8"(F) x 1/2"(M). (3) 3/8" Drive Extension Bar: 3", 6", 10"
- Tempered chrome-vanadium steel
- Mirror-polished and chrome-plated for corrosion protection

AutoCraft Socket Accessory Set, 10 Piece AHT AC859



HAND TOOLS WRENCHES

- Quick-release button

Gear Wrench 1/4" Drive Teardrop Ratchet AHT 81014



- Tempered chrome-vanadium steel
- Chrome-plated finish resists corrosion

AutoCraft 1/4" Drive Quick Release Ratchet AHT AC303



- Tempered chrome-vanadium steel
- Chrome-plated finish resists corrosion

AutoCraft 1/4" Drive Quick Release Ratchet AHT AC306



- 120 Positions, 3° Ratcheting Arc
- The Gear is Alternately Engaged by the Double-Stacked Pawls which give a 3° Swing Arc for Faster Work
- Highly Visible On/Off Markings on the Head
- Enclosed Head Design for Extreme Resistance to Dirt Infiltration
- Double-Stacked Pawls Engage a 60-tooth Gear Providing Exceptional Strength, Exceeding ASME Specifications
- Teardrop Low Profile Head and Flush Mounted On/Off Switch Allow Better Access in Tight Spaces
- Longer Reach Handle to Access Hard to Reach Fasteners
- Full Polish Chrome Handle
- Meets or Exceeds ASME B107.10

Gear Wrench 3/8" 120XP Teardrop Ratchet AHT 81211P



- Quick-Release Drive Tool Retention
- Teardrop Shaped Head
- Full Polish Chrome Handle
- Bright Chrome Finish
- Meets or Exceeds ASME B107.10

Gear Wrench 3/8" Drive Flex Head Ratchet AHT 81219



- Quick-Release Drive Tool Retention
- Teardrop Shaped Head
- Full Polish Chrome Handle
- Bright Chrome Finish
- Meets or Exceeds ASME B107.10

Gear Wrench 3/8" Drive Teardrop Ratchet AHT 81218



- Low profile and performance head
- Flush mounted lever
- Longer than most ratchets for added leverage

Gear Wrench 3/8" Drive Teardrop Ratchet AHT 81211F



* Disclaimer: Not all products listed in this catalog are stocked in all stores or DC locations. If not stocked, they are available via special order.

- Tempered chrome-vanadium steel
- Chrome-plated finish resists corrosion

AutoCraft 3/8" Drive Quick Release Ratchet AHT AC304



- Tempered chrome-vanadium steel
- Chrome-plated finish resists corrosion

AutoCraft 3/8" Drive Quick Release Ratchet AHT AC307



- 120 Positions, 3° Ratcheting Arc
- The Gear is Alternately Engaged by the Double-Stacked Pawls which give a 3° Swing Arc for Faster Work
- Highly Visible On/Off Markings on the Head
- Enclosed Head Design for Extreme Resistance to Dirt Infiltration



Gear Wrench 1/2" Drive 120XP Ratchet AHT 81304P

- Low profile and performance head
- Flush mounted lever
- Longer than most ratchets for added leverage



Gear Wrench 1/2" Drive Teardrop Ratchet AHT 81304F

- Tempered chrome-vanadium steel
- Chrome-plated finish resists corrosion

AutoCraft 1/2" Drive Quick Release Ratchet AHT AC308



- Tempered chrome-vanadium steel
- Chrome-plated finish resists corrosion

AutoCraft 1/2" Drive Quick Release Ratchet AHT AC305



Gear Wrench 3/4" Drive Ratchet, 20" AHT 88800

HAND TOOLS

TORQUE WRENCHES

- Torque adjustment with manual locking in front of the handle
- Fine scale graduation: 0.1 Nm
- Sensitive & sound signals when reaches the torque
- Provided with ISO 6789 calibration certificate

Chicago Pneumatic 1/4" Drive Torque Wrench, 50-250 in-lbs. Torque Range CTO CP8905



- Scale in Nm
- Torque adjustment with manual locking in front of the handle
- Fine scale graduation: 0.5 Nm
- Sensitive & sound signals when reaches the torque
- Provided with ISO 6789 calibration certificate

Chicago Pneumatic 3/8" Drive Torque Wrench, 15-75 ft-lbs. Torque Range CTO CP8910



- Dual scale measurement adjustments in both Inch-Pound and Newton meter.
- Audible click is generated when you've reached the desired torque setting.
- Patented torque adjusting lock/unlock collar.
- Internal torque mechanism is manufactured of high grade spring steel.
- Returning wrench to lowest setting after each job ensures accuracy and long life.

Performance Tool 3/8" Drive 100 ft-lbs. Torque Wrench WIL M198



- Professional style.
- Chrome plated alloy steel.
- Compact size for tight spots.
- Ratchet style with engraved scale.
- Nickel chrome plated alloy steel.

Performance Tool 3/8" Drive Click Torque Wrench WIL M202-P



- Scale in ft-lbs and Nm
- Torque adjustment with manual locking in front of the handle
- Fine scale graduation
- Sensitive & sound signals when reaches the torque
- Provided with ISO 6789 calibration certificate

Chicago Pneumatic 1/2" Drive Torque Wrench, 30-150 ft-lbs. Torque Range CTO CP8915



- Scale in ft-lbs and Nm
- Torque adjustment with manual locking in front of the handle
- Fine scale graduation
- Sensitive & sound signals when reaches the torque
- Provided with ISO 6789 calibration certificate

Chicago Pneumatic 1/2" Drive Torque Wrench, 50-250 ft-lbs. Torque Range CTO CP8917



- Dual scale measurement adjustments in both Inch-Pound and Newton meter.
- Audible click is generated when you've reached the desired torque setting.
- Patented torque adjusting lock/unlock collar.
- Internal torque mechanism is manufactured of high grade spring steel.
- Returning wrench to lowest setting after each job ensures accuracy and long life.

Performance Tool 1/2" Drive 250 ft-lbs Torque Wrench WIL M199



- Professional style.
- Chrome plated alloy steel.
- Compact size for tight spots.
- Ratchet style with engraved scale.
- Nickel chrome plated alloy steel.

Performance Tool 1/2" Drive Click Torque Wrench WIL M200DB



- Scale in ft-lbs and Nm
- Torque adjustment with manual locking in front of the handle
- Fine scale graduation
- Sensitive & sound signals when reaches the torque
- Provided with ISO 6789 calibration certificate

Chicago Pneumatic 3/4" Drive Torque Wrench, 100-550 ft-lbs. Torque Range CTO CP8920



- Scale in Nm
- Torque adjustment with manual locking in front of the handle
- Fine scale graduation: 5 Nm
- Sensitive & sound signals when reaches the torque
- Provided with ISO 6789 calibration certificate

Chicago Pneumatic 1" Drive Torque Wrench, 100-750 ft-lbs. Torque Range CTO CP8925



* Disclaimer: Not all products listed in this catalog are stocked in all stores or DC locations. If not stocked, they are available via special order.

HAND TOOLS

FLEX HANDLES

- Full polish

Gear Wrench 1/2" Drive Flex Handle 15" AHT 81307

Gear Wrench 1/2" Drive Flex Handle 24" AHT 81308D/81308

Gear Wrench 1/2" Drive Flex Handle AHT 87852

Image Shown: 81307



- Full polish

Image Shown: 81221

Gear Wrench 3/8" Drive Flex Handle 12" AHT 81221

Gear Wrench 3/8" Drive Flex Handle 18" AHT 87802



- Full Polish Chrome Finish
- Ergonomic Handle

Gear Wrench 3/4" Drive Breaker Bar Flex-Handle, 19" AHT 81404



HAND TOOLS

SOCKET SETS

- Color-coded plastic clip rail for storage

Gear Wrench 13-Piece 1/4" Drive 6-Point Deep Socket Set (Metric)
AHT 80304D/80304



- Color-coded plastic clip rail for storage

Gear Wrench 13-Piece 1/4" Drive 6-Point Standard Socket Set (Metric)
AHT 80302DD/80302D



- SAE: 3/16", 7/32", 1/4", 9/32", 5/16", 11/32", 3/8", 7/16", 1/2"
- Chrome-plated finish resists corrosion
- Durable reusable socket rail



AutoCraft 1/4" Drive 9 Pc. Socket Set AHT AC317

- SAE: 3/16", 7/32", 1/4", 9/32", 5/16", 11/32", 3/8", 7/16", 1/2"
- Chrome-plated finish resists corrosion
- Durable reusable socket rail



AutoCraft 1/4" Drive 9 Pc. Socket Set AHT AC319

- Metric: 4mm, 5mm, 6mm, 7mm, 8mm, 9mm, 10mm, 11mm, 12mm, 13mm
- Chrome-plated finish resists corrosion
- Durable reusable socket rail



AutoCraft 1/4" Drive 10 Pc. Socket Set AHT AC318

- Metric: 4mm, 5mm, 6mm, 7mm, 8mm, 9mm, 10mm, 11mm, 12mm, 13mm
- Chrome-plated finish resists corrosion
- Durable reusable socket rail



AutoCraft 1/4" Drive 10 Pc. Socket Set AHT AC320

- Color-coded plastic clip rail for storage

Gear Wrench 14-Piece 3/8" Drive 6-Point Deep Socket Set (Metric)
AHT 80554D/80554



- Color-coded plastic clip rail for storage

Gear Wrench 14-Piece 3/8" Drive 6-Point Standard Socket Set (Metric)
AHT 80552D/80552



- Large hard-stamped identification
- Entry angle guides fastener

Gear Wrench 3/8" Drive Flex Socket Set, SAE AHT 80564D/80564



- Large hard-stamped identification
- Entry angle guides fastener

Gear Wrench 3/8" Drive Flex Socket Set, Metric AHT 80565D/80565



- SAE: 1/4", 5/16", 3/8", 7/16", 1/2", 9/16", 5/8", 11/16", 3/4"
- Chrome-plated finish resists corrosion
- Durable reusable socket rail



AutoCraft 3/8" Drive 9 Pc. Socket Set AHT AC321

- Metric: 8mm, 10mm, 11mm, 12mm, 13mm, 14mm, 15mm, 17mm, 19mm
- Chrome-plated finish resists corrosion
- Durable reusable socket rail



AutoCraft 3/8" Drive 9 Pc. Socket Set AHT AC322

- SAE: 1/4", 5/16", 3/8", 7/16", 1/2", 9/16", 5/8", 11/16", 3/4"
- Chrome-plated finish resists corrosion
- Durable reusable socket rail



AutoCraft 3/8" Drive 9 Pc. Socket Set AHT AC323

- Metric: 8mm, 10mm, 11mm, 12mm, 13mm, 14mm, 15mm, 17mm, 19mm
- Chrome-plated finish resists corrosion
- Durable reusable socket rail



AutoCraft 3/8" Drive 9 Pc. Socket Set AHT AC324

- Color-coded plastic clip rail for storage

Gear Wrench 13-Piece 1/2" Drive 12-Point Standard Socket Set (Metric)
AHT 80710DD/80710D



- Color-coded plastic clip rail for storage

Gear Wrench 10-Piece 1/2" Drive 12-Point Deep Socket Set (Metric)
AHT 80712D/80712



- SAE: 1/2", 9/16", 5/8", 11/16", 3/4", 13/16", 7/8", 15/16"
- Chrome-plated finish resists corrosion
- Durable reusable socket rail



AutoCraft 1/2" Drive 8 Pc. Socket Set AHT AC327

* Disclaimer: Not all products listed in this catalog are stocked in all stores or DC locations. If not stocked, they are available via special order.

- SAE: 1/2", 9/16", 5/8", 11/16", 3/4", 13/16", 15/16", 7/8"
- Chrome-plated finish resists corrosion
- Durable reusable socket rail



AutoCraft 1/2" Drive 8 Pc. Socket Set AHT AC325

- Metric: 10mm, 12mm, 13mm, 15mm, 17mm, 18mm, 19mm, 22mm
- Chrome-plated finish resists corrosion
- Durable reusable socket rail



AutoCraft 1/2" Drive 8 Pc. Socket Set AHT AC326

- Metric: 10mm, 12mm, 13mm, 15mm, 17mm, 18mm, 19mm, 22mm
- Chrome-plated finish resists corrosion
- Durable reusable socket rail



AutoCraft 1/2" Drive 8 Pc. Socket Set AHT AC328

HAND TOOLS

SOCKETS

Image Shown: 80350

- Large hard-stamped identification
- Double line (SAE) and knurled line (MM) for easy identification of standard and metric sockets
- Entry angle guides fastener



Gear Wrench 3/8" Drive 6-Point Standard SAE Sockets AHT

1/4" 80350	9/16" 80355	13/16" 80359
5/16" 80351	11/16" 80357	7/8" 80360
1/2" 80354	3/4" 80358	1" 80362

Gear Wrench 3/8" Drive 6-Point Standard Metric Sockets AHT

8 mm 80376	14 mm 80382	18 mm 80386
10 mm 80378	15 mm 80383	19 mm 80387
12 mm 80380	16 mm 80384	21 mm 80331
13 mm 80381	17 mm 80385	22 mm 80332

Image Shown: 80365

- Large hard-stamped identification
- Double line (SAE) and knurled line (MM) for easy identification of standard and metric sockets
- Entry angle guides fastener



Gear Wrench 3/8" Drive 6-Point Deep SEA Sockets AHT

3/8" 80365	9/16" 80368	13/16" 80372
7/16" 80366	5/8" 80369	7/8" 80373
1/2" 80367	3/4" 80371	

Gear Wrench 3/8" Drive 6-Point Deep Metric Sockets AHT

8 mm 80390	14 mm 80396	20 mm 80406
9 mm 80391	15 mm 80397	21 mm 80407
10 mm 80392	16 mm 80398	22 mm 80408
11 mm 80393D	17 mm 80399	24 mm 80409
12 mm 80394D	18 mm 80400	
13 mm 80395	19 mm 80401	

- Large hard-stamped identification
- Double line (SAE) and knurled line (MM) for easy identification of standard and metric sockets
- Entry angle guides fastener

Image Shown: 80761



Gear Wrench 1/2" Drive 12-Point Standard Socket AHT

1/2" 80761	13/16" 80766	1-1/8" 80771
9/16" 80762	7/8" 80767	1-3/16" 80793
5/8" 80763	15/16" 80768	1-1/4" 80794
11/16" 80764	1" 80769	1-1/2" 80680
3/4" 80765	1-1/16" 80770	

Gear Wrench 1/2" Drive 12-Point Metric Socket AHT

8 mm 80805	17 mm 80752	24 mm 80759
10 mm 80745	18 mm 80753	25 mm 80811
12 mm 80747	19 mm 80754	27 mm 80812
13 mm 80748D	20 mm 80755D	30 mm 80813
14 mm 80749	21 mm 80756	32 mm 80814D
15 mm 80750	22 mm 80757	36 mm 80815D
16 mm 80751	23 mm 80758	

Image Shown: 80773

- Large hard-stamped identification
- Double line (SAE) and knurled line (MM) for easy identification of standard and metric sockets
- Entry angle guides fastener



Gear Wrench 1/2" Drive 12-Point Deep SAE Socket AHT

1/2" 80773	1/2" 80777D	1" 80795
9/16" 80774	13/16" 80778	1-1/16" 80796
5/8" 80775	7/8" 80779	1-1/8" 80797
11/16" 80776	15/16" 80780	1-1/4" 80798

Gear Wrench 1/2" Drive 12-Point Deep Metric Socket AHT

10 mm 80781	17 mm 80788	24 mm 80822
12 mm 80783	18 mm 80789	27 mm 80824
13 mm 80784	19 mm 80790	30 mm 80826
14 mm 80785	20 mm 80817D	32 mm 80827
15 mm 80786	21 mm 80818	
16 mm 80787	22 mm 80820	

Image Shown: 88820

Gear Wrench 3/4" Drive Socket AHT

1-5/16" 88820	1-1/2" 88823	1-3/4" 88826
1-3/8" 88821	1-5/8" 88824	2" 88827
1-7/16" 88822	1-11/16" 88825	



HAND TOOLS

SPARK PLUG SOCKETS

- Surface Drive® reduces fastener rounding
- Full polish chrome finish
- Meets or exceeds ASME B107.34



Gear Wrench 3/8" Drive 13/16" x 6" Magnetic Swivel Spark Plug Socket AHT 80547D/80547

* Disclaimer: Not all products listed in this catalog are stocked in all stores or DC locations. If not stocked, they are available via special order.

- Magnetic insert holds plugs for removal and installation
- 360° swivel action
- 6-point, 3/8" drive



Gear Wrench 9/16" x 6" Magnetic Swivel Spark Plug Socket
AHT 3938D

- Surface Drive® Reduces Fastener Rounding
- Full Polish Chrome Finish
- Meets or Exceeds ASME B107.34

Image Shown: 87820



Gear Wrench 3/8" Drive Spark Plug Socket 9/16" AHT 87820

Gear Wrench 3/8" Drive Spark Plug Socket 5/8" AHT 80402

Gear Wrench 3/8" Drive Spark Plug Socket 3/4" AHT 80599

Gear Wrench 3/8" Drive Spark Plug Socket 13/16" AHT 80403

- Surface Drive® Reduces Fastener Rounding
- Full Polish Chrome Finish
- Meets or Exceeds ASME B107.34

Gear Wrench 3/8" Drive FX Spark Plug Socket 5/8"
AHT 80404

Gear Wrench 3/8" Drive FX Spark Plug Socket 13/16"
AHT 80405



HAND TOOLS

SOCKET EXTENSIONS

- Flex Shaft Allows Extension to Bend into Multiple Positions
- Reach Difficult To Access Fasteners Standard Sockets/Extensions Cannot Reach
- Designed Access to Extreme Angled Fasteners for Use in Low Torque Applications
- 1/4" Drive 6" Length Flexible Extension
- 3/8" Drive 8" Length Flexible Extension



Gear Wrench Flex Extension - 2 Pc. AHT 87912

- Knurled handle for better grip
- Dual position can be pushed all the way in for fixed position or pushed partially in for wobble position



Gear Wrench 4-Piece 1/4" Drive Wobble Extension Set
AHT 81004DN

Image Shown: 81113D



- Knurled handle for better grip

Gear Wrench 1/4" Drive Extension 3" AHT 81113D

Gear Wrench 1/4" Drive Extension 6" AHT 81116

Image Shown: AC310



- 1/4" Drive

AutoCraft 1/4" Drive 2" Extension AHT AC310

AutoCraft 1/4" Drive 6" Extension AHT AC311

- Allows for better access in tight spaces
- Knurled grip provides non-slip surface
- Full polish chrome finish



Gear Wrench 3/8" Drive Extension Set AHT 81200D

- Knurled handle for better grip
- Dual position can be pushed all the way in for fixed position or pushed partially in for wobble position



Gear Wrench 4-Piece 3/8" Drive Wobble Extension Set AHT 81201N/81201

- Knurled grip provides non-slip surface

Image Shown: 81240



Gear Wrench 3/8" Drive Extension 1-1/2" AHT 81240

Gear Wrench 3/8" Drive Extension 3" AHT 81241

Gear Wrench 3/8" Drive Extension 6" AHT 81242

Gear Wrench 3/8" Drive Extension 10" AHT 81243

Gear Wrench 3/8" Drive Extension 18" AHT 87804

- 3/8" Drive

AutoCraft 3/8" Drive 3" Extension AHT AC312

AutoCraft 3/8" Drive 5" Extension AHT AC313



Image Shown: AC312

- Knurled handle for better grip
- Dual position can be pushed all the way in for fixed position or pushed partially in for wobble position



Gear Wrench 3-Piece 1/2" Drive Wobble Extension Set
AHT 81301N/81301

- Knurled handle for better grip

Image Shown: 81340



Gear Wrench 1/2" Drive Extension 3" AHT 81340

Gear Wrench 1/2" Drive Extension 5" AHT 81341

Gear Wrench 1/2" Drive Extension 10" AHT 81342

Gear Wrench 1/2" Drive Extension 20" AHT 87854

- 1/2" Drive

AutoCraft 1/2" Drive 3" Extension AHT AC314

AutoCraft 1/2" Drive 5" Extension AHT AC315

AutoCraft 1/2" Drive 10" Extension AHT AC316



Image Shown: AC314

- Knurled Grip Provides Non-Slip Surface

Gear Wrench 3/4" Drive Extension 8" AHT 81412



HAND TOOLS

SOCKET ADAPTERS

- This set includes the most commonly used adapters to allow 1/4", 3/8" and 1/2" drive tools to be used with sockets and accessories of different drive sizes.



Gear Wrench 4-Piece Drive Adapter Set AHT 81217

* Disclaimer: Not all products listed in this catalog are stocked in all stores or DC locations. If not stocked, they are available via special order.

- Full polish chrome provides a professional look while also strong with maximum corrosive resistance

Gear Wrench 1/4" Drive 3/8" M x 1/4" F Adapter AHT 81127



- Allows a 3/8" drive tool to be used with 1/2" drive sockets and accessories.

Gear Wrench 3/8" Drive Female x 1/2" Drive Male Adapter AHT 81278



- Allows a 3/8" drive tool to be used with 1/4" drive sockets and accessories.

Gear Wrench 3/8" Drive Female x 1/4" Drive Male Adapter AHT 81277



- Chrome Molybdenum Alloy Steel (Cr-Mo) for Exceptional Strength and Long Lasting Durability
- Manganese Phosphate Coating to Resist Corrosion
- Meets or Exceeds ASME B107.1

Gear Wrench 3/8" Female x 1/2" Male Impact Adapter AHT 84408



- Allows a 1/2" drive tool to be used with 3/8" drive or 3/4" sockets and accessories.

*Image Shown:
81354*

Gear Wrench 1/2" Drive Female x 3/8" Drive Male Adapter AHT 81354

Gear Wrench 1/2" Drive Female x 3/4" Drive Male Adapter AHT 81355



HAND TOOLS UNIVERSAL JOINTS

- Universal joint allows for greater access
- Full polish chrome finish cleans easily and resists corrosion

Gear Wrench Universal Joint Set, 3 Piece AHT 81228



- Contains (1) each; 1/4" Dr, 3/8" Dr, 1/2" Dr
- Chrome finish

AutoCraft Universal Joint Set, 3 Piece AHT AC1023



- Allows a standard 1/4" drive fixed ratchet to pivot 360° for better angle positioning.

Gear Wrench 1/4" Drive Universal Joint AHT 80100



- Allows a standard 3/8" drive fixed ratchet to pivot 360° for better angle positioning.

Gear Wrench 3/8" Drive Universal Joint AHT 80549



- Allows a standard 1/2" drive fixed ratchet to pivot 360° for better angle positioning.

Gear Wrench 1/2" Drive Universal Joint AHT 80600D



HAND TOOLS SPECIALTY ADAPTERS

- Can withstand higher torque than traditional adapters.
- May be utilized as a small extension or hand drive for tight access.
- Patented

Cal Van 3/8" - 1/2" Twin Spin Drive Converter AHT 489



- Replaces hard to use universal adapters.
- Exceeds ANSI specs torque max for universal socket adapters.
- Patented

Cal Van 3/8" Drive 90° Gearless Angle Drive AHT 483



HAND TOOLS IMPACT SOCKET SETS

Dewalt Tools Metric Impact Socket
SBD DWMT744490SP



- 3/8" Drive

Dewalt Tools Stanley 7 Pc. Deep SAE Socket Impact Socket SBD DWMT744480SP



- Chamfered ends for secure and quick engagement
- Constructed of chrome moly steel

TEQ Correct Impact Socket Set AHT 101



- Chamfered ends for secure and quick engagement
- Constructed of chrome moly steel

TEQ Correct Impact Socket Set AHT 102



- Chamfered ends for secure and quick engagement
- Constructed of chrome moly steel

TEQ Correct Impact Socket Set AHT 103



- Chamfered ends for secure and quick engagement
- Constructed of chrome moly steel

TEQ Correct Impact Socket Set AHT 104



- Phosphate finish for added corrosion protection

AutoCraft 9 Pc. 1/2" Drive Impact Socket Set AHT AC356



- Phosphate finish for added corrosion protection

AutoCraft 9 Pc. 1/2" Drive Impact Socket Set AHT AC357



* Disclaimer: Not all products listed in this catalog are stocked in all stores or DC locations. If not stocked, they are available via special order.

- Phosphate finish for added corrosion protection

AutoCraft 10 Pc. 1/2" Drive Impact Socket Set AHT AC358



- Phosphate finish for added corrosion protection

AutoCraft 10 Pc. 1/2" Drive Impact Socket Set AHT AC359



HAND TOOLS

IMPACT SOCKETS

- SAE
- Phosphate finish for added corrosion protection

Image Shown: AC349



AutoCraft 1/2" Drive Deep Impact Socket AHT

3/4" AC349	15/16" AC352	1-1/16" AC354
13/16" AC350	1" AC353	1-1/8" AC355
7/8" AC351		

AutoCraft 1/2" Drive Deep Impact Socket AHT

15mm AC339	18mm AC342	21mm AC344
17mm AC341	19mm AC343	22mm AC345

HAND TOOLS

IMPACT EXTENSIONS

- Chrome Molybdenum Alloy Steel (Cr-Mo) for Exceptional Strength and Long Lasting Durability
- Pin Hole for Use with Pin and O-Ring for Secure Socket Retention
- High Visibility Laser Etched Markings
- Meets or Exceeds ASME B107.2



Gear Wrench 1/2" Drive Impact Extension, 5" AHT 84646

HAND TOOLS

IMPACT ADAPTERS

- Chrome Molybdenum Alloy Steel (Cr-Mo) for Exceptional Strength and Long Lasting Durability
- Manganese Phosphate Coating to Resist Corrosion
- Meets or Exceeds ASME B107.1



Gear Wrench 1/2" Drive Impact Drive Adapter, 1/2" Female x 3/8" Male AHT 84643

Gear Wrench Drive Adapter, Impact - 3/4" Female x 1/2" Male AHT 84888D



Image Shown: AC337

- Phosphate finish for added corrosion protection

AutoCraft 1/2" Female x 3/8" Male Impact Socket Adapter AHT AC337

AutoCraft 3/4" Female x 1/2" Male Impact Socket Adapter AHT AC338



HAND TOOLS

IMPACT UNIVERSAL JOINTS

- Chrome Molybdenum Alloy Steel (Cr-Mo) for Exceptional Strength and Long Lasting Durability
- Manganese Phosphate Coating to Resist Corrosion
- Meets or Exceeds ASME B107.2



Gear Wrench Impact Universal Joint 3/8" Drive AHT 80548N

- Chrome Molybdenum Alloy Steel (Cr-Mo) for Exceptional Strength and Long Lasting Durability
- Manganese Phosphate Coating to Resist Corrosion
- Meets or Exceeds ASME B107.2



Gear Wrench 1/2" Drive Impact Universal Joint AHT 80671N

HAND TOOLS

IMPACT SOCKET ADAPTERS

- Square-drive socket adapters converts square drive sockets into power nut setters.
- For 1/4" square-drive hex sockets and T-10 to T-30 square drive star bits
- 1/4" power drive hex shank



Century Drill & Tool Socket Adapter 1/4" Square Drive 2" Length 1/4" Hex Shank Impact Pro CPE 68578

- 1/4" power drive shank fits all power screw guns cordless screwdrivers variable speed electric drills and quick change adapter
- Made from heat treated chrome vanadium steel
- Overall length 2-1/2"



Century Drill & Tool Nutsetter Magnetic 1/4" X 2-9/16" Length 1/4" Hex Shank Impact Pro CPE 68874

- 1/4-Inch power drive shank fits all power screw guns cordless screwdrivers variable speed electric drills and quick change adapter
- Made from heat treated chrome vanadium steel
- Overall length 2-1/2-Inch



Century Drill & Tool Nutsetter Magnetic 3/8" X 2-9/16" Length 1/4" Hex Shank Impact Pro CPE 68876

- 1/4-Inch power drive shank fits all power screw guns cordless screwdrivers variable speed electric drills and quick change adapter
- Made from heat treated chrome vanadium steel
- Overall length 2-1/2-Inch



Century Drill & Tool Nutsetter Magnetic 5/16" X 2-9/16" Length 1/4" Hex Shank Impact Pro CPE 68875

HAND TOOLS

SPECIALTY SOCKETS

- They're built for use with a 3/4" square-drive ratchet or breaker bar.
- Wrench for servicing Chevrolet and GMC 5,200 and 7,200 lb. axles.
- Socket O.D. is 2-5/8".



OTC Tubular Bearing Retaining Nut Wrench, 2-5/8" OD (For GM 5, 200 & 7, 200 Lb. Ax) OTC 1929

* Disclaimer: Not all products listed in this catalog are stocked in all stores or DC locations. If not stocked, they are available via special order.

- They're built for use with a 3/4" square-drive ratchet or breaker bar.
- Wrench for servicing Chevrolet and GMC 15,000 lb. axles; 17,000 lb. 2-spd. axles; 15,000 lb. trailing axles.
- Socket O.D. is 3-5/8".

OTC Tubular Bearing Retaining Nut Wrench, 3-5/8" OD
OTC 1931



- NOTE: Sockets are designed for use with 3/4 in. square-drive manual tools only. Impact tool use voids sockets' warranty.



6 Point

OTC Locknut Wrench 2-3/32" Hex OTC 1901

OTC Locknut Wrench 2-1/4" Hex OTC 1920

Image Shown: 1901

OTC Locknut Wrench 2-3/8" Hex OTC 1902

OTC Locknut Wrench 2-1/2" Hex OTC 1921

OTC Locknut Wrench 2-3/8" Hex - Fits special in. rounded in. hex nut found on Dana axles of some Ford trucks OTC 1936

OTC Locknut Wrench 2-9/16" Hex OTC 1904

OTC Locknut Wrench 2-5/8" Hex OTC 1922

OTC Locknut Wrench 2-9/16" Hex - Fits special in. rounded in. hex nut found on Dana axles of some Ford trucks. OTC 1928

OTC Locknut Wrench 2-3/4" Hex OTC 1923

OTC Locknut Wrench 2-7/8" Hex OTC 1932

OTC Locknut Wrench 3" Hex OTC 1906

OTC Locknut Wrench 3-1/8" Hex OTC 1934

OTC Locknut Wrench 3-1/4" Hex OTC 1908

OTC Locknut Wrench 3-1/2" Hex OTC 1910

OTC Locknut Wrench 3 3/4" Hex OTC 1926

OTC Locknut Wrench 3-7/8" Hex OTC 1912

OTC Locknut Wrench 4" Hex OTC 1914

OTC Locknut Wrench 4-1/8" Hex OTC 1915

OTC Locknut Wrench 4-3/8" Hex OTC 1916

8 Point

OTC Locknut Wrench 2-9/16" Oct OTC 1905

OTC Locknut Wrench 2-3/4" Oct OTC 1937

OTC Locknut Wrench 3" Oct OTC 1907

OTC Locknut Wrench 3-1/4" Oct OTC 1909

OTC Locknut Wrench 3-3/8" Oct OTC 1924

OTC Locknut Wrench 3-1/2" Oct OTC 1911

OTC Locknut Wrench 3-3/4" Oct OTC 1925

OTC Locknut Wrench 3-13/16" Oct OTC 1927

OTC Locknut Wrench 3-7/8" Oct OTC 1913

OTC Locknut Wrench 4-1/8" Oct OTC 1940

OTC Locknut Wrench 4-3/8" Oct OTC 1917

OTC Locknut Wrench 4-1/2" Oct OTC 1938

OTC Locknut Wrench 4 13/16" Oct OTC 1941

OTC Locknut Wrench 4-7/8" Oct OTC 1919

- Removes and Installs Axle Nuts and Automatic Transmission Tail Output Shafts.
- Heat-treated alloy steel, impact quality, extra deep, 1/2" drive. Applications: Chrysler- 300C, Crossfire 2004, Dodge- Freightliner Sprinter vans with 215mm rear axle 2004 and up, Magnum 2004, Jeep- Grand Cherokee V6 models 2005, Lexus- ES300, Pontiac- Vibe, Mercedes- many models, Toyota- Avalon, Camry, Highlander, Matrix, VW Beetle, Jetta, Golf 1999 and up.



Lisle 30mm 12pt Axle Nut Socket LST 39510

- For All 36 mm Axle Nuts.
- Durable, impact-grade material. Deep to fit over variable axle lengths. Works where standard sockets won't. Use 1/2" drive.



Lisle FWD Axle Nut Socket (36 mm) LST 39550

- For 4-slot applications.
- 1/2" drive. Not for use with impact wrench.



Lisle 4-WD Wheel Bearing Lock-Nut Tool LST 27250

- Full tooth engagement is designed not to slip.
- Fits 4-slot 2-1/2" lock rings used on common 4-WD trucks.
- Use with 1/2" drive.
- Not for use with impact wrench.



Lisle 4 WD Bearing Lock-Nut Tool LST 29900

- Combination tool for both 4-slot and 6-slot applications.
- 1/2" drive. Not for use with impact wrench.



Lisle Combination 4-WD Wheel Bearing Lock-Nut Tool
LST 27400

- Two tools in one.
- Small end fits Ford 1986 to 1994 light trucks with Dana 44 front axle.
- Large end fits 1985 and newer Ford F150 - F350 trucks with the Dana 80 full floating rear axle.
- Use with 1/2" square drive.
- This tool is uniquely designed with double-ended for both sizes of ratcheting style lock nuts.



Lisle Ratcheting Double Ended Bearing Lock Nut Tool LST 28000

- Removes and Installs Oxygen Sensors on Most Domestic and Some Imports.
- Special 7/8" socket with cutaway slot to provide clearance for wire harness. Provides adequate depth to fit over sensor. Heat-treated alloy steel. Use with 3/8" square drive or 1" wrench.



Lisle Oxygen Sensor Socket LST 12100

- Used to Remove and Replace the Injector Pressure Regulator (IPR) on Ford 6.0L, International and Other Diesel Engines.
- This regulator is located in a very tight location. The tool is built to bottom out on the regulator hex so it does not put torque on the connector in case the regulator can be reused. Use with 3/8" square drive.



Lisle IPR Socket for Ford 6.0L and International Diesel LST 68210

- Fits 1" and 1 1/16" Switches Up To 1 5/8" Long.
- One socket with the correct length to fit 1" and 1 1/16" oil pressure switches (for vehicles equipped with warning lights). 1 7/8" overall height for clearance. Use with 3/8" drive or 1 1/8" hex.



Lisle Oil Pressure Switch Socket LST 13200

- Fits 1 1/16" Switches Up To 2 5/8" Long, Found on Newer GM and Chrysler Vehicles.
- Fits 1 1/16" oil pressure sending unit (gauge type), found on most all '91 and newer GM vehicles. Also fits '87 and newer Chrysler vehicles with combination light and gauge oil pressure switches. Use with 3/8" drive or 1 1/8" hex.



Lisle Oil Pressure Switch Socket LST 13250

- When you are faced with a rounded-off, rusted-tight or painted-over bolt, bolt extractors will break it free
- Reverse spiral flutes are designed to bite down to provide maximum gripping power
- High carbon steel ensures longer life and greater durability
- Universal lobular design fits all types of fasteners
- 3/8" square drive for use with hand ratchets, impact wrenches, and air ratchets; hexagonal flats for use with flat wrench, pliers, adjustable wrench, sockets or VISE-GRIP locking pliers
- Set include bolt extractors to remove bolts sizes: 8mm, 10mm, 13mm, 19mm, 5/16", 11/16", 3/4" in drive size 3/8"



Irwin Expansion 5 Pc. Set Pliers PET 394002

- Frees rounded-off, rusted-tight or painted-over bolts
- Reverse spiral flutes are designed to bite down to provide maximum gripping power
- High carbon steel for greater durability and a longer life
- Universal lobular design fits all types of fasteners
- Set includes carrying case and extractors to remove bolts sizes: 11mm, 14mm, 16mm, 3/8", 7/16", 1/2", 9/16", 5/8" in drive size 3/8"
- Removes rounded-off, rusted, over-tightened, and painted-on fasteners easily
- Reverse spiral flutes bite down and provide maximum gripping power



Irwin Bolt Out with Case PET 394001

- When you are faced with a rounded-off, rusted-tight or painted-over bolt, bolt extractors will break it free
- Reverse spiral flutes are designed to bite down to provide maximum gripping power
- High carbon steel ensures longer life and greater durability
- Universal lobular design fits all types of fasteners
- 3/8-Inch square drive for use with hand ratchets, impact wrenches and air ratchets; hexagonal flats for use with flat wrench, pliers, adjustable wrench, sockets or VISE-GRIP locking pliers



Irwin Bolt-Grip Deep Well PET 3094001

- Remove lug nuts and locking lug nuts

Performance Tool Emergency Lug Nut Removal Set, 2 Pcs WIL M980



HAND TOOLS

E TORX SOCKETS

- Heat treated socket bases for durability and serviceability
- Professional, full polish chrome

Gear Wrench 1/4" Drive E Torx Droup Set AHT 80322D/80322



- Color-coded plastic clip rail for storage

Gear Wrench 10-Piece 1/4", 3/8" & 1/2" Drive External Torx® Socket Set AHT 80582N/80582



- Large hard-stamped identification *Image Shown: 80460N/80460*

Gear Wrench 3/8" Drive External Torx Socket E-10 AHT 80460N/80460

Gear Wrench 3/8" Drive External Torx Socket E-12 AHT 80461N/80461

Gear Wrench 3/8" Drive External Torx Socket E-14 AHT 80462N/80462



- Large hard-stamped identification

Gear Wrench 1/4" Drive External Torx® Socket E-8 AHT 80190N/80190



- For External Torx Bolts.
- Includes 10 sizes, E5 through E20. Made of heat-treated alloy steel. Sockets are kept in a convenient vinyl holder.
- Available Individually: 26770 E-5 #8, 4 mm 1/4" drive, 26780 E-6 #10, 5 mm 1/4" drive, 26790 E-7 5/16 stud 1/4" drive, 26800 E-8 #12 1/4", 6 mm 1/4" drive, 26820 E-10 5/16", 8 mm 3/8" drive, 26830 E-12 3/8", 10 mm 3/8" drive, 26840 E-14 7/16", 12 mm 3/8" drive, 26850 E-16 1/2" 3/8" drive, 26860 E-18 9/16", 14 mm 1/2" drive, 26870 E-20 5/8", 16 mm 1/2" drive



Lisle Master Torx Socket Set LST 26280

- For external torx bolts. Seven sizes E-6 thru E-16.
- The three smaller sizes are 1/4" drive; the four larger sizes are 3/8" drive.
- Made of heat-treated alloy steel.
- Sockets are kept in a convenient vinyl holder Fits Ford under body cross members, rear wheel brakes on Thunderbirds and Cougars, and dual wheel Ford trucks.



Lisle 8 Piece External Torx Socket Set LST 26750

HAND TOOLS

TORX & STAR BIT SOCKETS

- Heat treated socket bases for durability and serviceability
- All bit sockets are 6" long
- Professional, full polish chrome

Gear Wrench 1/4" & 3/8" Drive 10 Piece Long TORX® Bit Socket Set AHT 80588D/80588



- Heat-treated socket bases for durability and serviceability
- Professional, full polish chrome

Gear Wrench 13-Piece Torx Tamper Proof Bit Socket Set AHT 80725N/80725



- Heat-treated socket base for durability and serviceability
- Designed to force bit surface to the opposite side for enhanced retention
- Color-coded plastic clip rail for storage

Gear Wrench 10-Piece 1/4" & 3/8" Drive Torx® Bit Socket Set AHT 80722N/80722



- Large Hard Stamped Size Identification
- Professional, Full Polish Chrome Base
- Press Fit Insert Bits
- S2 Steel Insert Bits
- Hex Bit Sizes 7, 8, 10mm & 1/4", 5/16" 3/8"
- Torx Bit Sizes T40, T45, T47, T50 & T55

Gear Wrench 11 Piece Brake Caliper Socket Set AHT 88910



* Disclaimer: Not all products listed in this catalog are stocked in all stores or DC locations. If not stocked, they are available via special order.

Image Shown: 80534N/80534

- Heat-treated socket base for durability and serviceability
- Bit-holding design forces bit surface to the opposite side for enhanced retention

**Gear Wrench 3/8" Drive Torx® Bit Socket AHT**

T-15 80534N/80534	T-30 80538N/80538	T-47 80453N/80453
T-20 80535N/80535	T-40 80451N/80451	T-50 80454N/80454
T-25 80536N/80536	T-45 80452N/80452	T-55 80455N/80455
T-27 80537N/80537		

Image Shown: 80667N/80667

- Heat-treated socket base for durability and serviceability
- Bit-holding design forces bit surface to the opposite side for enhanced retention

**Gear Wrench 1/2" Drive Torx® Bit Socket T-60 AHT** 80667N/80667**Gear Wrench 1/2" Drive Torx® Bit Socket T-70 AHT** 80693N/80693

- 12 Pieces

AutoCraft Star Bit Socket Set - 1/4", 3/8", 1/2" Drives AHT AC1025

- This set includes nine of the most popular Torx sizes for automotive applications.
- The six smaller bits are 1/4" drive, and the three larger bits are 3/8" drive.
- The set includes T-10, T-15, T-20, T-25, T-27, T-30, T-40, T-45 and T-50 in a convenient holder.
- The T-47, T-55 and T-60 bits are available individually 37600 Super Torx set, which is 20 percent stronger than one-piece Torx bits.

**Lisle 9 Piece Super Torx Bit Socket Set T-10 to T-60** LST 37600

- Seven 1/4" Hex Insert Bits with 1/4" Drive Bit Holder. T-10 Through T-40.
- Fits tamper-resistant Torx fasteners found on radio mountings, exterior mirrors, carburetors and other applications.
- Available Individually: 26010 T-10 1/4" drive, 26020 T-15 1/4" drive, 26030 T-20 1/4" drive, 26040 T-25 1/4" drive, 26050 T-27 1/4" drive, 26060 T-30 1/4" drive, 26070 T-40 1/4" drive, 26080 Bit Holder

**Lisle Tamper Resistant Torx Bit Set** LST 26000

- All Torx bits are made of heat-treated alloy steel.
- 9 pc. Set includes T-10 through T-50. T-10 through T-30 are 1/4" drive. T-40 through T-50 are 3/8"
- Available Individually: 26560 T-10 1/4" drive, 26570 T-15 1/4" drive, 26580 T-20 1/4" drive, 26590 T-25 1/4" drive, 26600 T-27 1/4" drive, 26610 T-30 1/4" drive, 26620 T-40 3/8" drive, 26630 T-45 3/8" drive, 26640 T-50 3/8" drive

**Lisle 9 Piece Torx Bit Set** LST 26550

- 12 Pc. Torx Bit Set
- A 12 pc. set includes the T-10 through T-50, plus the T-47, T-55 and T-60 bits.
- Available Individually: 26560 T-10 1/4" drive, 26570 T-15 1/4" drive, 26580 T-20 1/4" drive, 26590 T-25 1/4" drive, 26600 T-27 1/4" drive, 26610 T-30 1/4" drive, 26620 T-40 3/8" drive, 26630 T-45 3/8" drive, 26500 T-47 3/8" drive, 26640 T-50 3/8" drive, 26650 T-55 3/8" drive, 26520 T-60 1/2" drive

**Lisle Torx Bit Set** LST 27200

- For Electrical Ignition Switches On GM.
- This extra deep socket is used on some General Motors ignition switches, 1/4" drive.

Lisle E-4 Torx Socket LST 27490**Lisle 1/4" Drive Torx Socket - T10** LST 26560**Lisle 1/4" Drive Torx Socket - T15** LST 26570**Lisle 1/4" Drive Torx Socket - T20** LST 26580**Lisle 1/4" Drive Torx Socket - T25** LST 26590**Lisle 1/4" Drive Torx Socket - T27** LST 26600**Lisle 1/4" Drive Torx Socket - T30** LST 26610**Lisle 3/8" Drive Torx Socket - T40** LST 26620**Lisle 3/8" Drive Torx Socket - T45** LST 26630**Lisle 3/8" Drive Torx Socket - T47** LST 26500**Lisle 3/8" Drive Torx Socket - T50** LST 26640**Lisle 3/8" Drive Torx Socket - T55** LST 26650**Lisle 1/2" Drive Torx Socket - T-60** LST 26520

Image Shown: 26570

HAND TOOLS

HEX BIT SOCKETS

Gear Wrench 40 Pc. Hex Torx Set AHT 40424A

- All bit sockets are 6" long
- Heat treated socket bases for durability and serviceability
- Professional, full polish chrome

Gear Wrench 3/8" Drive SAE Long Hex Socket Set AHT 80574D/80574

- All bit sockets are 6" long
- Heat treated socket bases for durability and serviceability
- Professional, full polish chrome

Gear Wrench 3/8" Drive Metric Long Hex Socket Set AHT 80573D/80573

- Color-coded plastic clip rail for storage

Gear Wrench 12-Piece 3/8" Drive Hex Bit Socket Set (SAE) AHT 80581N/80581

- Color-coded plastic clip rail for storage

Gear Wrench 12-Piece 3/8" Drive Hex Bit Socket Set (Metric) AHT 80580N/80580

* Disclaimer: Not all products listed in this catalog are stocked in all stores or DC locations. If not stocked, they are available via special order.

- Heat-treated socket bases for durability and serviceability
- Professional, full polish chrome

Gear Wrench 7-Piece 1/2" Drive Hex Bit Set, SAE AHT 80721N/80721



- Heat-treated socket bases for durability and serviceability
- Professional, full polish chrome

Gear Wrench 7-Piece 1/2" Drive Hex Bit Set, Metric AHT 80720N/80720



Image Shown: 80417N/80417

- Heat-treated socket base for durability and serviceability
- Bit-holding design forces bit surface to the opposite side for enhanced retention



Gear Wrench 3/8" Drive Hex Bit SAE Socket AHT

3/16" 80417N/80417	1/4" 80419N/80419	3/8" 80421N/80421
7/32" 80418N/80418	5/16" 80420N/80420	

Gear Wrench 3/8" Drive Hex Bit Socket AHT

4 mm 80425N/80425	6 mm 80427N/80427	8 mm 80429N/80429
5 mm 80426N/80426	7 mm 80428DN/80428D	10 mm 80431N/80431

- Seven Piece Set. 3/8" Square Drive.
- High strength, heat-treated alloy steel bits are securely broached into chrome plated sockets. No set screws to tighten! Bit sets store in a convenient vinyl storage holder.
- Available Individually: 13610 1/8", 13620 5/32", 13630 3/16", 13640 7/32", 13650 1/4", 13660 5/16", 13670 3/8"



Lisle Hex Bit Set LST 13600

HAND TOOLS

SQUARE BIT SOCKETS

Gear Wrench 4 Piece Trip Sqr Socket AHT 88912



HAND TOOLS

PLIERS

- Ideal for tightening, clamping, twisting, and turning
- Constructed of high-grade heat-treated alloy steel for durability
- Classic trigger release designed to provide maximum locking force
- Hardened teeth are designed to grip from any angle
- Set includes 6" and 11" Original Locking Clamps, 10" and 7" straight jaw, 10" and 7" curved jaw, 7" and 5" curved jaw with wire cutter, 6" and 9" long nose with wire cutter Original Locking Pliers, and tray



Irwin 10 Piece Original Locking Pliers Tray Set PET 1078TRAY

- Contains: 10WR*, 9LN*, 7R*, 6LN*, 5CR* & 4WR*
- Ideal for tightening, clamping, twisting and turning Turn screw to adjust pressure and fit work.
- Stays adjusted for repetitive use
- Constructed of high-grade heat-treated alloy steel for maximum toughness and durability
- Guarded release trigger quickly unlocks and protects from accidental release
- Hardened teeth are designed to grip from any angle

Irwin 6 Piece Locking Plier Set PET 641



- IRWIN VISE-GRIP locking pliers are ideal for tightening, clamping, twisting and turning
- IRWIN pliers are made of high-grade, heat-treated alloy steel for toughness and durability
- Classic trigger release designed to provide maximum locking force
- Hardened teeth are designed to grip from any angle
- 5-piece set in kit bag includes 1 each of 10R, 10WR, 7CR, 5WR and 6LN locking pliers
- IRWIN VISE-GRIP locking pliers are ideal for tightening, clamping, twisting and turning
- IRWIN pliers are made of high-grade, heat-treated alloy steel for toughness and durability

Irwin 5 Piece Locking Pliers Set PET 2077704



- Constructed of high-grade heat-treated alloy steel for maximum toughness and durability
- Hardened teeth are designed to grip from any angle
- Classic trigger release designed to provide maximum locking force
- Turn screw stays adjusted for repeated use
- Set includes 10" straight jaw, 10" curved jaw, 7" curved jaw with wire cutter, 6" long nose pliers, and 5" curved jaw locking pliers

Irwin 5 Piece Locking Plier Set PET 68



- Adjustable jaws for a solid grip on all surfaces
- Soft grip handles for extra comfort
- Black micro-nickel plating resists corrosion

AutoCraft 3 Pc. Adjustable Wrench & Pliers Set AHT AC435



- 20% Reduced Hand Span improves user control and helps reduce hand strain
- Redesigned tactile grip zone helps improve user control and is suited for high-temperature applications
- Hex key adjusting screw tightens to adjust pressure and draws materials together, providing a more controlled release
- Made with a one-handed, triggerless release that is 2X easier to open
- Curved jaws allow for equal four-points of pressure, making it ideal for heavy torque on any style on nut or bolt head

Image Shown: IRHT82580



Irwin VISE-GRIP® Fast Release™ Curved Jaw Locking Pliers with Wire Cutter, 7" PET IRHT82580

Irwin VISE-GRIP® Fast Release™ Curved Jaw Locking Pliers with Wire Cutter, 10" PET IRHT82578

* Disclaimer: Not all products listed in this catalog are stocked in all stores or DC locations. If not stocked, they are available via special order.

- Self-energizing lower jaw provides 3X more gripping power than traditional locking pliers, with no slipping or stripping.
- Provides maximum torque without requiring heavy input pressure jaw mechanism naturally grips tighter as more torque is applied to the tool.
- Classic trigger release provides maximum locking force.
- Curved jaw puts tremendous pressure on four points of any style nut or bolt head, making it perfect for any application that requires maximum torque
- Constructed of high-grade heat-treated alloy steel for maximum toughness and durability.

Image Shown: 7CR

**Irwin 7" Curved Jaw Plier - Jaw Capacity 1-5/8"** PET 7CR**Irwin 10" Curved Jaw Plier - Jaw Capacity 1-7/8"** PET 10CR

- Straight jaws provide maximum contact on flat, square, or hex work
- Ideal for tightening, clamping, twisting and turning
- Turn screw to adjust pressure and fit work. Stays adjusted for repetitive use
- Constructed of high-grade heat-treated alloy steel for maximum toughness and durability
- Classic trigger release designed to provide maximum locking force

Image Shown: 7R

**Irwin 7" Straight Jaw Plier - Jaw Capacity 1-5/8"** PET 7R**Irwin 10" Straight Jaw Plier - Jaw Capacity 1-1/8"** PET 10R

- Curved jaw with built-in wire cutter great for a variety of applications and material shapes.
- Classic trigger release provides maximum locking force.
- Convenient wire cutter included
- Constructed of high-grade heat-treated alloy steel for maximum toughness and durability.
- Hardened teeth are designed to grip from any angle.

Image Shown: 4WR

**Irwin 4" Curved Jaw With Wire Cutter Plier - Jaw Capacity 15/16"** PET 4WR**Irwin 5" Curved Jaw With Wire Cutter Plier - Jaw Capacity 1-1/4"** PET 5WR**Irwin 7" Curved Jaw With Wire Cutter Plier - Jaw Capacity 1-5/8"** PET 7WR**Irwin 10" Scurved Jaw With Wire Cutter Plier - Jaw Capacity 1-7/8"** PET 10WR

- Long, straight nose provides easy access in narrow, hard-to-reach places. Ideal for precision work and hobbies, includes convenient wire cutter
- Ideal for tightening, clamping, twisting and turning
- Turn screw to adjust pressure and fit work. Stays adjusted for repetitive use
- Constructed of high-grade heat-treated alloy steel for maximum toughness and durability
- Hardened teeth are designed to grip from any angle

Image Shown: 4LN

**Irwin 4" Long Nose Plier - Jaw Capacity 1-5/8"** PET 4LN**Irwin 6" Long Nose Plier - Jaw Capacity 2-1/4"** PET 6LN**Irwin 9" Long Nose Plier - Jaw Capacity 2-7/8"** PET 9LN

- Makes bending, forming, and crimping sheet metal jobs easier
- Turn screw to adjust pressure and fit work. Stays adjusted for repetitive use
- Constructed of high-grade heat-treated alloy steel for maximum toughness and durability
- Classic trigger release designed to provide maximum locking force

**Irwin 8" Locking Sheet Metal Pliers - Jaw Capacity 3-1/8"** PET 8R

- Locking pliers-type C-clamp.
- 10-1/2" (266.7 mm) long with 3-3/4" (95.3 mm) maximum opening and 3" (76.2 mm) depth.
- Extra clamping capacity for large objects.
- Not to be used for scaffolding or overhead lifting.

Forney 10-1/2" Deluxe Vise Grip C-Clamp FNY 70201

- Locking pliers-type C-clamp with jaw paws.
- 10-1/2" (266.7 mm) long with 3-3/4" (95.3 mm) maximum opening and 3" (76.2 mm) depth.
- Extra clamping capacity for large objects.
- Improved clamping with the moveable "jaw paw" pads.
- Not to be used for scaffolding or overhead lifting.

Forney C-Clamp, Locking, 10-1/2" with Jaw Paws FNY 70202

- Wide-opening jaws provide greater versatility in clamping a variety of shapes
- Turn screw to adjust pressure and fit work. Stays adjusted for repetitive use
- Constructed of high-grade heat-treated alloy steel for maximum toughness and durability
- Classic trigger release designed to provide maximum locking force

**Irwin 11" Locking C-Clamp Plier - Jaw Capacity 4"** PET 11R

- Chain holds and locks around any shape or size
- Ideal for awkward shape pieces
- Turn screw to adjust pressure and fit work. Stays adjusted for repetitive use
- Constructed of high-grade heat-treated alloy steel for maximum toughness and durability
- Classic trigger release designed to provide maximum locking force

**Irwin 9" Locking Chain Clamp - Jaw Capacity 18"** PET 20R

- Self-adjusts & locks for one-handed operation
- Durable forged CR-V jaws with induction hardened teeth for ultimate durability
- Nickel-plated finish for corrosion resistance
- Integrated wire cutter that can cut up to 1/4 bolt
- Hard rubber grip on handle helps prevent hand slippage

TEQ Correct 7" Self-Adjust Needle Nose Locking Pliers AHT TEQ42006

- Self-adjusts & locks for one-handed operation
- Durable forged CR-V jaws with induction hardened teeth for ultimate durability
- Nickel-plated finish for corrosion resistance
- Integrated wire cutter that can cut up to 1/4 bolt
- Hard rubber grip on handle helps prevent hand slippage

TEQ Correct 6" Self-Adjust Locking Pliers AHT TEQ42003

- Self-adjusts & locks for one-handed operation
- Durable forged CR-V jaws with induction hardened teeth for ultimate durability
- Nickel-plated finish for corrosion resistance
- Integrated wire cutter that can cut up to 1/4 bolt
- Hard rubber grip on handle helps prevent hand slippage

TEQ Correct 8" Self-Adjust Locking Pliers AHT TEQ42000

- Self-adjusts & locks for one-handed operation
- Nickel-plated finish for corrosion resistance
- Hard rubber grip on handle helps prevent hand slippage
- Pull-up release allows for one-handed opening when locked
- Complies with ASME specs B107.24



TEQ Correct 7" Self-Adjust Locking C-Clamp AHT TEQ42009

- Simple to use pressure adjustment knob
- Serrated jaw grips items firmly
- One-handed quick release lever
- Long nose design for hard to reach places
- Tempered chrome vanadium steel jaw



AutoCraft 6-1/2" Long Nose Locking Pliers AHT AC438

- Simple to use pressure adjustment knob
- Serrated jaw grips items firmly
- One-handed quick release lever
- Tempered chrome vanadium steel



AutoCraft 7" Curved Jaw Locking Pliers AHT AC436

- Simple to use pressure adjustment knob
- Serrated jaw grips items firmly
- One-handed quick release lever
- Tempered chrome vanadium steel



AutoCraft 10" Curved Jaw Locking Pliers AHT AC437

- Press-n-Slide button adjusts lower jaw 2X faster than traditional groove joint pliers
- Multi-Groove Ratcheting System has 2X more positions than other groove joint pliers for a precise grip on almost any surface
- Anti-pinch, non-slip ProTouch grips increase control and reduce hand fatigue
- Durable constructed using a Metal Injection Molding (MIM) process for exceptional strength and performance
- Backed by the IRWIN VISE-GRIP Lifetime Guarantee



Irwin 10" Groovelock Pliers PET 2078110

- Rounded inside edges for comfort
- Finger tipping end texture grips for access



Gear Wrench 9.5" Tongue-and-Groove Pliers with Curved Jaw AHT 82011

- Self-adjusts & locks for one-handed operation
- Twice as fast as standard groove joint pliers
- V-Jaw design for versatile gripping of round objects
- Maintains parallel jaws for optimal grip
- Black oxide finish resists rust and corrosion



TEQ Correct 10" V-Jaw Self-Adjust Locking Join Pliers AHT TEQ41000

- Tempered carbon steel for strength and durability
- Black micro-nickel plating resists corrosion
- Soft grip handles for extra comfort



AutoCraft 10" Groove Joint Pliers AHT AC430

- Rounded inside edges for comfort
- Finger tipping end texture grips for access



Gear Wrench 12" Tongue-and-Groove Pliers with Straight Jaw AHT 82020D

- Tempered carbon steel for strength and durability
- Black micro-nickel plating resists corrosion
- Soft grip handles for extra comfort



AutoCraft 6" Slip Joint Pliers AHT AC425

- Professional Easy-Clean Dipped Grips
- Forged Steel
- Anti-Rust Coating



Gear Wrench 8 in. PivotForce Long Nose Cutting Compound Action Plier AHT 82121

- Curved gripping jaws for select usage
- Rounded inside edges for comfort
- Finger tipping end texture grips for access



Gear Wrench 8" Long-Nose Pliers AHT 82013

- Tempered carbon steel for strength and durability
- Black micro-nickel plating resists corrosion
- Soft grip handles for extra comfort



AutoCraft 6" Long Nose Pliers AHT AC426

- Tempered carbon steel for strength and durability
- Black micro-nickel plating resists corrosion
- Soft grip handles for extra comfort



AutoCraft 6" Angle Pliers AHT AC429

- Professional Easy-Clean Dipped Grips
- Forged Steel



Gear Wrench 8 in. PivotForce Diagonal Cutting Compound Action Plier AHT 82120

- Curved gripping jaws for select usage
- Rounded inside edges for comfort
- Finger tipping end texture grips for access



Gear Wrench 7" Diagonal Pliers AHT 82012

- Tempered carbon steel for strength and durability
- Black micro-nickel plating resists corrosion
- Soft grip handles for extra comfort



AutoCraft 6.5" Diagonal Pliers AHT AC428

- Tempered carbon steel for strength and durability
- Black micro-nickel plating resists corrosion
- Soft grip handles for extra comfort



AutoCraft 7" Linesman Pliers AHT AC427

- Black nickel plating resists corrosion
- Tempered carbon steel



AutoCraft Pliers, Long Reach, 11" AHT AC851

* Disclaimer: Not all products listed in this catalog are stocked in all stores or DC locations. If not stocked, they are available via special order.

- Black nickel plating resists corrosion
- Tempered carbon steel

AutoCraft Pliers, Long Reach, 45° Tip, 11" AHT AC852



- Black nickel plating resists corrosion
- Tempered carbon steel

AutoCraft Pliers, Long Reach, 90° Tip, 11" AHT AC853



- Compound joints allow easy access with minimal handle movement
- Flush rivets for strength and a narrow profile
- Aligned serrated tips for precision gripping



Gear Wrench 12.75" Double-X 45-Degree Pliers AHT 82006D

- Compound joints allow easy access with minimal handle movement
- Flush rivets for strength and a narrow profile
- Aligned serrated tips for precision gripping



Gear Wrench 13" Double-X Straight Pliers AHT 82005D

HAND TOOLS

ADJUSTABLE WRNECHES

- Laser-etched scale range in SAE and metric for quick size identification
- Cushioned handle for comfort and grip



Gear Wrench 6" Adjustable Wrench with Cushion Grip AHT 81890

Gear Wrench 10" Adjustable Wrench with Cushion Grip AHT 81892

Gear Wrench 12" Adjustable Wrench with Cushion Grip AHT 81893

- Black micro-nickel plating resists corrosion
- Soft grip handles for extra comfort



AutoCraft 6" Adjustable Wrench AHT AC433

AutoCraft 8" Adjustable Wrench AHT AC432

AutoCraft 10" Adjustable Wrench AHT AC434

HAND TOOLS

PIPE WRENCH

- Cast iron body for strength
- Tempered forged carbon steel jaw for firm gripping

AutoCraft Wrench, Pipe, 10" AHT AC440

AutoCraft Wrench, Pipe, 14" AHT AC439



HAND TOOLS

WRENCHES

- The original patented ratcheting wrench
- Surface Drive® on box end provides off-corner loading for better grip and reduced fastener rounding
- Ratcheting box end needs as little as 5° to move fasteners vs. 30° for standard wrenches
- Bright, full polish chrome finish



Gear Wrench 20-Piece Ratchet Wrench Set AHT 8920A

- The Patented Driveworks ratcheting box end needs as little as 5 Degrees of sweep to move a fastener; a standard 12-point box-end wrench needs 30 Degrees, or 6x as much room; box end is 15 Degrees offset for knuckle clearance
- Long bolts and threaded rods are not a problem for the Driveworks; the ratcheting head allows the wrench to travel the length of the threads without removing the box end from the fastener
- The thin head and shank allow the Driveworks into the tightest areas
- The Surface Drive® box end configuration virtually eliminates the rounding of fasteners; by moving the contact points of the wrench back from the edge of the fastener, the area of flat contact is expanded, distributing the load over a wider area
- Extremely strong, Driveworks ratcheting combination wrench meets or exceeds ANSI, DIN and federal torque specifications for standard professional combination wrenches



Gear Wrench 8-Piece Reversible Ratcheting Combination Wrench Set - SAE AHT 9533N

- The Patented GearWrench® ratcheting box end needs as little as 5#176; of sweep to move a fastener, while a standard 12-point box-end wrench needs 30#176;; or 6x as much room; the flex head tilts 180#176; at any interval with continuous head tension
- Long bolts and threaded rods are not a problem for the GearWrench®; the ratcheting head allows the wrench to travel the length of the threads without removing the box end from the fastener
- The thin head and shank allow the GearWrench® into the tightest areas
- The Surface Drive® box end configuration virtually eliminates the rounding of fasteners; by moving the contact points of the wrench back from the edge of the fastener, the area of flat contact is expanded, distributing the load over a wider area
- Extremely strong, GearWrench® ratcheting combination wrench meets or exceeds ANSI, DIN and federal torque specifications for standard professional combination wrenches



Gear Wrench 7-Piece Flex Head Ratcheting Combination Wrench Set SAE AHT 9700

- Universal tooth design works on 6 point, 12 point, square, external TORX®, spline, and partially rounded fasteners
- Ratcheting box end needs as little as 5° to move fasteners vs. 30° for standard wrenches



Gear Wrench 5-Piece Universal Ratcheting Wrench Set, SAE AHT 85590A/85590

* Disclaimer: Not all products listed in this catalog are stocked in all stores or DC locations. If not stocked, they are available via special order.

- The Patented Driveworks ratcheting box end needs as little as 5 Degrees of sweep to move a fastener; a standard 12-point box-end wrench needs 30 Degrees , or 6x as much room
- Long bolts and threaded rods are not a problem for the Driveworks The ratcheting head allows the wrench to travel the length of the threads without removing the box end from the fastener.
- The thin head and shank allow the Driveworks into the tightest areas.
- The Surface Drive® box end configuration virtually eliminates the rounding of fasteners. By moving the contact points of the wrench back from the edge of the fastener, the area of flat contact is expanded, distributing the load over a wider area.
- Extremely strong, Driveworks ratcheting combination wrench meets or exceeds ANSI, DIN and federal torque specifications for standard professional combination wrenches.



Gear Wrench 5-Piece Ratcheting Combination Wrench Set - SAE
AHT 93005

- The Patented Driveworks ratcheting box end needs as little as 5 Degrees of sweep to move a fastener; a standard 12-point box-end wrench needs 30 Degrees , or 6x as much room
- Long bolts and threaded rods are not a problem for the Driveworks; the ratcheting head allows the wrench to travel the length of the threads without removing the box-end from the fastener
- Thin head and shank allow the Driveworks into the tightest areas
- The Surface Drive® box end configuration virtually eliminates the rounding of fasteners; by moving the contact points of the wrench back from the edge of the fastener, the area of flat contact is expanded, distributing the load over a wider area
- Extremely strong, Driveworks ratcheting combination wrench meets or exceeds ANSI, DIN and federal torque specifications for standard professional combination wrenches



Gear Wrench 5-Piece Ratcheting Combination Wrench Set - Metric
AHT 93004D

- The Patented Driveworks ratcheting box end needs as little as 5 Degrees of sweep to move a fastener; a standard 12-point box end wrench needs 30 Degrees , or 6x as much room; box end is 15 Degrees offset for knuckle clearance
- Long bolts and threaded rods are not a problem for the Driveworks; the ratcheting head allows the wrench to travel the length of the threads without removing the box end from the fastener
- The thin head and shank allow the Driveworks into the tightest areas
- The Surface Drive® box end configuration virtually eliminates the rounding of fasteners; by moving the contact points of the wrench back from the edge of the fastener, the area of flat contact is expanded, distributing the load over a wider area
- Extremely strong, Driveworks ratcheting combination wrench meets or exceeds ANSI, DIN and federal torque specifications for standard professional combination wrenches



Gear Wrench 8-Piece Reversible Ratcheting Combination Wrench Set - Metric AHT 9543

- Universal tooth design works on 6 point, 12 point, square, external TORX®, spline, and partially rounded fasteners
- Ratcheting box end needs as little as 5° to move fasteners vs. 30° for standard wrenches

Gear Wrench 5-Piece Universal Ratcheting Wrench Set, Metric AHT 85591A/85591



- The original patented ratcheting wrench
- Surface Drive® on box end provides off-corner loading for better grip and reduced fastener rounding
- Stubby length for tight access areas
- Ratcheting box end needs as little as 5° to move fasteners vs. 30° for standard wrenches
- Bright, full polish chrome finish

Gear Wrench 7-Piece Stubby Wrench Set, SAE AHT 8700A



- The Patented GearWrench® ratcheting box end needs as little as 5°/176; of sweep to move a fastener, while a standard 12-point box-end wrench needs 30°/176; or 6x as much room; the flex head tilts 180°/176; at any interval with continuous head tension
- Long bolts and threaded rods are not a problem for the GearWrench®; the ratcheting head allows the wrench to travel the length of the threads without removing the box end from the fastener
- The thin head and shank allow the GearWrench® into the tightest areas
- The Surface Drive® box end configuration virtually eliminates the rounding of fasteners; by moving the contact points of the wrench back from the edge of the fastener, the area of flat contact is expanded, distributing the load over a wider area
- Extremely strong, GearWrench® ratcheting combination wrench meets or exceeds ANSI, DIN and federal torque specifications for standard professional combination wrenches



Gear Wrench 7-Piece Flex Head Ratcheting Combination Wrench Set - Metric AHT 9900D

- QuadBox design has 2 fastener sizes in each box end
- Reversing levers on both sides for fast, easy access
- Save Weight: 4 Sizes in one wrench
- Surface Drive® on box end provides off-corner loading for better grip and reduced fastener rounding

Gear Wrench 2-Piece SAE QuadBox Reversible Ratcheting Wrench Set AHT 85900A/85900



- QuadBox design has 2 fastener sizes in each box end
- Reversing levers on both sides for fast, easy access
- Save Weight: 4 Sizes in one wrench
- Surface Drive® on box end provides off-corner loading for better grip and reduced fastener rounding

Gear Wrench 2-Piece Metric QuadBox Reversible Ratcheting Wrench Set AHT 85227A/85227



- The GearWrench® ratcheting box end needs as little as 5° of sweep to move a fastener
- Long bolts and threaded rods are not a problem for the GearWrench®. The ratcheting head allows the wrench to travel the length of the threads without removing the box end from the fastener
- The thin head and shank allow the GearWrench® into the tightest areas
- The Surface Drive® box end configuration virtually eliminates the rounding of fasteners. By moving the contact points of the wrench back from the edge of the fastener, the area of flat contact is expanded, distributing the load over a wide area
- GearWrench® ratcheting combination wrench meets or exceeds ANSI, DIN and federal torque specifications for standard professional combination wrenches

Image Shown: 9008

**Gear Wrench Ratcheting Combination SAE Wrench AHT**

1/4" 9008	9/16" 9018D
5/16" 9010D	3/4" 9024
7/16" 9014	7/8" 9028D
1/2" 9016D	15/16" 9030

Gear Wrench Ratcheting Combination Metric Wrench AHT

7 mm 9107	13 mm 9113D	18 mm 9118D
8 mm 9108D	14 mm 9114D	19 mm 9119
10 mm 9110D	15 mm 9115D	21 mm 9121
11 mm 9111	16 mm 9116D	22 mm 9122
12 mm 9112	17 mm 9117D	

- SAE: 5/16", 3/8", 7/16", 1/2", 9/16", 5/8", 11/16", 3/4", 13/16", 7/8"
- Precision machined ends for quick positioning and tight fastening
- Mirror polished and chrome plated for corrosion protection
- Durable reusable storage rack

**AutoCraft 10 Pc. X-Large Combination Wrench Set AHT AC395**

- Metric: 8mm, 10mm, 11mm, 12mm, 13mm, 14mm, 15mm, 17mm, 19mm, 22mm
- Precision machined ends for quick positioning and tight fastening
- Mirror polished and chrome plated for corrosion protection
- Durable reusable storage rack

**AutoCraft 10 Pc. X-Large Combination Wrench Set AHT AC396**

- SAE: 5/16", 3/8", 7/16", 1/2", 9/16", 5/8"
- Precision machined ends for quick positioning and tight fastening
- Mirror polished and chrome plated for corrosion protection
- Durable reusable storage rack

**AutoCraft 6 Pc. X-Large Combination Wrench Set AHT AC393**

- Metric: 8mm, 10mm, 12mm, 13mm, 14mm, 15mm
- Precision machined ends for quick positioning and tight fastening
- Mirror polished and chrome plated for corrosion protection
- Durable reusable storage rack

**AutoCraft 6 Pc. X-Large Combination Wrench Set AHT AC394**

- Metric: 6mm x 7mm, 8mm x 9mm, 10mm x 11mm, 12mm x 13mm, 14mm x 15mm, 16mm x 17mm
- Offset for superior clearance in tight work spaces
- Durable reusable storage rack

**AutoCraft 6 Pc. Offset Wrench Set AHT AC398**

- Offset for superior clearance in tight work spaces
- Durable reusable storage rack

**AutoCraft 6 Pc. Offset Wrench Set AHT AC397**

Image Shown: AC361

**AutoCraft XL Combination SAE Wrench AHT**

5/16" AC361	3/4" AC368	1-1/16" AC373
3/8" AC362	13/16" AC369	1-1/8" AC374
7/16" AC363	7/8" AC370	1-1/4" AC375
1/2" AC364	15/16" AC371	
9/16" AC365	1" AC372	

AutoCraft XL Combination Metric Wrench AHT

7 mm AC377	14 mm AC384	19 mm AC389
8 mm AC378	15 mm AC385	22 mm AC390
10 mm AC380	16 mm AC386	24 mm AC391
12 mm AC382	17 mm AC387	27 mm AC392
13 mm AC383	18 mm AC388	

HAND TOOLS

FLARE NUT WRENCH

- SAE sizes: 3/8"-7/16", 1/2"-9/16", 5/8"-11/16"
- Ratcheting jaw
- Low-Profile head
- Flexible head allows for access to tight places
- 150% ANSI spec, strength you can count on

**Gear Wrench 3 Piece Ratcheting Flare Nut Wrench Set SAE AHT 89098**

- MM Sizes: 10/12, 13/14, 15/17
- Ratcheting jaw
- Low-Profile head
- Flexible head allows for access to tight places
- 150% ANSI spec, strength you can count on

**Gear Wrench 3 Piece Ratcheting Flare Nut Wrench Set Metric AHT 89099**

* Disclaimer: Not all products listed in this catalog are stocked in all stores or DC locations. If not stocked, they are available via special order.

HAND TOOLS

CROWS FOOT WRENCH

- Drop forged steel with polished chrome finish

AutoCraft Wrench Set, Crows Foot, SAE, 8 Piece AHT AC850



- Drop forged steel with polished

AutoCraft Wrench Set, Crows Foot, Metric, 8 Piece AHT AC849



HAND TOOLS

HEX KEY SET

- Precisely sized, chamfered ends insert smoothly into fastener head, reducing wear

AutoCraft Hex Key Set, 23 Piece AHT AC1080



- Tempered chrome vanadium steel
- Hex key ball end for added flexibility

AutoCraft Hex Key Set, Short Arm, Metric, 10 Piece AHT AC454



- Tempered chrome vanadium steel
- Hex key ball end for added flexibility

AutoCraft Hex Key Set, Long Arm, Metric, 10 Piece AHT AC456



- Tempered chrome vanadium steel
- Hex key ball end for added flexibility

AutoCraft Hex Key Set, Short Arm, SAE, 13 Piece AHT AC453



- Tempered chrome vanadium steel
- Hex key ball end for added flexibility

AutoCraft Hex Key Set, Long Arm, SAE, 13 Piece AHT AC455



- Tempered chrome vanadium steel
- Designed for maximum torque

AutoCraft Star Key Set, Long Arm, 9 Piece AHT AC843



- Tempered chrome vanadium steel
- Designed for maximum torque

AutoCraft Star Key Set, Short Arm, 9 Piece AHT AC844



HAND TOOLS

SCREWDRIVERS

- Black Oxide Non slip magnetic tip
- Speed Zone for turning in lower torque applications
- Tri-Globe Ergonomic handle for optimal balance of strength and comfort
- Oil and solvent resistant

Gear Wrench 6-Piece Combination Screwdriver Set AHT 80050



- Tri-Lobe ergonomic feature gives the user the optimal balance of strength and efficiency
- "Speed Zone" handle design for faster rotation in low-torque applications like running down screws
- Dual material handle offers a more comfortable grip and higher performance
- Drivers resist oils and solvents, ensuring that the tool stays clean with minimal maintenance
- Laser etched size and part numbers on each screwdriver for quick identification

Gear Wrench 6 Pc. Phillips®/Slotted Dual Material Diamond Tip Screwdriver Set AHT 88920



- Black Oxide Non-Slip Tip
- Magnetic Tip
- Tri-Lobe Ergonomic Handle to Offer Optimal Balance Power and Comfort
- Dual Material Handle for Comfort and Performance
- Meets or Exceeds ASME B107.15

Gear Wrench #2 x 4" Phillips® Dual Material Screwdriver AHT 80007

Gear Wrench #2 x 16" Phillips Screwdriver AHT 80006

Gear Wrench #2 x 8" Phillips Screwdriver AHT 80010D

Image Shown: 80007



- Black oxide nonslip magnetic tip
- Speed Zone for turning in lower-torque applications
- Tri-Globe ergonomic handle offers an even balance of strength and comfort
- Oil and solvent resistant



Image Shown: 80013

Gear Wrench 1/4" x 4" Slotted Screwdriver with Hex Bolster
AHT 80013

Gear Wrench 3/8" x 8" Slotted Screwdriver with Hex Bolster
AHT 80022

Gear Wrench 3/8" x 16" Slotted Screwdriver AHT 80021



- Hardened tips give non-slip fit for use on even the most stripped screws

AutoCraft Screwdriver Set, Slotted & Phillips, 15 Piece AHT AC2015



- Slotted: 1/8" x 3", 3/16" x 4", 1/4" x 5" Phillips: #0 x 3", #1 x 4", #2 x 5"
- Precision machined magnetic tip holds screw

AutoCraft Screwdriver Set, Slotted & Phillips, 6 Piece AHT AC414

- Contents: #1 Phillips x 3/16" Slotted and #2 Phillips x 1/4" Slotted



Gear Wrench 2-Piece Offset Screwdriver Set AHT 80072

- Slotted: 3/64" x 2-1/2", 1/16" x 2-1/2", 5/64" x 2-1/2", 3/32" x 2-1/2" Phillips: #000 x 2-1/2", #00 x 2-1/2", #0 x 2-1/2" Star: T6 x 2-1/2", T7 x 2-1/2", T8 x 2-1/2"
- Non slip handles for extra torque and comfort

AutoCraft Screwdriver Set, Precision, 10 Piece AHT AC416



- Non slip handles for extra torque and comfort
- Tempered chrome vanadium steel

AutoCraft Nut Driver Set, Metric, 7 Piece AHT AC419



- SAE: 3/16", 1/4", 5/16", 11/32", 3/8", 7/16", 1/2"
- Durable reusable storage rack

AutoCraft Nut Driver Set, SAE, 7 Piece AHT AC418



- Star Screwdrivers: T10, T15, T20, T25, T30, T40
- Precision machined magnetic tip holds screw

AutoCraft Screwdriver Set, Star, 6 Piece
AHT AC415



- Precision-machined magnetic tip holds screw
- Non slip handles for extra torque



Image Shown: AC409

AutoCraft Screwdriver, Phillips, #0 x 3" AHT AC409

AutoCraft Screwdriver, Phillips, #2 x 1-1/2" AHT AC408

AutoCraft Screwdriver, Phillips, #1 x 3" AHT AC407

AutoCraft Screwdriver, Phillips, #2 x 4" AHT AC406

AutoCraft Screwdriver, Phillips, #2 x 6" AHT AC411

AutoCraft Screwdriver, Phillips, #3 x 6" AHT AC412

- Precision-machined magnetic tip holds screw
- Non slip handles for extra torque



Image Shown: AC404

AutoCraft Screwdriver, Slotted, 1/8" x 3" AHT AC404

AutoCraft Screwdriver, Slotted, 3/16" x 6" AHT AC405

AutoCraft Screwdriver, Slotted, 1/4" x 4" AHT AC400

AutoCraft Screwdriver, Slotted, 5/16" x 6" AHT AC401

AutoCraft 5/16 in. x 8 in. Slotted Screwdriver AHT AC1027

AutoCraft Screwdriver, Slotted, 3/8" x 8" AHT AC402

- Slot drive
- Phillips drive
- Torx drive
- Pozidriv drive



AutoCraft Ratchet Screwdriver AHT AC1001

AutoCraft Ratcheting Screwdriver, 21 Piece AHT AC4552



- Black Oxide nonslip magnetic tip
- Speed Zone for turning in lower-torque applications
- Tri-Globe ergonomic handle for a balance of strength and comfort
- Oil and solvent resistant

Image Shown: 80025

Gear Wrench T-10 x 4" Torx® Screwdriver AHT 80024D

Gear Wrench T-15 x 4" Torx® Screwdriver AHT 80025

Gear Wrench T-20 x 4" Torx® Screwdriver AHT 80026D

Gear Wrench T-27 x 4" Torx® Screwdriver AHT 80028D

Gear Wrench T-25 x 4" Torx® Screwdriver AHT 80027

Gear Wrench T-30 x 4" Torx® Screwdriver AHT 80029



- Star driver tips for headlights and tail lights. Interior and exterior body trim.

Krylon 2-Piece Headlight and Body Trim Star Drivers WIL W902C



HAND TOOLS

IMPACT DRIVER SETS

- Loosens Rusted, Frozen Nuts, Bolts and Screws.
- Unique design delivers over 200 ft. lbs. of "Shock Torque." Can be reversed to tighten. Can also be used with impact sockets! 1/2" sq. drive with 1/2" drive bit holder; #1, #2, #3, #4 Phillips, and 3/8" straight slot bits.
- Available Individually: 30000 1/2" Impact Tool, 30150 1/2" Bit Holder, 29630 #1 Phillips Bit, 30180 #2 Phillips Bit, 29550 #3 Phillips Bit, 30190 #4 Phillips Bit, 30170 3/8" Straight Slot Bit

Lisle 1/2" Hand Impact Tool Set LST 30200



- Unique design delivers over 200 ft. lbs. of shock torque.
- Can be reversed to tighten.
- Can also be used with impact sockets.
- 3/8" sq. drive with 3/8" drive bit holder; #1, #2, #3, #4 Phillips, and 3/8" straight slot bits.
- Easily free frozen fasteners by striking this impact driver with the appropriate socket or bit.

Lisle 3/8" Impact Driver Set with Bits LST 29200



HAND TOOLS

DRIVER BITS

- Most common size bits to accomplish all applications
- Black oxide drill bits for longer life
- Magnetic Drive guide for ease of use
- Durable storage case for increased protection
- Multi-piece accessory set good for various applications

Porter Cable Power Tools 20 Pc. Screwdriving Tic Tac Box SBD PCSD220



- Magnetic Drive Guide
- Fits in Impact Driver

Porter Cable Power Tools 34 Piece Impact Screwdriving Set SBD PCSD34



- Contents: 5/16" x 30 mm TORX®; Bits (T-10, T-15, T-20, T-25, T-27 and T-30), 5/16" x 70 mm Torx®; Bits (T-20, T-25, T-30, T-40, T-45, T-47, T-50, T-55 and T-60) and a 3/8" M x 5/16" F Bit Adapter

Gear Wrench 16-Piece TORX® Driver Set AHT 80585D



- Nine Piece Triple Square (12 point) Bits to Fit 4, 5, 6, 8, 10, 12, 14, 16 and 18 mm Sizes.
- For head bolts, brake caliper bolts, door handle screws, axle bolts and other applications. The 4 and 5mm bits have 5/16 hex drive. The 6, 8, 10 and 12 mm bits have 1/2 hex drive. The 14 and 16 mm bits have 5/8 hex drive. The 18 mm bit has a 3/4 hex drive. The three largest sizes are designed to work on tamper-proof applications.



Lisle Triple Square Set LST 60850

- Now including T-45, T-50 and T-55 sizes.
- Ten hex insert bits with two bit holders.
- Seven smallest bits are used with the 1/4" bit holder.
- Three largest bits are used with the 3/8" bit holder.
- All twelve pieces come in a convenient vinyl holder Torx sizes: T-10 thru T-55.



Lisle Master Tamper Resistant Torx Bit Set LST 26530

- Triple Square (12 point) bits to fit 6, 8, 10 and 12 mm sizes; all on 1/2" hex drives.
- Fits some head bolts, retaining bolts, disc brake calipers and other applications.
- Available Individually: 60760 6 mm Wrench, 60770 8 mm Wrench, 60780 10 mm Wrench, 60790 12 mm Wrench



Lisle 12 Point Bit Set LST 60750

Image Shown: 60860



- Designed to work on tamper-proof applications.

Lisle 5/8" Hex Drive Tamper-Proof Bit - 14 mm LST 60860

Lisle 1/4" Hex Drive Tamper-Proof Torx Bit - T-20 LST 26030

Lisle #2 Phillips Bit LST 30180

Lisle #4 Phillips Bit LST 30190

Lisle 3/8" Straight Slot Bit LST 30170

Image Shown: 30180



AutoCraft 21 Pc. Ratchet Driver Hex Bit Set AHT AC4551

- 75 Specialty Bit driver set with the most popular fastener styles so you should be ready to tackle most common jobs
- (7) slotted bits: 1/8 in., 13/64 in., 7/32 in., 15/64 in., 5/16 in (2) 2 in. bits 13/64", 15/64"
- (16) Phillips bits: no.0, (2) no.1, (4) no.2, (2) no.2 Frearson, no.3, no.3 Frearson.
- (5) 2 in bits no.1, (3)#2, #3, (4) spanner bits: no.4, no.6, no.8, no.10, (10) star bits: T8, T9, T10, T15, T20, T15, T20, T25, T27, T30, T35, T40, 2 in. bit #25
- (7) tamper resistant star bits: T10, T15, T20, T25, T27, T30, T35, (7) Square Drive #1, #2, #3, #4 (3) 2 in. bit #2, (2) #4, (7) tamper resistant hex bits: 2, 2.5, 3, 4, 5, 6, 7mm,
- (12) Hex bits: 1.5, 2, 2.5, 3, 3.5, 4, 4.5, 5, 5.5, 6, 7, 8mm, (1) 2-1/2" Magnetic bit holder, (2) Socket Adapters 1/4" and 3/8"



Performance Tool 75 Pc. 1/4" Hex Bit Set - Contains Phillips head, Flat head, Torx, and square Drive WIL W9027

* Disclaimer: Not all products listed in this catalog are stocked in all stores or DC locations. If not stocked, they are available via special order.

HAND TOOLS PRY BARS

- Puts the pry bar where you need it for best leverage. Exceeds ANSI requirements for proven strength. Indexible to over 180 degrees for greater leverage. 14 locking positions for unmatched access GearWrench, the leading innovator of Hand Tools, introduces the newest and only complete line of indexible pry bars. The new program comes with six new styles in sizes ranging from 8" to 33" in length. The head of the pry bars can be adjusted to 14 different positions for over 180 degrees of use. The indexing feature allows the user to gain more leverage in tight access applications.

Gear Wrench 16" Indexible Pry Bar AHT 82216



HAND TOOLS HAMMERS

- Tempered forged carbon steel head
- Straight grained hickory shaft

AutoCraft 16 oz. Ball Pein Hammer
AHT AC422



AutoCraft 24 oz. Ball Pein Hammer AHT AC423

- Tempered forged carbon steel head
- Straight grained hickory shaft

AutoCraft 32 oz. Rubber Mallet
AHT AC424



AutoCraft Dead Blow Hammer, 32oz AHT AC4557



- High carbon steel (straight head) chipping hammer.
- Tempered chisel on one end and point on the other.
- Black
- Durable. All-purpose.
- Shock proof handle with loop for belt hook. 10-1/2" (266.7 mm) overall length (OAL).

Forney Chipping Hammer, Straight Head FNY 70600



HAND TOOLS C-CLAMPS

- Frame design prevents flexing and buckling
- Threaded screw allows for smooth tightening

AutoCraft C-Clamps, 3 Piece
AHT AC508/W86012



Image Shown: AC1008

AutoCraft C-Clamp, Quick Release, 4 in. AHT AC1008

AutoCraft C-Clamp, Quick Release, 6 in. AHT AC1012



Image Shown: AC516

- Frame design prevents flexing and buckling

AutoCraft C-Clamp, 4" AHT AC516

AutoCraft C-Clamp, 6" AHT AC517



HAND TOOLS SHEARS

Gear Wrench Shop Shears AHT 82892



HAND TOOLS MULTI TOOLS & KNIVES

- Durable construction withstands job-site usage
- Access tools from closed position for added convenience
- Stainless steel tools for long life and rust resistance
- Soft grip panels for comfort

Dewalt Tools MT16 Multi Tool SBD DWHT71843



- Stainless steel blade for durability and rust resistance
- Thumb stud for easy opening
- Slim, lightweight handle for a comfortable grip
- Combination blade with both serrated and straight edges
- Tanto tip for piercing tough materials

Dewalt Tools Folding Pocket Knife SBD DWHT10272



Gear Wrench Gearwrench Folding Knife
AHT 82882



- Retractable blade offers variable cut depth
- Rapid load blade changing system for quick blade changes
- Folding feature for quick and easy one-handed opening/closing
- Blade storage for convenient access to new blades
- Rugged metal body for long tool life

Dewalt Tools Folding Retractable Utility Knife SBD DWHT10035L



Performance Tool Utility Knife, Folding WIL W12113



Performance Tool Utility Knife WIL W746



Dewalt Tools Utility Blade Pack SBD DWHT11004T



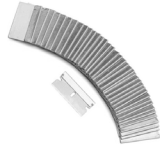
Performance Tool 5 Pk Utility Knife Blades WIL W744



* Disclaimer: Not all products listed in this catalog are stocked in all stores or DC locations. If not stocked, they are available via special order.

Wilmar Utility Knife Blades - with Dispenser WIL W7501**Performance Tool 12 Pk Single Edge Razor Blades** WIL W742

- Fits standard razor scrapers.

Performance Tool Single-Edged Razor Blades, 100-Piece WIL W747

- Professional hand files are made from premium high carbon file steel
- Engineered for durability and longevity
- Precision ground files for clean professional results
- Double cut and rasp sections for rapid stock removal on concave and flat surfaces

Century Drill & Tool File 4-In-1 Half Round 8"-Double/Rasp Cut CPE 04060

- Professional hand files are made from premium high carbon file steel
- Engineered for durability and longevity
- Precision ground files for clean professional results
- Single cut for general purpose sharpening and smoothing over flat surfaces

Century Drill & Tool Mill File 6" Bastard-Single Cut CPE 04051**Century Drill & Tool Mill File 8" Bastard-Single Cut** CPE 04052**Century Drill & Tool Mill File 10" Bastard-Single Cut** CPE 04053**Century Drill & Tool Mill File 12" Bastard-Single Cut** CPE 04054

HAND TOOLS FILES

- Ideal for shaping and smoothing metal surfaces
- Tempered short blasted alloy steel blades for strength

AutoCraft 4 Piece File Set AHT AC450

- Universal file handle assortment
- Set includes 7 inserts and one handle
- Fits most popular styles and sizes of hand files

Century Drill & Tool File Handle-Universal, Set-1-Handle And 7-Inserts CPE 04082

- Professional hand files are made from premium high carbon file steel
- Engineered for durability and longevity
- Precision ground files for clean professional results
- Double cut for rapid stock removal on flat surfaces
- Used with heavier pressure

Century Drill & Tool Mill File Flat 10" Bastard-Double Cut CPE 04057

- Professional hand files are made from premium high carbon file steel
- Engineered for durability and longevity
- Precision ground files for clean professional results
- Double cut in a spiral for rapid stock removal on hard to reach concave surfaces

Century Drill & Tool Round File 6" Bastard-Double Cut CPE 04063**Century Drill & Tool Round File 8" Bastard-Double Cut** CPE 04064**Century Drill & Tool Round File 10" Bastard-Double Cut** CPE 04065

- Professional hand files are made from premium high carbon file steel
- Engineered for durability and longevity
- Precision ground files for clean professional results
- Single cut for sharpening and smoothing
- Extra slim taper for hard to reach areas

Century Drill & Tool Slim Taper File 6"-Extra Slim-Single Cut CPE 04068**Century Drill & Tool Slim Taper File 6"-Extra, Extra Slim-Single Cut** CPE 04069

- Professional hand files are made from premium high carbon file steel
- Engineered for durability and longevity
- Precision ground files for clean professional results
- Smooth spiral cut for sharpening chain saw teeth

Century Drill & Tool Chainsaw File 7/32" X 8"-Spiral Cut CPE 04074**Century Drill & Tool Chainsaw File 5/32" X 8"-Spiral Cut** CPE 04072

- Professional hand files are made from premium high carbon file steel
- Engineered for durability and longevity
- Precision ground files for clean professional results
- Smooth spiral cut for sharpening chain saw teeth

Century Drill & Tool Chainsaw File 5/32" X 8"-Spiral Cut CPE 04072**Century Drill & Tool Chainsaw File 3/16" X 8"-Spiral Cut** CPE 04073**Century Drill & Tool Chainsaw File 7/32" X 8"-Spiral Cut** CPE 04074

- Professional hand files are made from premium high carbon file steel
- Engineered for durability and longevity
- Precision ground files for clean professional results
- Single cut for general purpose sharpening and smoothing over flat surfaces

Century Drill & Tool Mill File 8" Bastard-Single Cut CPE 04052

Image Shown: 04074

* Disclaimer: Not all products listed in this catalog are stocked in all stores or DC locations. If not stocked, they are available via special order.

HAND TOOLS SAWS

- Economy hacksaw frames have a comfortable contoured handle
- Adjustable for all 10-Inch and 12-Inch blades
- An inexpensive frame for all types of jobs



Century Drill & Tool Hacksaw Frame Economy Holds 10" And 12" Blades CPE 04935

- Heavy duty tubular hacksaw frame
- Adjustable to hold 10-Inch and 12-Inch blades
- Extra blade storage compartment



Century Drill & Tool Hacksaw Frame Heavy Duty Holds 10" And 12" Blades CPE 04925

- The miniature hacksaw frame is perfect for cutting in confined areas inside holes and flush cuts
- Blade can easily be changed to use any length flexible 1/2-Inch hacksaw blade
- 24T carbon alloy hacksaw blade included.



Century Drill & Tool Hacksaw Frame Miniature With 24T Alloy Hacksaw Blade CPE 04955

- Simple to use blade tension adjustment knob
- Two blade position allows for easy access



AutoCraft 12" Adjustable Hack Saw AHT AC444

• CENTURY Alloy Steel MEDIUM 10" X 24T

- High carbon alloy steel hacksaw blade offers a wavy tooth pattern for cutting wood and plastic soft metal and mild steel
- Wavy tooth pattern
- Made with high carbon alloy steel
- 2 per package

Century Drill & Tool Hacksaw Blade - 10" X 18T Teeth Per Inch - Carbon Alloy Steel (2 Pak) CPE 04328

Century Drill & Tool Hacksaw Blade - 10" X 24T Teeth Per Inch - Carbon Alloy Steel (2 Pak) CPE 04329

Century Drill & Tool Hacksaw Blade - 10" X 32T Teeth Per Inch - Carbon Alloy Steel (2 Pak) CPE 04330

Century Drill & Tool Hacksaw Blade - 12" X 18T Teeth Per Inch - Carbon Alloy Steel (2 Pak) CPE 4333

• CENTURY High Speed Steel COARSE 10" X 18T

- High speed steel hacksaw blade offers a wavy tooth pattern for cutting wood plastic PVC soft metal and hard metal
- For cutting 1/4-Inch to 1-Inch thick materials
- Wavy tooth pattern
- Made with high speed steel

Century Drill & Tool Hacksaw Blade - 10" X 18T Teeth Per Inch-High Speed Steel CPE 04325

Century Drill & Tool Hacksaw Blade - 10" X 24T Teeth Per Inch-High Speed Steel CPE 04326

Century Drill & Tool Hacksaw Blade - 10" X 32T Teeth Per Inch-High Speed Steel CPE 04327

• CENTURY Bi-Metal COARSE 12" X 18T

- Flexible, bends to a 1-1/2-Inch diameter
- Supple, twist 360 degree without breakage
- Shatterproof, breaks with no shattering
- Strong, load 800 pounds without distortion

Century Drill & Tool Hacksaw Blade - 12" X 18T Teeth Per Inch-Cobalt Bi-Hard CPE 04018

Century Drill & Tool Hacksaw Blade - 12" X 24T Teeth Per Inch-Cobalt Bi-Hard CPE 04024

Century Drill & Tool Hacksaw Blade - 12" X 32T Teeth Per Inch-Cobalt Bi-Hard CPE 04032

Performance Tool 3 Piece Bi-Metal Hacksaw Blades 12" x 1/2", 24 Teeth per inch WIL W739



- Used for ferrous and non-ferrous metal over 18ga - 1/8-Inch PVC and fiberglass
- Made of high speed steel
- 1/2-Inch universal shank fits all popular reciprocating saws

Century Drill & Tool Reciprocating Saw Blade - 14T X 4" HSS 5/8" Width, 0.035" Thick, 1/2" Universal Shank CPE 07814

Century Drill & Tool Reciprocating Saw Blade - 18T X 6" HSS, 7/8" Width, 0.035 Thick, 1/2" Universal Shank CPE 07865

Century Drill & Tool Reciprocating Saw Blade - 24T X 6" HSS, 5/8" Width, 0.035 Thick, 1/2" Universal Shank CPE 07866



- Cip-Saw Cobalt Bi-Metal reciprocating saw blades are designed for contractor grade applications
- Each blade consists of cobalt alloy high speed steel teeth electron beam welded to a lower alloy backbone provide a flexible, high performance blade
- For ferrous and non-ferrous metal over 18 gauge - 1/8-Inch PVC and fiberglass
- Cip-Saw blades have C66-67 Rockwell hardened teeth which operates up to 10 times faster than carbon alloy blades
- Made in the USA

Century Drill & Tool Reciprocating Saw Blade, 4" X 18T Bi-Metal Contractor, 3/4" Width, 0.035 Thickness CPE 07418

Century Drill & Tool Reciprocating Saw Blade, 6" X 6T Bi-Metal Contractor, 3/4" Width, 0.050 Thickness CPE 07606

Century Drill & Tool Recip Blade, 24T X 6" Bi-Metal Contractor 3/4" W .035 Thick 1/2" Univ Shank CPE 07624

10T CENTURY COBALT Bi-Metal Wood • Metal • Plastic

- Bi-metal jig saw blades offer a carbon alloy backbone and cobalt alloy high speed steel teeth for maximum performance
- Carbon alloy backbone allows for blade flexibility and absorbs shock when cutting difficult materials
- Cobalt high speed steel teeth offer the best wear resistance in all types of cutting materials
- Designed for performance lasting 5 times longer than carbon alloy blades

Century Drill & Tool Jig-Saw Blade, 6T Bi-Metal 3-5/8" Length, 0.040 Thickness Universal Shank CPE 06206

Century Drill & Tool Jig-Saw Blade, 10T Bi-Metal 3-5/8" Length, 0.040 Thickness Universal Shank CPE 06210

Century Drill & Tool Jig-Saw Blade, 14T Bi-Metal 2-3/4" Length .040 Thickness Universal Shank CPE 06214

* Disclaimer: Not all products listed in this catalog are stocked in all stores or DC locations. If not stocked, they are available via special order.

10T CENTURY COBALT Bi-METAL Wood • Metal • Plastic

- Bi-metal jig saw blades offer a carbon alloy backbone and cobalt alloy high speed steel teeth for maximum performance
- Carbon alloy backbone allows for blade flexibility and absorbs shock when cutting difficult materials
- Cobalt high speed steel teeth offer the best wear resistance in all types of cutting materials
- Designed for performance lasting 5 times longer than carbon alloy blades

Century Drill & Tool Jig-Saw Blade, 18T Bi-Metal 2-3/4" Length .040 Thickness Universal Shank CPE 06218

Century Drill & Tool Jig-Saw Blade, 24T Bi-Metal 2-3/4" Length .040 Thickness Universal Shank CPE 06224

- Combination sets provide a selection of blades for common applications
- Expandable case holds blades and is designed to fit in power tool kit box safe blade storage

Porter Cable Power Tools 10 Piece Wood and Metal Bi-Metal Reciprocating Saw Blade Set with Case SBD PCA4898



- Length 4", Width 1/2", 32 Teeth per Inch
- Cuts All Woods
- Package Quantity 6

Ingersoll Rand 4" x 1/2" Reciprocating Saw Blades, 32 Teeth per Inch IR P4FS6



- Length 4", Width 1/2", 24 Teeth per Inch
- Cuts All Woods
- Package Quantity 6

Ingersoll Rand 4" x 1/2" Reciprocating Saw Blades, 24 Teeth per Inch IR P4CS6



HAND TOOLS

TAPE MEASURES

- Fractional blade for quick and easy measurements
- 10' standout for improved end user efficiency
- Wide base for improved stability
- New integrated lanyard slot
- Rubber slide lock for added comfort and durability

Dewalt Tools 25' Tape Measure SBD DWHT36107



Image Shown: AC441

- Blade lock
- Pause and quick release functions

AutoCraft Tape Measure, 16' X 3/4" AHT AC441

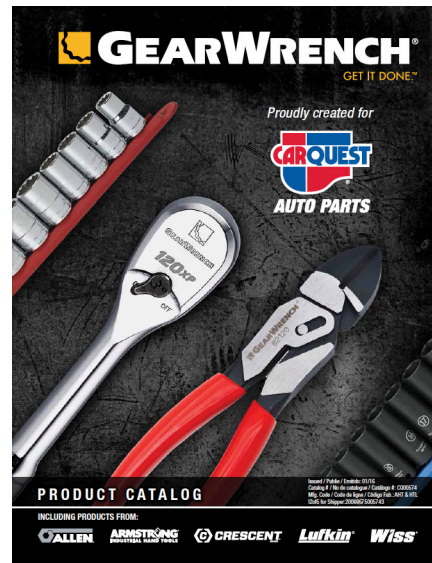
AutoCraft Tape Measure, 25' X 1" AHT AC442



HAND TOOLS MISC

- Designed for use on GM side-terminal batteries or any 5/16" hex head battery bolt
- 6 point ratcheting wrench end
- 5-1/2" length
- Insulated handle
- Reversible ratcheting wrench

AutoCraft Battery Wrench AHT AC186



For more hand tools see the Gear Wrench Catalog!

http://www.carquestprofessionals.com/catalogs/tools_equipment/Gearwrench-Catalog.pdf