



SAFETY

| | |
|---|-----------|
| Air Compressor | I7 |
| Air Horns | I7 |
| Alarms | I12 - I13 |
| Booster Cables | I4 |
| Exhaust Hoses & Connectors | I8 - I11 |
| Fire Extinguishers | I12 |
| First Aid Kits | I14 - I15 |
| Flares | I14 |
| Gas Cans / Fluid Storage Containers | I6 - I7 |
| Generators | I5 |
| Jump Starters | I1 - I3 |
| Seat Belts | I7 |
| Signal Lights | I14 |
| Slow Moving Signs | I14 |
| Spotlights | I15 |



Safety & Emergency

Index

A

| | |
|----------------------|----|
| Air Compressor | I7 |
| Air Horns | I7 |

B

| | |
|----------------------|---------|
| Back-Up Alarms | I13 |
| Booster Cables | I4 |
| Booster Packs | I1 - I3 |

C

| | |
|-------------------------------|----------|
| CARB Cans | I6 |
| Car Mounted Spot Lights | I15 |
| Cooler Carrier | I7 |
| Crushproof Exhaust Hose | I8 - I10 |

D

| | |
|-------------------|----|
| Diesel Cans | I6 |
|-------------------|----|

E

| | |
|--|-----|
| Emergency Lights | I14 |
| Extinguishers | I12 |
| EYE BEAM® Spotlight Retrofit Kit | I15 |

F

| | |
|--------------------------|-----------|
| Fire Extinguishers | I12 |
| First Aid Kits | I14 - I15 |
| Flares | I14 |

G

| | |
|--------------------------------------|----------|
| Garage Exhaust Hose & Adapters | I8 - I11 |
| Gas Cans | I6 - I7 |
| Generators | I5 |

H

| | |
|--------------------------------|-----|
| Heavy-Duty Back-Up Alarm | I13 |
|--------------------------------|-----|

J

| | |
|---------------------|---------|
| Jumper Cables | I4 |
| Jump Starters | I1 - I3 |

K

| | |
|---------------------|----|
| Kerosene Cans | I6 |
|---------------------|----|

L

| | |
|--------------------------------|-----|
| Light-Duty Back-Up Alarm | I13 |
|--------------------------------|-----|

M

| | |
|---------------------------------|-----|
| Medium-Duty Back-Up Alarm | I13 |
| Memory Saver Cord | I3 |

N

| | |
|------------------------------------|-----|
| Non-Commercial Warning Alarm | I12 |
|------------------------------------|-----|

O

| | |
|--------------------------------|-----|
| Orion® Red Safety Flares | I14 |
|--------------------------------|-----|

P

| | |
|---|---------|
| Poly Funnel for Type I Safety Can | I7 |
| Portable Water Jug | I7 |
| Powermate® Generators | I5 |
| Power Packs | I1 - I3 |

R

| | |
|--------------------------------|-----|
| Redi-Medic First Aid Kit | I14 |
| Red Safety Flares | I14 |
| Revolving Signal Lights | I14 |

S

| | |
|---|-----------|
| Safety Cans | I6 - I7 |
| Safety Flares | I14 |
| Seat Belt Kit | I7 |
| Signal Lights | I14 |
| Slow Moving Vehicle Sign | I14 |
| Spill-Proof Plastic CARB Gas Cans | I6 |
| Spotlights | I15 |
| Sure-Grip® EX Flammable Liquid Safety Cabinets | I7 |
| Survival Kits | I14 - I15 |

T

| | |
|-------------------------------------|-----|
| THE BEAM® 6" Round Spotlights | I15 |
| Truck Mount Cooler Carrier | I7 |

U

| | |
|--------------------------|-----|
| Unity® Spot Lights | I15 |
|--------------------------|-----|

W

| | |
|---------------------------|-----|
| Warning Alarm | I12 |
| Water Jug | I7 |
| Wet/Dry Vacuum Hose | I10 |

Power Station® Pro 3000 Peak Amp 12/24V Jump Starter

The PowerStation® Pro P1224 has broken into the automotive aftermarket and emerged as the new standard for professional jumpstarters. With 3000 peak amps of superior jumpstarting power, “no-spark” reverse polarity protection, 76” #2 AWG welding gauge copper cables, and 700A Nylon coated clamps, this model is an absolute must-have for the shop technician or weekend warrior searching for a user-friendly, incredibly powerful, and versatile unit to jumpstart a variety of vehicles ranging in size. The P1224 easily switches from powering a 12V battery system to powering a 24V battery system with the turn of a knob, and contains LED indicators highlighting the internal charge-status of the unit. The P1224 also has a 12V DC outlet with overload/short circuit protection so you can keep your accessories powered up while in the field, and comes with a 1A automatic charger.

- Designed for use on 12V and 24V Battery Systems
- Contains Two 17Ah High Power Batteries
- 3000 Peak Amps; 600 Cranking Amps - 12V
- 1500 Peak Amps; 300 Cranking Amps - 24V
- “No-Spark” Reverse-Polarity Protection to Ensure Safer Jumpstarting Conditions
- 12V DC Outlet with Overload and Short Circuit Protection to Power Accessories
- 76” #2 AWG Welding Gauge Copper Cables
- 700A Nylon Coated Clamps
- Comes with 4’ DC to DC Power Transfer Cord

EQP P1224 3000 Peak Amp 12/24V Jump Starter



Power Station® Pro 1700 Peak Amp 12V Jump Starter

Prepare to impress friends and customers alike as you provide multiple jump starts between charges and take on the most demanding professional tasks your working environment has to offer with ease using the rugged and dependable P1700 from PowerStation® Pro. This durable and long-lasting unit is powered by a 22Ah battery and was designed with an internal automatic charger to make recharging a fast and simple process that anyone can follow. With 34” #4 AWG copper cables and 500A nylon clamps, you can rest easy knowing you will always have the power you need to get the job done. Dealerships, fleet services, marinas, garages – all of these environments and more will require the use of a jumpstarter...make sure the one you purchase is capable of providing the power you need, everytime you need it. The P1700 also features a convenient USB Port, perfect for charging high-end electronics such as smart phones and tablets.

- 22Ah High Power Battery
- 1700 Peak Amps; 400 Cranking Amps
- Built-In Automatic Charger
- 34” #4 AWG Copper Cables
- 500A Nylon Coated Clamps
- 12V DC Outlet with Overload/Short Circuit Protection and 5V USB Port to Power Accessories
- Comes with 4’ DC to DC Power Transfer Cord

EQP P1700 1700 Peak Amp 12V Jump Starter



Power Station® Pro 1000 Peak Amp 12V Jump Starter

Looking for a high-octane, easy to use, compact portable power unit at an amazing value? The entry-level P1000 is your solution, and then some! This powerful jump starter contains a 17Ah battery and provides 1000 Peak Amps of advanced boosting capability. This unit is perfect for the customer who never wants to be left stranded with a dead battery, and can be used to complete a variety of tasks within any shop environment. You will always know the status of the P1000 battery thanks to easy-to-understand LED indicators, and in turn, you will always know when the automatic internal charger feature needs to be put to good use! The P1000 comes with a 4’ DC to DC Power Transfer Cord, a 12V DC outlet, and a USB Port that can charge your high-end electronic accessories.

- 17Ah High Power Battery
- 1000 Peak Amps; 275 Cranking Amps
- Built-In Automatic Charger
- 34” #4 AWG Copper Cables
- 400A Coated Clamps
- 12V DC Outlet with Overload and Short Circuit Protection and 5V USB Port to Power Accessories
- Comes with 4’ DC to DC Power Transfer Cord

EQP P1000 1000 Peak Amp 12V Jump Starter





Jump N Carry® 3400 Peak Amp 12/24V Jump Starter

Need powerful, multi-volt charging in a portable unit? Look no further than the JNC1224. With an easy change between voltage settings, it packs a heavy-hitting 3400 peak amps of starting power in 12 volt mode and 1700 peak amps of starting power in 24 volt mode. Convenient as it is powerful, its built-in automatic charger can provide up to 24 hour/365 day continuous charging to ensure it is always ready to meet your needs.



- 3400 Peak Amps - 12V
- 850 Cranking Amps - 12V
- 1700 Peak Amps - 24V
- 425 Cranking Amps - 24V
- Clore PROFORMER Battery Technology
- 46" #2 AWG Welding Cable Leads
- Industrial-Grade Hot Jaw Clamps
- Built-In Automatic Charger
- Voltmeter Provides Charge Status of Onboard Battery
- 12V DC Outlet to Power Accessories
- 1 Year Limited Warranty

SLR JNC1224 3400 Peak Amp 12/24V Jump Starter

Truck Pac™ 3000 Peak Amp 12/24 Volt Jump Starter

Easy-to-use and versatile, the ES1224 switches from 12 to 24 volts with the turn of knob, all without sacrificing one bit of power. With 3000 Peak 12 volt amps and 1500 Peak 24 volt amps, the Truck PAC™ will get the job done. Features automatic recharging, 60" cables and Industrial Grade Hot Jaw™ clamps for efficient power transfer to the vehicle. AWS Advanced Warning System™ alerts the operator to unsafe jump starting conditions.



- 3000 Peak Amp/800 Cranking Amp in 12V Mode
- 1500 Peak Amp/400 Cranking Amp in 24V Mode
- ES Series Battery Designed Specifically for Vehicle Jump Starting
- Automatic Recharging
- Integrated Voltage Selection Switch
- LED Battery Status Indicator
- 60" #2 AWG Cables
- Industrial Grade Hot Jaw™ Clamps
- AWS Advanced Warning System™
- DC Outlet to Power 12 Volt Accessories
- 1 Year Limited Warranty

SLR ES1224 3000 Peak Amp 12/24 Volt Jump Starter

SLR ESA26 Charger w/ Small Jack for ES1224

Jump N Carry® 3000 Peak Amp 12 Volt Jump Starter

Our high capacity 12 volt Truck PAC™ model, the ES6000, delivers 3000 peak amps of starting power. Features ES Series batteries, specifically developed for vehicle starting applications. ES Series batteries deliver high output current, extended cranking power, numerous jumps per charge and a long service life. The ES6000 also features extra-long cables for ideal positioning during jump starting and industrial grade Hot Jaw™ clamps for maximum power transfer to the vehicle.



- 3000 Peak Amps
- ES Series Battery Designed Specifically For Vehicle Jump Starting
- Automatic Recharging
- LED Battery Status Indicator
- 54" #4 AWG Cables
- Industrial Grade Hot Jaw™ Clamps
- DC Outlet to Power 12 Volt Accessories
- 1 Year Limited Warranty

SLR ES6000 3000 Peak Amp 12 Volt Jump Starter

SLR ESA217 Charger w/ Small Jack for ES5000 & ES6000

Jump N Carry® 1700 Peak Amp 12 Volt Jump Starter

The JNC660 delivers 1700 peak amps and 425 cranking amps of starting power and weighs just 18 lbs. Perfect for a variety of professional starting environments, including automotive service, fleet service, auto dealerships, auto auctions, marinas, implement dealerships and more. Give it a try and you'll see why it's the choice of Pros the world around.



- 1700 Peak Amp
- 425 Cranking Amp
- Clore PROFORMER battery technology
- 46" #4 AWG Welding Cable Leads
- Industrial-Grade Clamps
- Built-In Charger
- Automatic Charging
- Voltmeter Provides Charge Status of Onboard Battery
- 12V DC Outlet to Power Accessories
- 1 Year Limited Warranty

SLR JNC660 1700 Peak Amp 12 Volt Jump Starter

Booster Pac™ 1500 Peak Amp 12 Volt Jump Starter

Bring on the power! With a high performance battery and up to 1500 Peak Amps, the ES5000 is the Booster PAC for professionals who need serious starting power. Multiple jumps between charges and 43" cables make the ES5000 as convenient as it is powerful.



- 1500 Peak Amp
- 400 Cranking Amp
- ES Series Battery Designed Specifically for Vehicle Jump Starting
- Automatic Recharging
- LED Battery Status Indicator
- 43" #4 AWG Cables
- Industrial Grade Hot Jaw™ Clamps
- DC Outlet to Power 12 Volt Accessories
- 1 Year Limited Warranty

SLR ES5000 1500 Peak Amp 12 Volt Jump Starter

SLR ESA217 Charger w/ Small Jack for ES5000 & ES6000

Booster Pac™ 900 Peak Amp 12 Volt Jump Starter

Easy to use and lightweight, it is the ideal entry level professional jump starter. Its compact size, rugged case and ability to jump up to 5 vehicles on a single charge make the ES2500 a perfect companion for any situation in which you need portable power.



- 900 Peak Amps
- ES Series Battery Designed Specifically for Vehicle Jump Starting
- Automatic Recharging
- LED Battery Status Indicator
- 21" #4 AWG Cables
- Industrial Grade Hot Jaw clamps
- DC Outlet to Power 12 Volt Accessories
- 1 Year Limited Warranty

SLR ES2500 900 Peak Amp 12 Volt Jump Starter

SLR ESA22 Charger w/ Small Jack for ES2500

Jump N Carry® 1100 Peak Amp 12 Volt Jump Starter

A perfect entry-level professional unit, the JNC400 combines power and ease-of-use in a durable, reliable unit. It features Clore PROFORMER battery technology, specifically designed for vehicle jump starting. With a built-in charger, convenient battery status gauge, impact resistant case and 1100 Peak Amps of starting power, it meets a wide variety of shop needs.



- 1100 Peak Amp
- 325 Cranking Amp
- Clore PROFORMER Battery Technology
- 23" #4 AWG Welding Cable Leads
- Industrial-Grade Clamps
- Built-In Charger
- Voltmeter Provides Charge Status of Onboard Battery
- 12V DC Outlet to Power Accessories
- 1 Year Limited Warranty

SLR JNC4000 1100 Peak Amp 12 Volt Jump Starter

Jump N Carry® 900 Peak Amp 12 Volt Ultra-Portable Jump Starter

A great combination of power and portability, the JNC300XL packs the punch of 900 Peak Amps of starting power into a unit that weighs just 9 lbs. to start virtually any passenger vehicle. This store-anywhere, use-anywhere unit features Clore PROFORMER battery technology, specifically designed for vehicle jump starting. It also features a high intensity work light to aid in nighttime and other emergency jump starting situations.



- 900 Peak Amps
- 225 Cranking Amps
- 27" #4 AWG Welding Cable Leads
- Full-Size Clamps To Penetrate Battery Corrosion
- LED Battery Status Indicator
- High Intensity Work Light
- Grip-Lock Clamp Storage
- DC Outlet To Power 12 Volt Accessories
- Includes Wall Charger and Male-Male 12V Extension Cord
- 1 Year Limited Warranty

SLR JNC300XL 900 Peak Amp 12 Volt Ultra-Portable Jump Starter

Memory Saver Cord

Turns any jump starter with a power port into a vehicle memory saver. Used in conjunction with a jump starter, it will preserve vehicle codes and electronic presets while a vehicle battery is disconnected. Compatible with all Booster PAC™, Truck PAC™ and Jump-N-Carry® models except ES8000. 90 day limited warranty.

SLR ESA30 Memory Saver Cord



Booster Cable Comparison

| Model | Length | Cable Construction | Cable Gauge |
|--------|--------|--------------------|-------------|
| Best | | | |
| 82930 | 25' | 100% Copper | 1 |
| 82920 | 20' | 100% Copper | 2 |
| 82910 | 20' | 100% Copper | 4 |
| Better | | | |
| 81840 | 20' | Copper Clad | 4 |
| 81830 | 20' | Copper Clad | 6 |
| Good | | | |
| 81820 | 12' | Copper Clad | 8 |
| 81810 | 12' | Copper Clad | 10 |

Heavy-Duty Booster Cables

100% copper heavy-duty booster cables. Color coded tangle-free dual cable construction.

- CBA 82910 Heavy-Duty Booster Cables, 20', 4 Gauge, Blk/Wht
- CBA 82920 Heavy-Duty Booster Cables, 20', 2 Gauge, Blk/Red
- CBA 82930 Heavy-Duty Booster Cables, 25', 1 Gauge, Blk/Red



82930

Medium-Duty Booster Cables

Medium-duty booster cables. Tough PVC tangle-free dual cable construction with copper clad conductor.

- CBA 81830 Medium-Duty Booster Cables, 16', 6 Gauge, Blk/Org
- CBA 81840 Medium-Duty Booster Cables, 20', 4 Gauge, Blk/Wht



81840

Light-Duty Booster Cables

Light-duty booster cables. Tough PVC tangle-free dual cable construction with copper clad conductor.

- CBA 81810 Light-Duty Booster Cables, 12', 10 Gauge, Blk/Blk
- CBA 81820 Light-Duty Booster Cables, 12', 8 Gauge, Blk/Yel



81810

Booster Cable Clamps, (Sets of 2)

Booster cable clamps are designed to grip securely to side terminal and/or post terminal batteries for maximum current carrying capacity. All booster cable clamps are color coded (Red/Black) for safety and visual appeal.

- CBA 83250 Booster Cable Clamps, 250 Amp
- CBA 83500 Booster Cable Clamps, 500 Amp
- CBA 83600 Booster Cable Clamps, 600 Amp



83500

Powermate® 6500W, Electric Start Generator

- 420cc OHV Gas Engine
- 120V 5-20R Duplex Outlet
- 120-240V L14-30R Outlet
- 120V L5-30R Outlet
- 12 volt DC Outlet
- Roll Cage Design with 10" Never Flat Wheel Kit
- Dual Folding Handles for Easy Storage
- Hour Meter & AVR
- Comes with Battery
- 2 Year Limited Warranty (Residential Use)
- 90 Day Limited Warranty (Commercial Use)



Specifications:

| | |
|------------------------------------|--------------------------|
| Running Watts | 6500 |
| Maximum Watts | 8125 |
| Low Oil Shutdown | Yes |
| Electric Start | Yes |
| Battery Charger | No |
| Automatic Voltage Regulation | Yes |
| Gas Tank Size | 6.5 Gallons |
| Run Time @50% Load | 9 hours |
| Dimensions(LxWxH) | 31.69" x 23.03" x 22.83" |
| Weight | 205.7 lbs. |

GEN PM0106507 Powermate® 6500W, Electric Start Generator
GEN PMC106507 Powermate® 6500W, Electric Start Generator (CARB Compliant Model)

Powermate® 3000W, Manual Start Generator

- 212cc OHV Gas Engine
- 120V 5-20R Duplex Outlet
- 120V-240V L14-30R Outlet
- 12V DC Outlet
- Voltage Selector Switch
- Roll Cage Design
- Dual Folding Handles for Easy Storage
- Mobility Kit with 8" Never Flat Wheel Kit
- Hour Meter & AVR
- 2 Year Limited Warranty (Residential Use)
- 90 Day Limited Warranty (Commercial Use)



Specifications:

| | |
|------------------------------------|--------------------------|
| Running Watts | 3000 |
| Maximum Watts | 3750 |
| Low Oil Shutdown | Yes |
| Elec. Start | No |
| Battery charger | No |
| Automatic voltage regulation | Yes |
| Gas Tank Size | 4 Gallons |
| Run time @50% load | 11 hours |
| Dimensions(LxWxH) | 27.56" x 19.69" x 19.69" |
| Weight | 117 lbs. |

GEN PM0103007 Powermate® 3000W, Manual Start Generator
GEN PMC103007 Powermate® 3000W, Manual Start Generator (CARB Compliant Model)

Powermate® 5000W, Manual Start Generator

- 389cc OHV Gas Engine
- 120V 5-20R Duplex Outlet
- 120-240V L14-30R Outlet
- 12V DC Outlet
- Roll Cage Design with 10" Never Flat Wheel Kit
- Dual Folding Handles for Easy Storage
- Hour Meter & AVR
- 2 Year Limited Warranty (Residential Use)
- 90 Day Limited Warranty (Commercial Use)



Specifications:

| | |
|------------------------------------|--------------------------|
| Running Watts | 5000 |
| Maximum Watts | 6250 |
| Low Oil Shutdown | Yes |
| Electric Start | No |
| Battery Charger | No |
| Automatic Voltage Regulation | Yes |
| Gas Tank Size | 6.5 Gallons |
| Run Time @50% Load | 11 hours |
| Dimensions(LxWxH) | 31.69" x 23.03" x 22.83" |
| Weight | 190.7 lbs. |

GEN PM0105007 Powermate® 5000W, Manual Start Generator
GEN PMC105007 Powermate® 5000W, Manual Start Generator (CARB Compliant Model)

Powermate® 1200W, Manual Start Generator

- 99cc OHV Gas Engine
- 120V 5-15R Duplex Outlet
- 12V DC Outlet
- Roll Cage Design
- Dual Folding Handles for Easy Storage
- Includes Battery & Charging Cables
- 1 Year Limited Warranty



Specifications:

| | |
|------------------------------------|--------------------------|
| Running Watts | 1200 |
| Maximum Watts | 1500 |
| Low Oil Shutdown | Yes |
| Electric Start | No |
| Battery Charger | No |
| Automatic Voltage Regulation | No |
| Gas Tank Size | 1.3 Gallons |
| Run Time @50% Load | 9.5 hours |
| Dimensions(LxWxH) | 20.28" x 15.75" x 18.11" |
| Weight | 64 lbs. |

GEN PM0101207 Powermate® 1200W, Manual Start Generator



REGULATORY INFORMATION

As of January 1, 2009, all new portable fuel containers manufactured must be compliant with new regulatory standards.

In brief, the regulations require the following:

- * An automatic closure spout. This means, when a spout is not engaged for pouring it must automatically return to a closed position.
- * A permeation resistant container to reduce hydrocarbon emissions to the acceptable .3 grams/gallon/day.
- * Child resistant features as outlined by the Children's Gasoline Burn Prevention Act.

The 1/1/09 regulation requirements may be explored in detail here EPA Rules and Regulations: Control of Hazardous Air Pollutants From Mobile Sources Final Rule (Portable Fuel Containers are section VII, page 8499.)

To learn more about hydrocarbon emissions and air quality, please visit www.epa.org or your local state environmental agency.

5 Gallon Kerosene CARB Can

Blue plastic 5 gallon kerosene container. Durable and built to handle constant use. Flexible, self-storing reversible spout. This can is UL approved and meets CARB and OTC standards and is legal for use in CARB regulated states.

CPM 7600 5 Gallon Kerosene Carb



Spill-Proof Plastic Gas Cans

Replacement spill proof system spout. The auto shut-off spout is childproof and prevents escape of harmful vapors during transportation or storage. This spout fits models, 1200, 2300, 5600 Gas Cans, 7600 Kerosene and 8600 diesel. is UL approved and meets CARB and OTC standards and is legal for use in CARB regulated states.

CPM 4230 Replacement CARB Spout – Fits 1200, 2300, 5600 Gas Cans, 7600 Kerosene and 8600 Diesel



5 Gallon Diesel CARB Can

Bright yellow plastic 5 gallon diesel container. Durable and built to handle constant use. Flexible, self-storing reversible spout. This can is UL approved and meets CARB and OTC standards and is legal for use in CARB regulated states.

CPM 8600 5 Gallon Diesel Carb



6 Plus Self-Venting Gas Cans

UL approved. Made of high-density, crushproof, rustproof polyethylene. The sleek low profile has rounded corners and a low center of gravity. Leather-like finish makes container less slippery even in wet weather. Each can comes with Versaflex® pouring spout.

CPM 50841 6 Plus Self-Venting Gas Can, 6-1/8 Gallon



Spill-Proof Plastic CARB Gas Cans

Spill-proof plastic gas cans are great for refueling on-road vehicles, power equipment, snow-blowers, ATVs and lawn mowers. The auto shut-off spout is childproof and prevents escape of harmful vapors during transportation or storage. This can is UL approved and meets CARB and OTC standards and is legal for use in CARB regulated states.

CPM 1200 Spill Proof Plastic Gas Can, 1 Gallon
CPM 2300 Spill Proof Plastic Gas Can, 2 Gallon
CPM 5600 Spill Proof Plastic Gas Can, 5 Gallon



Type II Metal Safety Can

Made of galvanized steel, this can meets OSHA requirements. Used to reduce the danger of explosion while dispensing flammable liquids through a flexible metal spout. Comes with a brass flame arrestor in the filler opening and pour spout. UL, ULC and FM approved. 12" spout, 5/8" outer diameter. 13-1/2" tall, 12-1/2" bottom diameter.

CPE 36021 Type II Metal Safety Can, 5 Gallon



Type I Metal Safety Cans

These cans meet OSHA requirements and are UL listed. Type I safety cans are for the safe carrying and storing of gasoline and flammable liquids. Made of galvanized steel. The flame arrestor cools the air entering the can and keeps the internal vapors below the flash point. UL, ULC, and FM approved.

- CPE 36018 Type I Metal Safety Can, 1 Gallon
CPE 36019 Type I Metal Safety Can, 2 Gallon
CPE 36020 Type I Metal Safety Can, 5 Gallon



Poly Funnel for Type I Safety Can

Designed for use with metal Type I safety cans. FM approved, self-locking, HDPE. 10-1/2" long with a 5/8" small end interior diameter and an outer diameter of 7/8". Fits snugly on the can or may be detached.



- CPE 36035 Poly Funnel for Type I Safety Can



Sure-Grip® EX Flammable Liquid Safety Cabinets

Fully compliant Sure-Grip® EX Safety Cabinets help you safely store and organize flammable liquids such as fuels, chemicals, solvents, paints, and cleaning agents. They are specially designed to protect personnel and facilities from the risk of fire. Fire resistant, high performance cabinets feature all welded, double-walled 18 ga. steel with 1-1/2" of insulating air space and a fail-safe 3 point stainless steel bullet latching system for optimum longevity. Exclusive U-Loc™ handle can be key locked or accepts optional padlock to secure hazardous contents. Haz-Alert™ reflective warning labels offer visibility under dark conditions. For added safety, SpillSlope™ shelves direct spills into leakproof sump. Dual vents & leveling feet included. Justrite FM approved "Flammable Safety Cabinets" meet and exceed the REQUIRED State/Federal codes & regulations as stated by OSHA 29 Code of Federal Regulations & NFPA 30 for storing Flammables & Combustibles. All Flammable Cabinets are backed by a 10 year limited warranty. Not for sale in Canada.

- CPM 894500 Sure-Grip® EX Flammable Liquid Safety Cabinets, Manual
CPM 894520 Sure-Grip® EX Flammable Liquid Safety Cabinets, Self-Close

Portable Water Jug

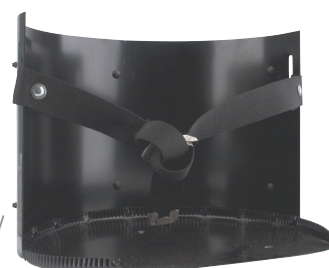
Made of high density polyethylene and features a carrying handle and wide-mouth opening for easy pouring and filling. 4.5 gallon.

- CPM 9119 Portable Water Jug



Truck Mount Cooler Carrier

Unit is designed for mounting upon service vehicles to provide safe & secure transportation of 5 gallon portable water coolers. The carrier features heavy gauge steel construction, satin black powder coat finish, & durable nylon buckle/tab front mounted security straps.



- CPF 42207 Truck Mount Cooler Carrier

Seat Belt Kit

Conforms to Federal Motor Vehicle Safety Standard #209. Includes belts, universal mounting bracket kit and "Easy-to-Install" instructions. Black in color.

- CPS 80075 Seat Belt Kit, 90"
CPS 80076 Seat Belt Kit, 74"



12 Volt DC Compressor

Use to inflate tires, sports balls, pool toys, etc. Has 10' power cord, cigarette lighter adapter, 2' air hose, red flashing safety light and 3 adapters for universal inflation. Rated 300 psi.

- CPS 82890 12 Volt DC Compressor



Portable Air Horns

Disposable, compressed air horn provides loud alert tone for emergencies or to support outdoor sports teams. 8 oz. can.

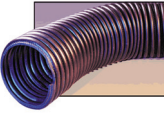
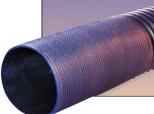

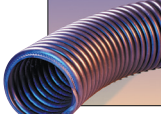
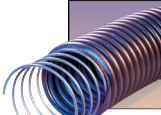

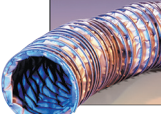
- CPF 40147 Portable Air Horn
CPF 40148 Replacement Cartridge for 40147







Garage Exhaust Hose





CARQUEST® is pleased to offer a complete line of service products related to the ventilation of garage exhaust fumes. The Crushproof garage exhaust hose has been designed to withstand up to 600°F tailpipe exhaust temperatures, while maintaining maximum flexibility and durability. The Hose Selection Chart and Adapter Application Charts below detail the recommended sizes to use with your application. Made in the USA. ACT hose with a wire inside to prevent kinking. Also available with just 30" of wire.

| Hose Styles | | Hose Sizes (Mfg. CPE) | | | | | | |
|--|---|----------------------------|---------------------------------|-----------------------------|---|--|--|---------------------------------|
| | | 2" (50 mm) Motorcycle | 2-1/2" (63 mm) Compact Car | 3" (76 mm) Average Car | 3-1/2" (89 mm) Average Car | 4" (102 mm) Light Truck | 5" (125 mm) Diesel Truck | 6" (150 mm) Diesel Truck |
|  | Flared End Made exclusively for cars and small trucks. A flared end on each length permits connection to two or more lengths of the same size hose. | 30130 2" Flarelock Hose | 30131 2-1/2" Flarelock Hose | 30132 3" Flarelock Hose | 30091 3-1/2" X 11' Flared End Exhaust Hose | 30133 4" Flarelock Hose | | |
|  | Unihose Hose and tailpipe adapter made as one continuous piece. Will not accept other adapters. | | 30092 2-1/2" Hose w/ Adapter | 30095 3" Hose w/ Adapter | | 30096 4" Hose w/ Adapter | | |
|  | Super Flexible Accordion-like design allows for extra stretch. Compressed rubber hose prevents kinking at a 180° bend over diesel stack. | | | | | 30135 4" Super Flex Hose | 30136 5" Super Flex Hose | |
|  | ACT Designed specifically for use with diesel and gasoline trucks. Hoses are perfect for overhead exhaust system usage. | | | | | 30098 4" x 11' Exhaust Hose 30101 4" x 20' Exhaust Hose | 30134 5" Non-flared Hose | 30102 6" x 11' Exhaust Hose |
|  | ACT w/ Wire Reinforced ACT hose with a wire inside to prevent kinking. Also available with just 30" of wire. | | | | | 30077 4" Hose w/ 11' of Wire 30111 4" Hose w/ 30" of Wire | 30137 5" Hose w/ 11' of Wire 30112 5" Hose w/ 30" of Wire | 30138 6" Hose w/ 11' of Wire |
|  | Stainless Steel For Dynamometers and other high performance applications. Light, flexible and will withstand 1,650° F | | | | | 30103 4" Steel Exhaust Hose | 30104 5" Steel Exhaust Hose | |
|  | Fabric/Wire Lightweight hose for overhead exhaust systems. The hose will withstand 600° F | | | | | 30105 4" Fabric/Wire Hose | 30106 5" Fabric/Wire Hose | |

| Hose Styles (Mfg. CPE) | | Hose Sizes | | |
|---|---|---|--|--|
| | | 4" (102 mm) Light Truck | 5" (125 mm) Diesel Truck | 6" (150 mm) Diesel Truck |
|  | Dyno Designed specifically for high temperatures when used with dynamometers with a fan-assisted system. A blend of rubber allows hose to withstand the high temperature of DYNO testing. | 30139 4" Dynamometer Hose | | |
|  | Reel Hose Designed for hose reels and overhead systems. First 5' is crushproof to prevent damage. Includes listed adapter. | 30163 4" Reel Hose w/ adapter 30152 or 30149 | 30164 5" Reel Hose w/ adapter 30152 | 30165 6" Reel Hose w/ adapter 30114 |

Garage Exhaust Hose Adapters

The Crushproof brand adapters are designed to fit almost any vehicle on the road today. Keep in mind that about a quarter of all vehicles have dual exhaust or twin exhaust systems. Refer to the size chart below to make sure you get the right adapters for your application. A hook and chain assembly is attached to each adapter to allow it to be fixed to the frame of the vehicle. This ensures that the fitting stays in place. Made in the USA. Designed for easy adapting to all sorts of vehicle tailpipes. Tail pipe adapter 2" (50 mm) or smaller.

| Garage Exhaust Hose Adapters | | Hose Sizes (Mfg. CPE) | | | | |
|---|--|--|--|---|--|---|
| | | 2" (50 mm) Motorcycle | 2-1/2" (63 mm) Compact Car | 3" (76 mm) Average Car | 3-1/2" (89 mm) Average Car | 4" (102 mm) Light Truck |
|  | 2.5" Straight Pipe Adapter w/Hook & Chain Designed for easy adapting to all sorts of vehicle tailpipes. Tail pipe adapter 2" (50 mm) or smaller. | 30144 Adapter threads over 2" hose. | 30144 Included sleeve threads over the adapter and over the hose. | 30144 Adapter threads into the hose. | | |
|  | 3" Straight Pipe Adapter w/Hook & Chain Designed for easy adapting to all sorts of vehicle tailpipes. Tail pipe adapter 2-1/2" (63 mm) or smaller. | | 30145 Included sleeve threads into the adapter and over the hose. | 30145 Adapter threads over hose. | 30145 Adapter threads into hose. Very tight fit. | |
|  | 3.5" Straight Pipe Adapter w/Hook & Chain Designed for easy adapting to all sorts of vehicle tailpipes. Tail pipe adapter 3" (76 mm) or smaller. | | | 30146 Adapter threads over hose. | 30146 Included sleeve threads into the adapter and into the hose. | 30146 Adapter threads into the hose. |
|  | 4" Straight Pipe Adapter w/Hook & Chain Designed for easy adapting to all sorts of vehicle tailpipes. Tail pipe adapter 3-1/2" (89 mm) or smaller. | | | | 30147 Adapter threads over hose. Very tight fit. | 30147 Adapter threads into the hose. |



Garage Exhaust Hose Adapters

The Crushproof brand adapters are designed to fit almost any vehicle on the road today. Keep in mind that about a quarter of all vehicles have dual exhaust or twin exhaust systems. Refer to the size chart below to make sure you get the right adapters for your application. A hook and chain assembly is attached to each adapter to allow it to be fixed to the frame of the vehicle. This ensures that the fitting stays in place. Made in the USA. Designed for easy adapting to all sorts of vehicle tailpipes.

| Adapter Sizes | | Hose Sizes (Mfg. CPE) | | | | | | |
|--|--|-----------------------|----------------------------|--------------------------------|----------------------------|---|---|---|
| | | 2" (50 mm) Motorcycle | 2-1/2" (63 mm) Compact Car | 3" (76 mm) Average Car | 3-1/2" (89 mm) Average Car | 4" (102 mm) Light Truck | 5" (125 mm) Diesel Truck | 6" (150 mm) Diesel Truck |
|  | 30152 Diesel Stack Adapter 4 1/2" Fits Diesel stacks 5-1/2" outside diameter or smaller | | | | | 30152 Adapter threads over the hose. < 5.5" Stack | 30152 Adapter threads into the hose. < 5.5" Stack | 30114 Adapter threads over the hose. < 5.5" Stack |
| | 30114 6" Diesel Truck Pipe Adapter Fits Diesel stacks 5-1/2" outside diameter or smaller | | | | | | | |
| | 30115 8" Diesel Truck Pipe Adapter Fits Diesel stacks 7-1/2" outside diameter or smaller | | | | | | | |
|  | 30143 3.5" Straight Pipe Dyno High temperature adapter for use with dynamometer hose #30139. A blend of rubber allows adapter to withstand the high temperature of dyno testing. | | | 30143 | | | | |
|  | 30150 Universal Adapter 2.5"/3.5" Adapter threads into the hose. | 30151 | 30150 / 30151 | | | | | |
| | 30151 Universal Adapter 2"/3" Adapter threads over the hose. | | | | | | | |
|  | 30148 3"x6" Twin Oval Adapter | | | Adapter threads over the hose. | | Adapter threads into the hose. | | |
| | 30149 3"x8" Twin Oval Adapter | | | | | | | |
| | 30113 3.5" x 8.5" Twin Oval Dyno Adapters | | | | | | | |
|  | Rubber "Y" Connectors | 30107 | 30161 | 30160 | | | | |
| | Allows for three hoses to be joined together. | | | | | | | |
|  | Aluminum "Y" Connectors | | | | | 30118 | | |
| | Allows for three hoses to be joined together. | | | | | | | |

Wet/Dry Vacuum Hose

Made from high quality EPDM rubber, this vacuum hose is virtually indestructible. Stands up to abrasion and kinking. Will bounce back to original shape after being crushed. 2-1/4" OD cuffs fit most wet/dry vacuums.

CPE 30166 Wet/Dry Vacuum Hose



Garage Exhaust Hose Connectors & Kits

Splice connectors join two sections of hose together when there is no flarelock available. Door ports allow hose to fit inside them when in use and are available in 2.5", 3" and 4". Larger ports are typically installed with a custom system and are therefore not available. Made in the USA. Rubber fittings used to join multiple sections of hose that do not flarelock.

| Connectors & Kits | | Hose Sizes (Mfg. CPE) | | | | | |
|---|--|--|-------------------------------|--|---|--------------------------------|---|
| | | 2" (50 mm) Motorcycle | 2-1/2" (63 mm) Compact Car | 3" (76 mm) Average Car | 4" (102 mm) Light Truck | 5" (125 mm) Diesel Truck | 6" (150 mm) Diesel Truck |
|  | Rubber Splice Connectors Rubber fittings used to join multiple sections of hose that do not flarelock. | 30108 | 30153 | 30154 | 30109 | | |
|  | Aluminum Splice Connectors Aluminum fittings used to join multiple sections of hose that do not flarelock. | | | 30155 | 30156 | 30116 | 30117 |
|  | Aluminum Pulley Elbows Aluminum elbow for use with overhead, power ventilated exhaust systems. | | 30119 | 30162 | 30120 | 30121 | 30122 |
|  | Rubber Under-Floor Elbows Rubber elbow for use with underfloor, power ventilated exhaust systems. | | 30123 | 30124 | | | |
|  | Aluminum Overhead Duct Connector Overhead connectors join hose to metal duct work. Aluminum connector for use with overhead, power ventilated exhaust systems. Damper included on 30128 to shut off opening when not in use. | | | 30125 | 30126 | 30127 30128 w/Damper | 30117 |
|  | Door Port Allows hose to be vented through the door. | | 30157 2.5" Rubber | 30158 3" Aluminum | 30159 4" Aluminum | | |
|  | Telescoping System Telescoping system provides a simple, out-of-the-box solution for servicing cars and trucks if you have an overhead exhaust system. Connects to 5" "T" or stub on 158" to 198" overhead system. 3", 4.5" and 6" hoses fit inside each other | | | 30129 Telescoping Exhaust Hose | | | |
|  | Dual Exhaust Y-Assembly Y-Assembly kits include a Y-connector, 2 each 4' lengths of hose and 2 adapters. Made in the USA. Designed for converting single hose into dual exhaust system. 30142 includes oval tailpipe adapter 3" x 8"(30150). | | 30167 | 30140 30142 3" Y-Assembly w/30150 | 30141 | | |
| Service Station Kits Service station kits include everything needed for a basic out-the-door exhaust set-up for single or dual exhaust cars. Made in the USA. | | 30168 2.5" Service Station Kit Contains: 2 - 4' x 2 1/2" Hose 1 - 6' x 2 1/2" Hose 1 - 30161 & 30153 2 - 30144 | |  | 30169 3" Service Station Kit Contains 2 - 4' x 3" Hose 1 - 6' x 3" Hose 1 - 30160 & 30154 2 - 30145 | |  |

Fire Extinguisher Comparison Chart

| PN | AGENT WEIGHT | UL RATING | EXTINGUISHING AGENT | USCG APPROVED | RECHARGEABLE | DOT* APPROVED |
|-------|--------------|-----------|-------------------------------------|----------------------|--------------|---------------|
| 40751 | 20 lbs. | 10A-80B:C | Monoammonium Phosphate Dry Chemical | w/292474 CPM bracket | Yes | Yes |
| 40750 | 10 lbs. | 4A-6B:C | Monoammonium Phosphate Dry Chemical | w/366242 CPM bracket | Yes | Yes |
| 40752 | 5 lbs. | 3A-40B:C | Monoammonium Phosphate Dry Chemical | with bracket | Yes | Yes |
| 40763 | 2-1/2 lbs. | 1A-10B:C | Monoammonium Phosphate Dry Chemical | with bracket | No | Yes |
| 40760 | 2-3/4 lbs. | 10B:C | Sodium Bicarbonate Dry Chemical | with bracket | No | Yes |
| 40762 | 2 lbs. | 5B:C | Sodium Bicarbonate Dry Chemical | with bracket | No | Yes |

Type A-B-C extinguishers fight flammable liquid, electrical, wood, paper and cloth fires. The Tri-class dry chemical (monoammonium phosphate) is a non-toxic agent which extinguishes flames in seconds. It is effective against Class A, B and C fires.

Class 5B:C and 10B:C fights electrical, oil, gas and flammable liquid fires.

*All fire extinguishers meet the following approvals and listings:

DOT, when used with approved vehicle mounting bracket

OSHA and the BMC (Bureau of Motor Carrier Safety Regs. Pat. 39.95)

USCG when used with approved mounting bracket

| | |
|----------------|----------------------------|
| CLASS A | Normal Combustibles |
| CLASS B | Flammable Liquids |
| CLASS C | Electrical |

Fire Extinguishers

Effective against grease, gasoline, electrical, wood and paper fires. Includes wall mounting bracket. A-B-C class fire extinguishers. Six year limited warranty. Type A-B-C extinguishers fight flammable liquid, electrical, wood, paper and cloth fires. The Tri-class dry chemical (monoammonium phosphate) is a non-toxic agent which extinguishes flames in seconds. It is effective against Class A, B and C fires. Class 5B:C and 10B:C fights electrical, oil, gas and flammable liquid fires. All fire extinguishers meet the following approvals and listings: DOT, when used with approved vehicle mounting bracket OSHA and the BMC (Bureau of Motor Carrier Safety Regs. Pat. 39.95) USCG when used with approved mounting bracket.

- CPF 40750 Fire Extinguisher, 10 lbs., 4A-60B:C
- CPF 40751 Fire Extinguisher, 20 lbs., 10A-80B:C
- CPF 40752 Fire Extinguisher, 5 lbs., 3A-40B:C
- CPF 40760 Fire Extinguisher, 2-3/4 lbs., 10B:C
- CPF 40763 Fire Extinguisher, 2-1/2 lbs., 1A-10B:C
- CPF 40762 Fire Extinguisher, 2 lbs., 5B:C

Fire Extinguisher Mounting Brackets

All metal vehicle mounting brackets. Should be used in areas of rough vibration.

- CPF 40770 For use with CPF 40760, 40762 and 40763
- CPF 40771 For use with CPF 40752
- CPF 40772 For use with CPF 40751
- CPF 40773 For use with CPF 40750



Non-Commercial Warning Alarm

Suitable for non-commercial vehicles only. Does not conform with SAE J994 criteria for back-up alarms. Can be used for manlifts, engine over temp., low pressure, outrigger deployment, boom pivot, and gen-set malfunction. 12 voltage and has a 97 dB rating. Operational extreme temperature range: -40°F to +165°F (-40°C to +74°C).

- CPF 40193 Non-Commercial Warning Alarm



Heavy-Duty Back-Up Alarm

Alarm is designed for off-road heavy noise applications. Automatically varies from 87 to 112 dB to maintain a minimum of 5 dB above the ambient noise around it. Alarm is made with reinforced nylon housing and will not rust, dent, chip or easily break. Reduces complaints concerning excess noise. Extra strong housing for heavy-duty applications. Alarm is steam cleanable, polarity protected, and easy to install. Operational extreme temperature range: -40° F to +185° F (-40° C to +85° C).

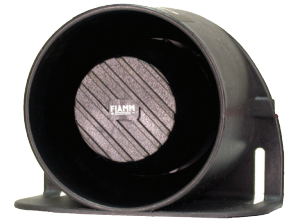
CPF 40188 Heavy-Duty Back-Up Alarm



Medium-Duty Back-Up Alarm

Alarm automatically adjusts from 82 to 107 dB to maintain a minimum of 5dB above the ambient noise around it. Alarm is designed for medium noise rubber tired equipment. Alarm is made with reinforced nylon housing and will not rust, dent, chip or easily break. Reduces excess noise in the work area. Alarm is steam cleanable, polarity protected, and easy to install. Operational extreme temperature range: -40° F to +185° F (-40° C to +85° C).

CPF 40189 Medium-Duty Back-Up Alarm



Light/Medium-Duty Back-Up Alarm

Alarm has the ability to be on 97 dB or 107 dB by reversing the wire hook up. Made with reinforced nylon housing and will not rust, dent, chip or easily break. Alarm is steam cleanable, polarity protected, and easy to install. Operational extreme temperature range: -40° F to +185° F (-40° C to +85° C).

CPF 40192 Light/Medium-Duty Back-Up Alarm



Light-Duty Back-Up Alarm

Designed for years of rugged dependability. Made with reinforced nylon that will not rust, dent, chip or easily break. 12-24 voltage has an SAE rating of B and 107 dB rating. Alarm is compact in size, steam cleanable, polarity protected, and easy to install. Operational extreme temperature range: -40° F to +185° F (-40° C to +85° C).

CPF 40191 Light-Duty Back-Up Alarm



Light-Duty Back-Up Alarm

Alarm is designed for over the road light noise usage. Reinforced nylon housing allows years of rugged dependability, and will not rust, dent, chip or easily break. Alarm is compact in size, steam cleanable, polarity protected, and easy-to-install. 12-24 voltage has an SAE rating of C and 97 dB rating. Operational extreme temperature range: -40° F to +185° F (-40° C to +85° C).

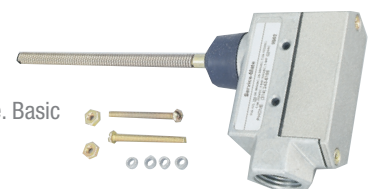
CPF 40190 Light-Duty Back-Up Alarm



Back-Up Alarm Activating Switch

Designed for easy installation and to be actuated by gear shift linkage when vehicle is shifted into reverse. This switch is rated for NEMA 1 and when installed properly is water and dust resistant. 15 Amp rated and may be actuated from a full 360° direction. Switches should be mounted on a flat rigid surface. Basic switch is UL and CSA approved.

CPF 40155 Back-Up Alarm Activating Switch





Safety & Emergency

Safety Flares - First Aid Kits



30 Minute Orion® Red Safety Flares

Orion Safety Flares have the unique patented PlasTcaps™ with the Non-Roll feature, ignite easily and continue to burn in all kinds of weather. Easy strike flares last 30 minutes. No spike or stand.

CPM 0730 30 Minute Red Safety Flares, 36 per case

Red Safety Flares

For those times when you need high visibility for safety. Easy strike flares last 15 minutes. Can be seen up to four miles away. Comes with cardboard stand. Stand makes flares more visible and keeps flares from rolling.

CPS 82880 Red Safety Flares, 3 per pack



Slow Moving Vehicle Sign

These 16" x 14" signs provide a warning that it is on a slow moving vehicle. Available in vinyl, aluminum or high visibility aluminum signs.

CPM TA-1 Slow Moving Vehicle Sign, Aluminum

CPM TA-5 Slow Moving Vehicle Sign, High Visibility Aluminum

CPM TD-2 Slow Moving Vehicle Sign, Vinyl



Pro Series Revolving Signal Lights

Magnetic base holds light tightly to roof of vehicle. Removes easily for storage when not in use. Comes with attached cord to plug into cigarette lighter – 12 volt connection. Check with your local and state laws for use approval.



CPR 72013 Pro Series Revolving Signal Light, Amber

CPR 72014 Pro Series Revolving Signal Light, Red

CPR 72015 Pro Series Revolving Signal Light, Blue

Revolving Signal Light

Strong magnetic base holds dome shape light to roof of vehicle. Easily removable for internal storage when not in use. Comes with removable cord to plug into cigarette lighter – 12 Volt connection. Check with your local and state laws for use approval.



CPR 72011 Revolving Signal Light, Red

CPR 72010 Revolving Signal Light, Amber

CPR 72012 Revolving Signal Light, Blue



Redi-Medic #1, Series 2 First Aid Kit

Fast, easy aid for those unplanned cuts, scrapes and stings. This 79 piece kit meets ANSI and OSHA specifications. The 7-3/4" x 3" x 4-3/4" silver storage case is made of water-resistant nylon with a woven handle and zipper closure.

Contains:

- | | |
|-------------------------------------|------------------------------------|
| 1 - Water Resistant Nylon Container | 1 - 1/2" Roll of Adhesive Tape |
| 1 - 3" Kit Tweezers | 1 - 6" First Aid Scissors |
| 2 - Fingertip Bandages | 1 - 2" x 5 yd Conform Gauze Roll |
| 1 - Pair of Vinyl Gloves | 1 - 17" x 24" Multi-Purpose Pad |
| 6 - 2" x 2" Sterile Gauze Pads | 6 - Sting Stop Swabs |
| 1 - 4" Sterile Pressure Bandage | 2 - 5" x 9" Sterile Abdominal Pads |
| 6 - Safety Pins | 20 - Band-aids (3/4" x 3") |
| 6 - Wet Wipes | 10 - Alcohol Swabs |
| 4 - 4" x 4" Sterile Gauze Pads | 4 - Antiseptic Swabs |
| 1 - First Aid Booklet | 1 - Triangular Bandage |
| 2 - Knuckle Band-aids | 1 - 60 mL Antiseptic Soap |

CPF 40226 Redi-Medic #1, Series 2 First Aid Kit

Redi-Medic Mini, Series 2 First Aid Kit

A handy, 56 piece kit to keep in the shop for those small unexpected accidents. The 5-3/4" x 2-1/4" x 5" white storage case is made of water-resistant nylon with a woven handle and zipper closure.

Contains:

- | | |
|-------------------------------------|---|
| 1 - Water Resistant Nylon Container | 1 - Acetaminophen (Pain Reliever - 2 pills) |
| 1 - 3" Kit Tweezers | 6 - Safety Pins |
| 1 - Triangular Bandage | 2 - Antiseptic Swabs |
| 2 - Sting Stop Swabs | 1 - 4" Kit Scissors |
| 4 - 2" x 2" Sterile Gauze Pads | 1 - 2" x 5 yd Conform Gauze Roll |
| 1 - 2" Sterile Pressure Bandage | 4 - Wet Wipes |
| 4 - Alcohol Swabs | 1 - 60 mL Antiseptic Soap |
| 2 - 4" x 4" Sterile Gauze Pads | 1 - 5" x 9" Sterile Abdominal Pad |
| 1 - First Aid Booklet | 20 - Band-aids (3/4" x 3") |
| 1 - 1/2" Roll of Adhesive Tape | 1 - Pair of Vinyl Gloves |

CPF 40225 Redi-Medic Mini, Series 2 First Aid Kit

Survival Kit

Action preparedness kit. 60 items. Includes access to online training videos explaining use of contents of the kit. Size: 9-1/2" L x 5-1/2" W x 5" H, Weight: 5.5 lbs.

Contains:

- | | |
|--|----------------------------------|
| 1 - Nylon Case | 2 - Heavy-Duty "D" Batteries |
| 1 - Dust Mask | 1 - Roll of Duct Tape |
| 1 - 2400 Calorie Food Package (6 bars) | 1 - First Aid Card |
| 1 - 2' x 5' yd Gauze Roll | 5 - Antiseptic Swabs |
| 1 - Emergency Rescue Blanket | 1 - 30 hr Survival Candle in Tin |
| 4 - Lightsticks | 1 - Six Function Knife |
| 6 - Packets of Water | 12 - Plastic Bandages |
| 6 - Alcohol Swabs | 4 - Pain Relief Tablets |
| 1 - Flashlight | 1 - Box of Matches |
| 1 - Rain Poncho | 1 - Whistle |
| 1 - Disposable Bag/Safety Vest | 2 - 3" x 3" Sterile Gauze Pads |
| 5 - Wet Wipes | |

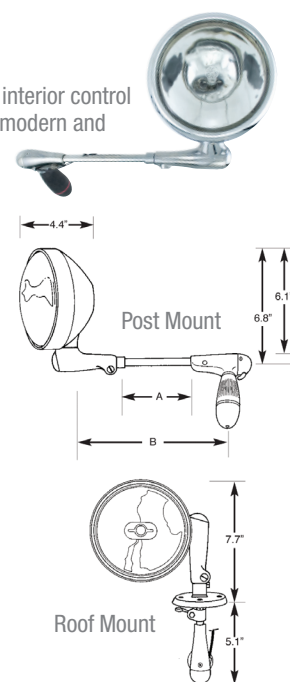


CPF 42209 Survival Kit

THE BEAM® 6" Round Spotlights

THE BEAM® spotlights offer the convenience and safety of instant aimable light when and where you want it. The interior control handle with fingertip switch provides 360° continuous horizontal rotation. They are designed to compliment both modern and classic vehicles, provide long service life and simplify bulb changes.

| MFG | Spotlight PN | Size & Type | Shaft Length | | Verticle Adj. | Finish | Volts | Watts | Candle Power | Lamp Life |
|---|--------------|----------------------|--------------|---------|---------------|--------|-------|-------|--------------|-----------|
| 325 Post-Mount Series | | | | | | | | | | |
| CPM | 325H | 6" Round | 5-7/8" | 11-3/8" | 120° | Chrome | 12V | 50W | 160,000 | 100 Hours |
| CPM | 325A | 6" Round | 6-1/2" | 12" | 120° | Chrome | 12V | 50W | 160,000 | 100 Hours |
| CPM | 325V | 6" Round | 7-1/2" | 13" | 120° | Chrome | 12V | 50W | 160,000 | 100 Hours |
| CPM | 325GM | 6" Round | 9" | 14-1/2" | 120° | Chrome | 12V | 50W | 160,000 | 100 Hours |
| CPM | 325C | 6" Round | 10-5/8" | 15-1/2" | 120° | Chrome | 12V | 50W | 160,000 | 100 Hours |
| 330 Post-Mount Series with H3 Bulb for 2008-92 Crown Victoria | | | | | | | | | | |
| CPM | 94014-0002 | 6" Round Driver Side | - | - | 120° | Black | 12V | 100W | 245,000 | 100 Hours |
| CPM | 94015-0002 | 6" Round Pass. Side | - | - | 120° | Black | 12V | 100W | 245,000 | 100 Hours |
| Rooflight Series | | | | | | | | | | |
| CPM | 375 | 6" Round | 5.1" | 7.7" | 180° | Chrome | 12V | 50W | 160,000 | 100 Hours |



Installation Kits

THE BEAM® spotlights can easily be installed by following the complete illustrated instructions included with each of these installation kits. RH (Passenger Side) is available by special order only.

- | | |
|----------|--------------------------------------|
| CPM 184 | Installation Kit |
| CPM 189 | Installation Kit |
| CPM 229 | Installation Kit |
| CPM 27 | Installation Kit |
| CPM 5556 | LH (Drivers Side) Installation Kit |
| CPM 5557 | RH (Passenger Side) Installation Kit |



EYE BEAM® Spotlight Retrofit Kit

The new EYE BEAM™ spotlight and supplemental officer warning system is designed to maximize traffic stop safety by alerting the officer with a powerful 108 dB alarm when its target moves. EYE BEAM™ can be easily installed as retrofit upgrades to existing THE BEAM® post mounted spotlights.

CPM EB1000 EYE BEAM® Spotlight Retrofit Kit



> For application info, please visit <http://www.unityusa.com>.





GET ALL THE BRAKES!

NAO, semi-metallic, ceramic, regular duty, extreme service, pads, shoes, hardware, drums, rotors, calipers, master cylinders, fluid, import, domestic, passenger car, truck, fleet, expert advice, trusted quality, professional service. You can stop now.

When you rely on CARQUEST Auto Parts, you'll find all your brake needs in one location.

Get all the brakes at CARQUEST. Asian, Domestic or European.

Great people, great products, great prices!SM

